

Human CUL5 Knockdown Cell Line (WB-Validated)



Catalog #: C65564

Aliases

CUL5; Cullin 5; VACM-1; Vasopressin-Activated Calcium-Mobilizing Receptor 1; Cullin-5; CUL-5; VACM1; Cullin-5 (Vasopressin-Activated Calcium-Mobilizing Receptor-1); Vasopressin-Activated Calcium-Mobilizing Receptor-1

Background

Gene Name: CUL5

NCBI Gene Entry: [8065](#)

Storage

Store at liquid nitrogen for 1 year.

Kit Components

1. Human CUL5 Knockdown Cell Line (Wb-Validated)
2. Wild-type cell line

Parental Cell Line

Human cell line supplied by the client

Validation Methods

RT-qPCR, Western blotting (WB)

Shipping

Shipped on Dry Ice.

Instructions For Use

This knockdown cell line should be paired with wild-type cell line for use.

Note: This product is for research use only.

Validation Data

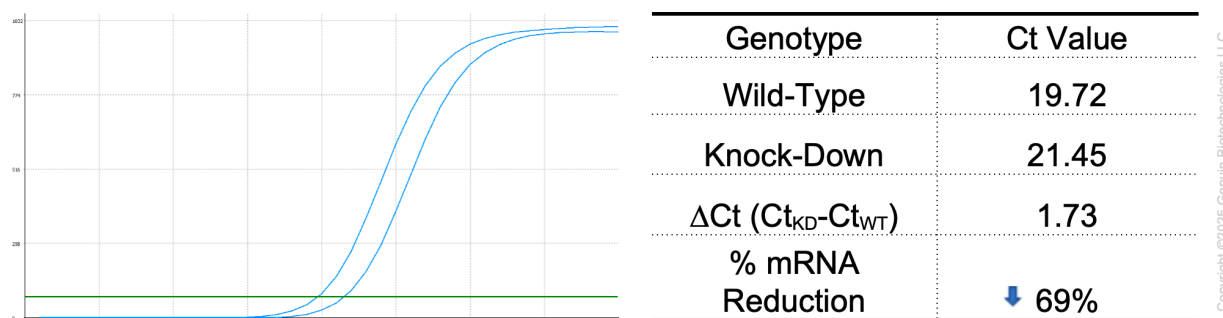
SUPPORT

SUPPORT@GENUINBIOTECH.COM
TEL: +1-540-855-7041

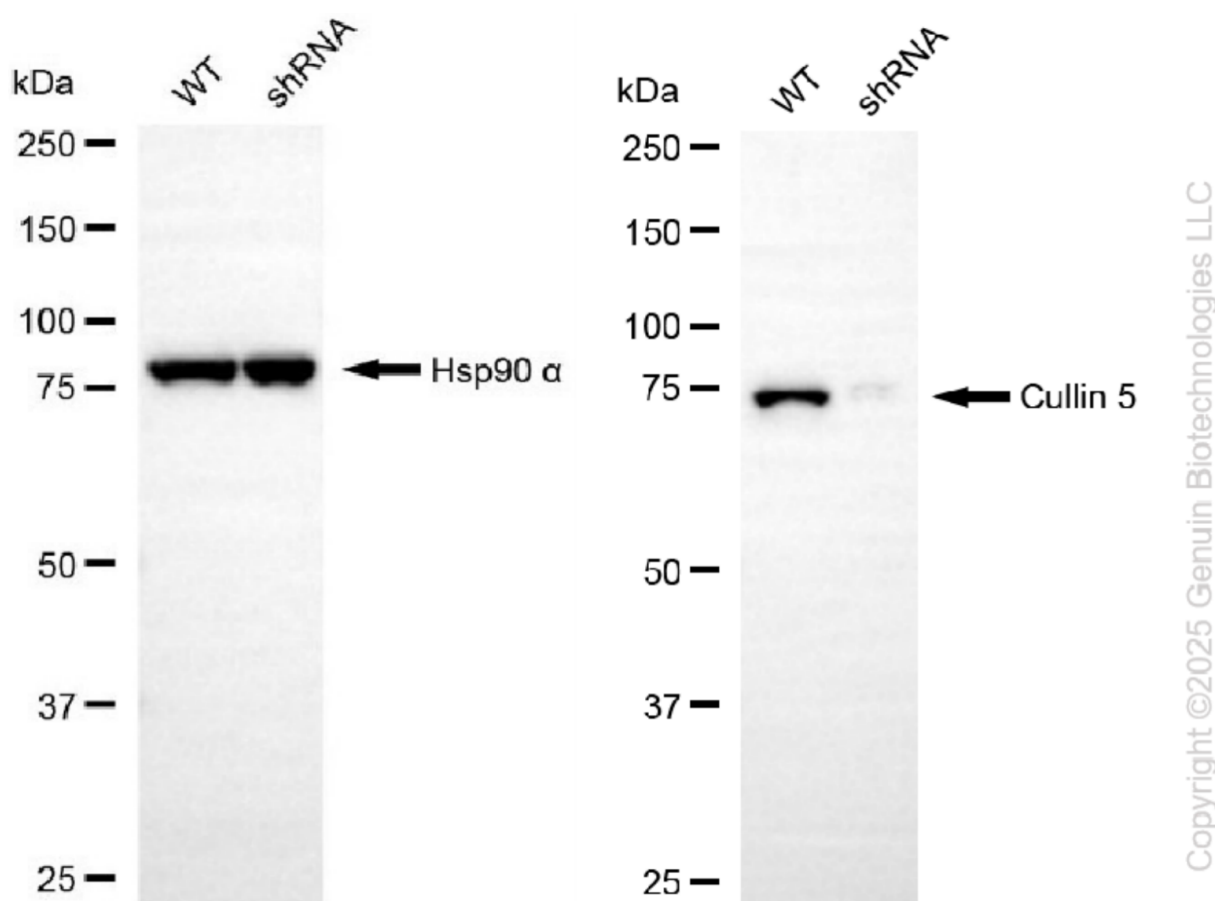
ORDERS

SALES@GENUINBIOTECH.COM
FAX: +1-540-855-7041

WWW.GENUINBIOTECH.COM



RT-qPCR analysis. 293T cells were infected with CUL5-specific shRNA lentiviral particles, total RNA was extracted from wild-type and knockdown cells, RT-qPCR was performed using gene-specific primers. $\Delta Ct (Ct_{KD} - Ct_{WT})$ was used to calculate mRNA reduction (%) between wild-type and knockdown cells using the following formula: $(1 - 1/2^{\Delta Ct}) \times 100\%$.



Western blotting analysis. CUL5 protein expression in wild-type (WT) and shRNA knockdown (KD) 293T cells was detected using Western blotting. Hsp90 α served as a loading control. The blots were incubated with primary antibodies against CUL5 and Hsp90 α, respectively, followed by incubating with HRP-conjugated goat anti-rabbit secondary antibody. Images were developed using NaQ™ ECL Substrate Kit.