

Human NUDT9 Knockdown Cell Line (WB-Validated)



Catalog #: C65587

Aliases

NUDT9; Nudix Hydrolase 9; Nudix (Nucleoside Diphosphate Linked Moiety X)-Type Motif 9; ADP-Ribose Pyrophosphatase, Mitochondrial; Adenosine Diphosphoribose Pyrophosphatase; ADP-Ribose Phosphohydrolase; ADP-Ribose Diphosphatase; ADPR-PPase; MGC3037; NUDT10; Nucleoside Diphosphate Linked Moiety X-Type Motif 9; Nucleoside Diphosphate-Linked Moiety X Motif 9; ADP-Ribose Pyrophosphatase NUDT9; Nudix Motif 9; EC 3.6.1.13

Background

Gene Name: NUDT9

NCBI Gene Entry: [53343](#)

Storage

Store at liquid nitrogen for 1 year.

Kit Components

1. Human NUDT9 Knockdown Cell Line (Wb-Validated)
2. Wild-type cell line

Parental Cell Line

Human cell line supplied by the client

Validation Methods

RT-qPCR, Western blotting (WB)

Shipping

Shipped on Dry Ice.

Instructions For Use

This knockdown cell line should be paired with wild-type cell line for use.

Note: This product is for research use only.

Validation Data

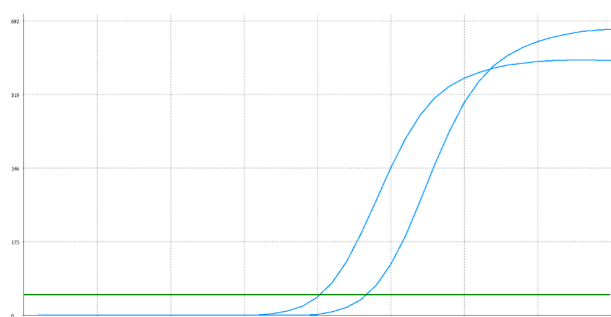
SUPPORT

SUPPORT@GENUINBIOTECH.COM
TEL: +1-540-855-7041

ORDERS

SALES@GENUINBIOTECH.COM
FAX: +1-540-855-7041

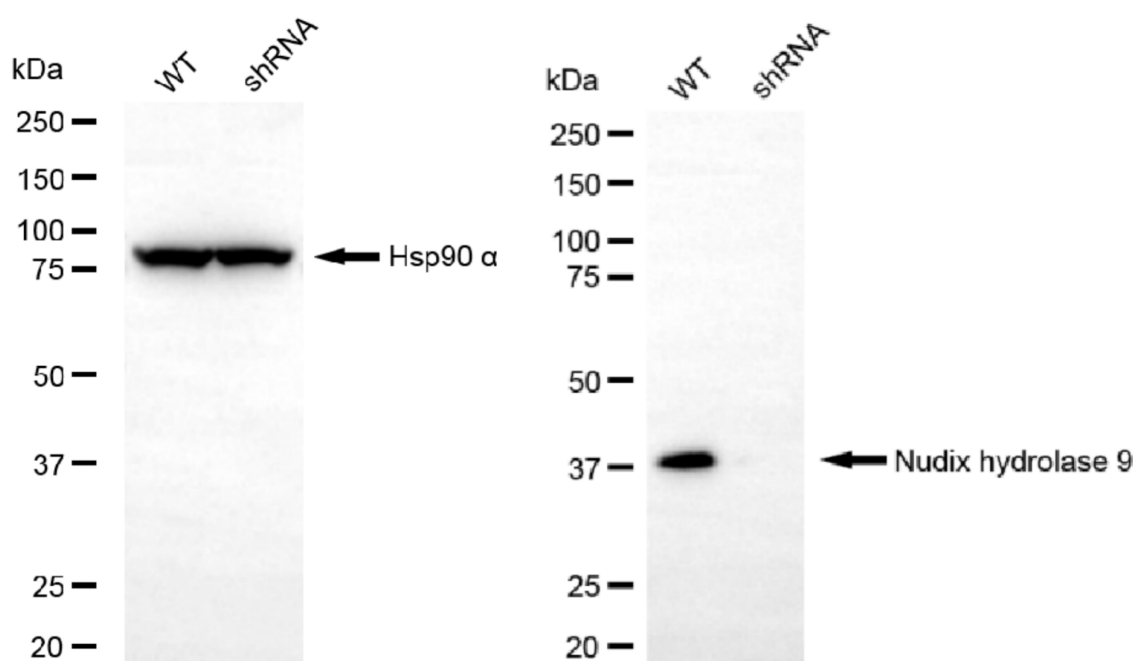
WWW.GENUINBIOTECH.COM



Genotype	Ct Value
Wild-Type	19.99
Knock-Down	23.31
$\Delta Ct (Ct_{KD} - Ct_{WT})$	3.32
% mRNA Reduction	↓ 90%

Copyright ©2025 Genuin Biotechnologies LLC

RT-qPCR analysis. HeLa cells were infected with NUDT9-specific shRNA lentiviral particles, total RNA was extracted from wild-type and knockdown cells, RT-qPCR was performed using gene-specific primers. $\Delta Ct (Ct_{KD} - Ct_{WT})$ was used to calculate mRNA reduction (%) between wild-type and knockdown cells using the following formula: $(1 - 1/2^{\Delta Ct}) \times 100\%$.



Copyright ©2025 Genuin Biotechnologies LLC

Western blotting analysis. NUDT9 protein expression in wild-type (WT) and shRNA knockdown (KD) HeLa cells was detected using Western blotting. Hsp90 α served as a loading control. The blots were incubated with primary antibodies against NUDT9 and Hsp90 α , respectively, followed by incubating with HRP-conjugated goat anti-rabbit secondary antibody. Images were developed using NaQ™ ECL Substrate Kit.