

Human SEPTIN7 Knockdown Cell Line (WB-Validated)



Catalog #: C65602

Aliases

SEPTIN7; Septin 7; Septin-7; SEPT7A; CDC10; SEPT7; CDC3; CDC10 Protein Homolog; CDC10 (Cell Division Cycle 10, S. Cerevisiae, Homolog); CDC10 Cell Division Cycle 10 Homolog (S. Cerevisiae); NBLA02942

Background

Gene Name: SEPTIN7

NCBI Gene Entry: [989](#)

Storage

Store at liquid nitrogen for 1 year.

Kit Components

1. Human SEPTIN7 Knockdown Cell Line (Wb-Validated)
2. Wild-type cell line

Parental Cell Line

Human cell line supplied by the client

Validation Methods

RT-qPCR, Western blotting (WB)

Shipping

Shipped on Dry Ice.

Instructions For Use

This knockdown cell line should be paired with wild-type cell line for use.

Note: This product is for research use only.

Validation Data

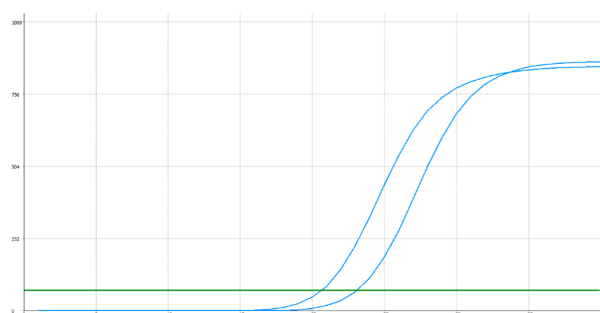
SUPPORT

SUPPORT@GENUINBIOTECH.COM
TEL: +1-540-855-7041

ORDERS

SALES@GENUINBIOTECH.COM
FAX: +1-540-855-7041

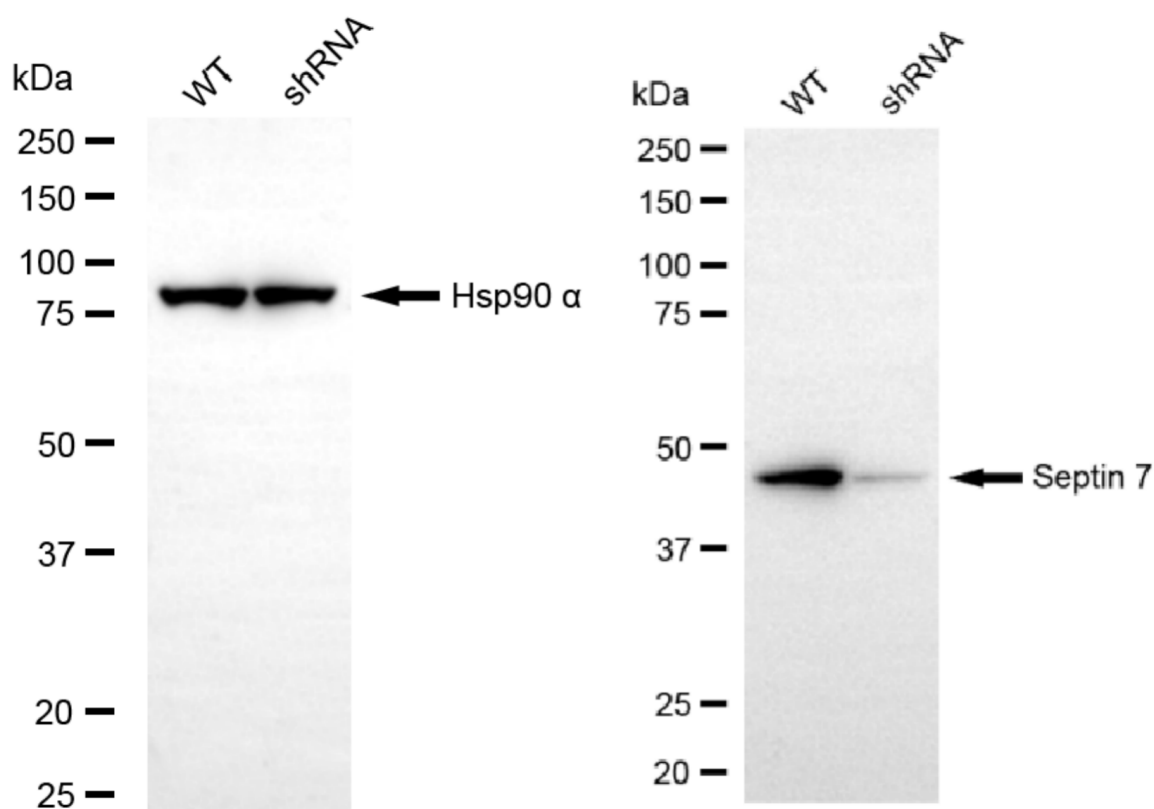
WWW.GENUINBIOTECH.COM



Genotype	Ct Value
Wild-Type	20.35
Knock-Down	22.86
$\Delta Ct (Ct_{KD}-Ct_{WT})$	2.51
% mRNA Reduction	↓ 82%

Copyright ©2025 Genuin Biotechnologies LLC

RT-qPCR analysis. HeLa cells were infected with SEPTIN7-specific shRNA lentiviral particles, total RNA was extracted from wild-type and knockdown cells, RT-qPCR was performed using gene-specific primers. $\Delta Ct (Ct_{KD}-Ct_{WT})$ was used to calculate mRNA reduction (%) between wild-type and knockdown cells using the following formula: $(1-1/2^{\Delta Ct}) \times 100\%$.



Copyright ©2025 Genuin Biotechnologies LLC

Western blotting analysis. SEPTIN7 protein expression in wild-type (WT) and shRNA knockdown (KD) HeLa cells was detected using Western blotting. Hsp90 α served as a loading control. The blots were incubated with primary antibodies against SEPTIN7 and Hsp90 α , respectively, followed by incubating with HRP-conjugated goat anti-rabbit secondary antibody. Images were developed using NaQ™ ECL Substrate Kit.