

Human TEAD4 Knockdown Cell Line (WB-Validated)



Catalog #: C65612

Aliases

TEAD4; TEA Domain Transcription Factor 4; TEA Domain Family Member 4; TCF13L1; TEFR-1; EFTR-2; TEF-3; Transcriptional Enhancer Factor TEF-3; Transcriptional Enhancer Factor 3; Transcription Factor 13-Like 1; Transcription Factor RTEF-1; RTEF-1; RTEF1; TEF3; Transcriptional Enhancer Factor 1-Related; Related Transcription Enhancer Factor 1B; HRTEF-1B; TEAD-4

Background

Gene Name: TEAD4
NCBI Gene Entry: [7004](#)

Storage

Store at liquid nitrogen for 1 year.

Kit Components

1. Human TEAD4 Knockdown Cell Line (Wb-Validated)
2. Wild-type cell line

Parental Cell Line

Human cell line supplied by the client

Validation Methods

RT-qPCR, Western blotting (WB)

Shipping

Shipped on Dry Ice.

Instructions For Use

This knockdown cell line should be paired with wild-type cell line for use.

Note: This product is for research use only.

Validation Data

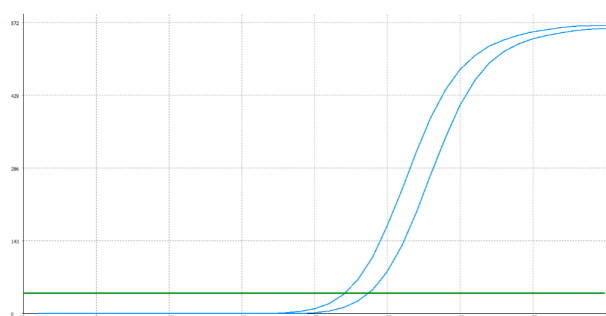
SUPPORT

SUPPORT@GENUINBIOTECH.COM
TEL: +1-540-855-7041

ORDERS

SALES@GENUINBIOTECH.COM
FAX: +1-540-855-7041

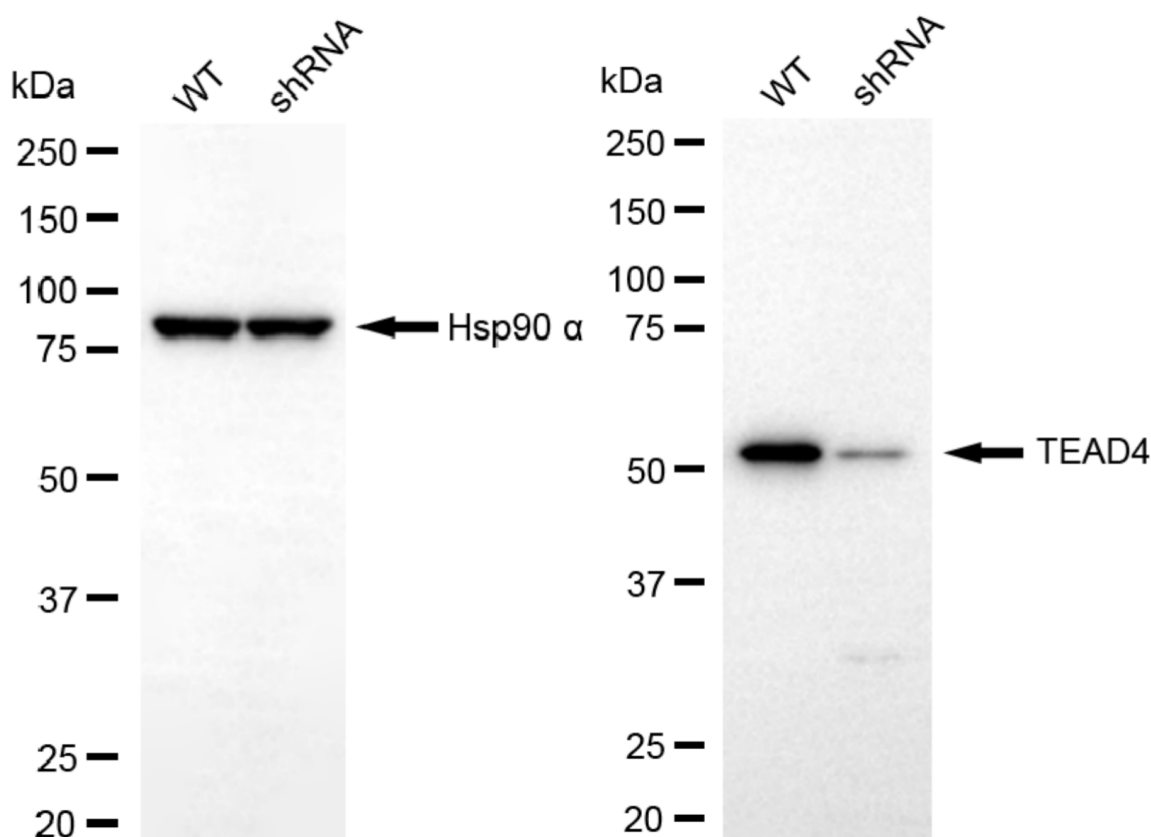
WWW.GENUINBIOTECH.COM



Genotype	Ct Value
Wild-Type	22.09
Knock-Down	23.67
$\Delta Ct (Ct_{KD} - Ct_{WT})$	1.58
% mRNA Reduction	↓ 67%

Copyright ©2025 Genuin Biotechnologies LLC

RT-qPCR analysis. HepG2 cells were infected with TEAD4-specific shRNA lentiviral particles, total RNA was extracted from wild-type and knockdown cells, RT-qPCR was performed using gene-specific primers. $\Delta Ct (Ct_{KD} - Ct_{WT})$ was used to calculate mRNA reduction (%) between wild-type and knockdown cells using the following formula: $(1 - 1/2^{\Delta Ct}) \times 100\%$.



Copyright ©2025 Genuin Biotechnologies LLC

Western blotting analysis. TEAD4 protein expression in wild-type (WT) and shRNA knockdown (KD) HepG2 cells was detected using Western blotting. Hsp90 α served as a loading control. The blots were incubated with primary antibodies against TEAD4 and Hsp90 α , respectively, followed by incubating with HRP-conjugated goat anti-rabbit secondary antibody. Images were developed using NaQ™ ECL Substrate Kit.