

Human PRKCA Knockdown Cell Line (WB-Validated)



Catalog #: C65641

Aliases

PRKCA; Protein Kinase C Alpha; PKCA; Protein Kinase C Alpha Type; EC 2.7.11.13; PKC-Alpha; PRKACA; PKC-A; Protein Kinase C, Alpha; Aging-Associated Gene 6; EC 2.7.11; PKCalpha; PKCI+/-; PKC α ; AAG6

Background

Gene Name: PRKCA

NCBI Gene Entry: [5578](#)

Storage

Store at liquid nitrogen for 1 year.

Kit Components

1. Human PRKCA Knockdown Cell Line (Wb-Validated)
2. Wild-type cell line

Parental Cell Line

Human cell line supplied by the client

Validation Methods

RT-qPCR, Western blotting (WB)

Shipping

Shipped on Dry Ice.

Instructions For Use

This knockdown cell line should be paired with wild-type cell line for use.

Note: This product is for research use only.

Validation Data

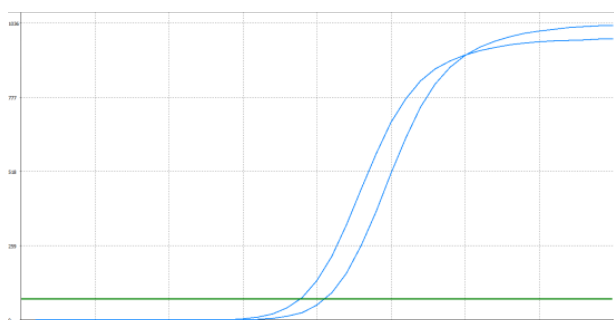
SUPPORT

SUPPORT@GENUINBIOTECH.COM
TEL: +1-540-855-7041

ORDERS

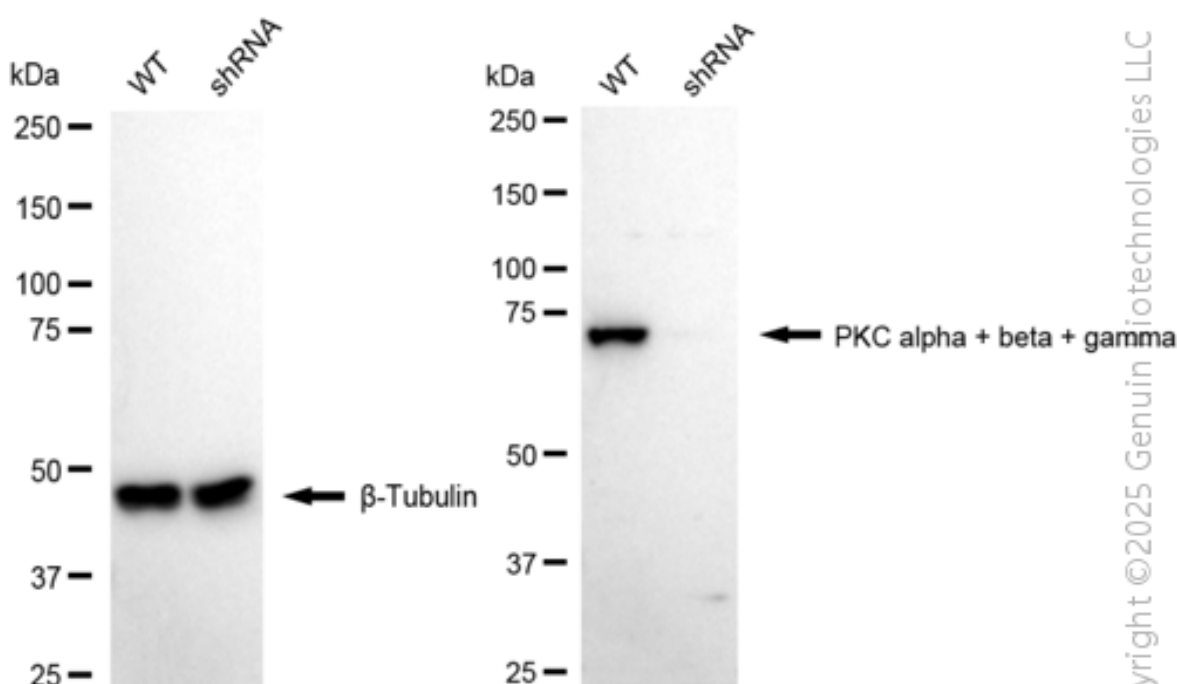
SALES@GENUINBIOTECH.COM
FAX: +1-540-855-7041

WWW.GENUINBIOTECH.COM



Genotype	Ct Value
Wild-Type	18.76
Knock-Down	20.50
Δ Ct (CtKD-CtWT)	1.74
% mRNA Reduction	70%

RT-qPCR analysis. HT-1080 cells were infected with PRKCA-specific shRNA lentiviral particles, total RNA was extracted from wild-type and knockdown cells, RT-qPCR was performed using gene-specific primers. Δ Ct (CtKD-CtWT) was used to calculate mRNA reduction (%) between wild-type and knockdown cells using the following formula: $(1 - 1/2^{\Delta\text{Ct}}) \times 100\%$.



Western blotting analysis. PRKCA protein expression in wild-type (WT) and shRNA knockdown (KD) HT-1080 cells was detected using Western blotting. β -Tubulin served as a loading control. The blots were incubated with primary antibodies against PRKCA and β -Tubulin, respectively, followed by incubating with HRP-conjugated goat anti-rabbit secondary antibody. Images were developed using FeQ™ ECL Substrate Kit.

