

Human MRPS18B Knockdown Cell Line (WB-Validated)



Catalog #: C65651

Aliases

MRPS18B; Mitochondrial Ribosomal Protein S18B; C6orf14; MRPS18-2; HSPC183; PTD017; MS40; 28S Ribosomal Protein S18-2, Mitochondrial; 28S Ribosomal Protein S18b, Mitochondrial; Small Ribosomal Subunit Protein BS18b; Small Ribosomal Subunit Protein MS40; MRP-S18-2; MRP-S18-B; Mrps18-B; S18mt-B; Mitochondrial Small Ribosomal Subunit Protein BS18m-B; Mitochondrial Small Ribosomal Subunit Protein BS18b; Mitochondrial Small Ribosomal Subunit Protein MS40; Mitochondrial Ribosomal Protein S18-2; HumanS18a; S18amt

Background

Gene Name: MRPS18B

NCBI Gene Entry: [28973](#)

Storage

Store at liquid nitrogen for 1 year.

Kit Components

1. Human MRPS18B Knockdown Cell Line (Wb-Validated)
2. Wild-type cell line

Parental Cell Line

Human cell line supplied by the client

Validation Methods

RT-qPCR, Western blotting (WB)

Shipping

Shipped on Dry Ice.

Instructions For Use

This knockdown cell line should be paired with wild-type cell line for use.

Note: This product is for research use only.

Validation Data

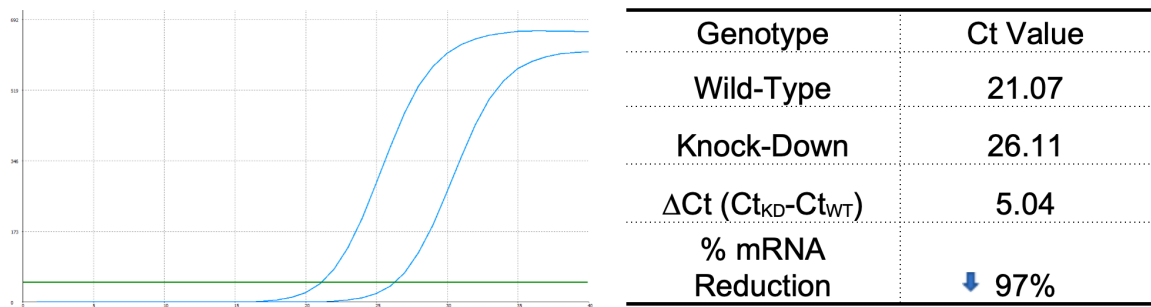
SUPPORT

SUPPORT@GENUINBIOTECH.COM
TEL: +1-540-855-7041

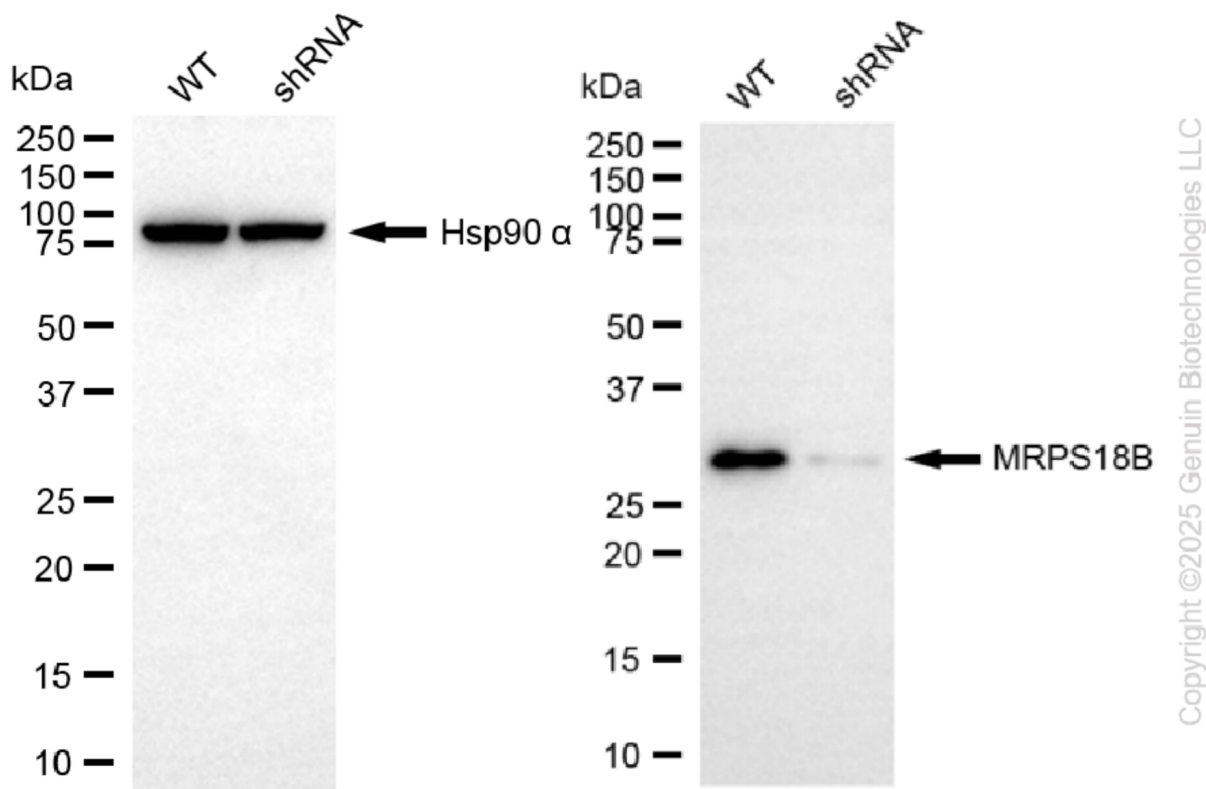
ORDERS

SALES@GENUINBIOTECH.COM
FAX: +1-540-855-7041

WWW.GENUINBIOTECH.COM



RT-qPCR analysis. HeLa cells were infected with MRPS18B-specific shRNA lentiviral particles, total RNA was extracted from wild-type and knockdown cells, RT-qPCR was performed using gene-specific primers. $\Delta Ct (Ct_{KD}-Ct_{WT})$ was used to calculate mRNA reduction (%) between wild-type and knockdown cells using the following formula: $(1-1/2^{\Delta Ct}) \times 100\%$.



Western blotting analysis. MRPS18B protein expression in wild-type (WT) and shRNA knockdown (KD) HeLa cells was detected using Western blotting. Hsp90 α served as a loading control. The blots were incubated with primary antibodies against MRPS18B and Hsp90 α , respectively, followed by incubating with HRP-conjugated goat anti-rabbit secondary antibody. Images were developed using NaQ™ ECL Substrate Kit.