

Human TPX2 Knockdown Cell Line (WB-Validated)



Catalog #: C65663

Aliases

TPX2; TPX2 Microtubule Nucleation Factor; HCA519; DIL-2; P100; Hepatocellular Carcinoma-Associated Antigen 519; Targeting Protein For Xklp2; C20orf1; C20orf2; FLS353; Differentially Expressed In Cancerous And Non-Cancerous Lung Cells 2; Differentially Expressed In Cancerous And Noncancerous Lung Cells 2; Hepatocellular Carcinoma-Associated Antigen 90; Protein Fls353; DIL2; Restricted Expression Proliferation Associated Protein 100; Restricted Expression Proliferation-Associated Protein 100; TPX2, Microtubule-Associated, Homolog (Xenopus Laevis); Preferentially Expressed In Colorectal Cancer; TPX2, Microtubule-Associated Protein Homolog; Differentially Expressed In Lung Cells; TPX2, Microtubule-Associated, Homolog; Chromosome 20 Open Reading Frame 1; TPX2, Microtubule-Associated; GD:C20orf1; REPP86; HCTP4

Background

Gene Name: TPX2

NCBI Gene Entry: [22974](#)

Storage

Store at liquid nitrogen for 1 year.

Kit Components

1. Human TPX2 Knockdown Cell Line (Wb-Validated)
2. Wild-type cell line

Parental Cell Line

Human cell line supplied by the client

Validation Methods

RT-qPCR, Western blotting (WB)

Shipping

Shipped on Dry Ice.

Instructions For Use

This knockdown cell line should be paired with wild-type cell line for use.

SUPPORT

SUPPORT@GENUINBIOTECH.COM
TEL: +1-540-855-7041

ORDERS

SALES@GENUINBIOTECH.COM
FAX: +1-540-855-7041

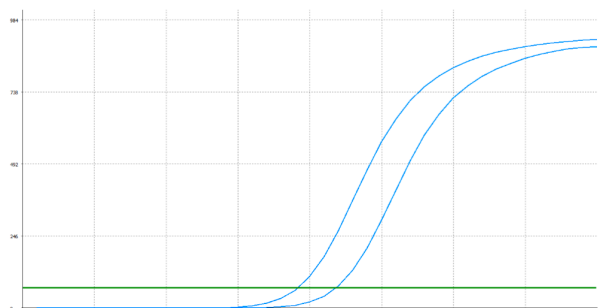
WWW.GENUINBIOTECH.COM

Human TPX2 Knockdown Cell Line (WB-Validated)

PAGE 2

Note: This product is for research use only.

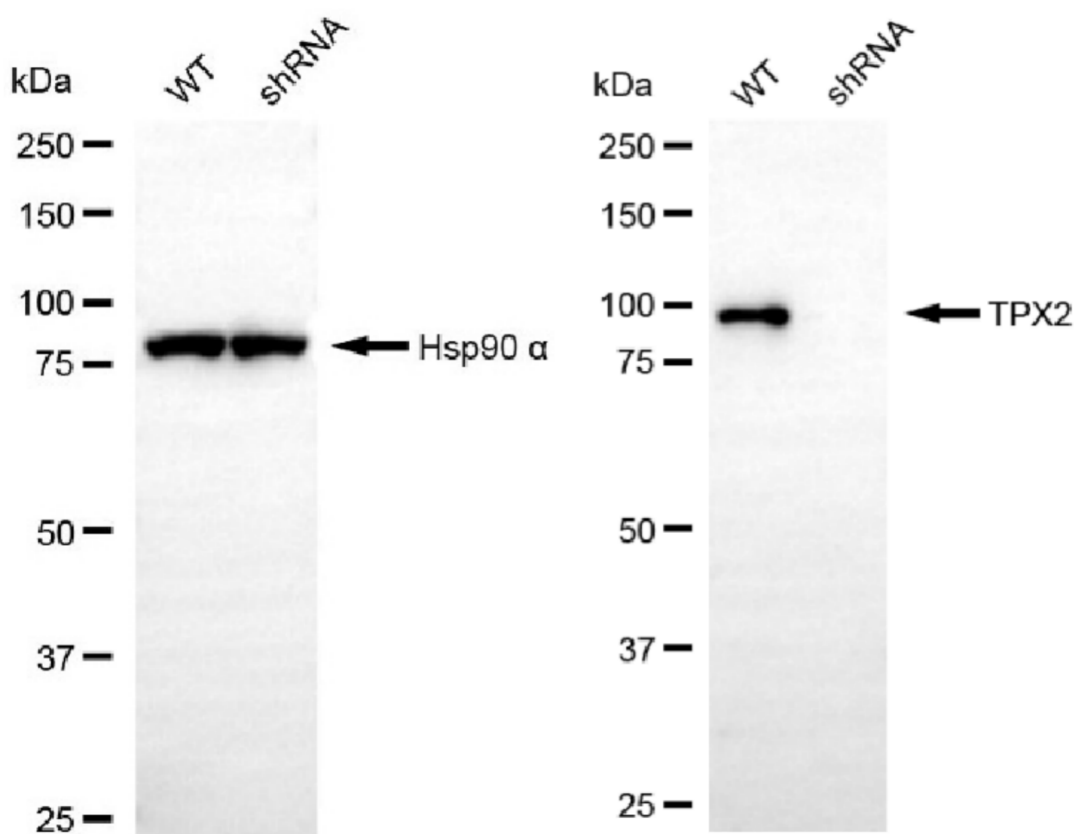
Validation Data



Genotype	Ct Value
Wild-Type	19.09
Knock-Down	21.66
$\Delta Ct (Ct_{KD} - Ct_{WT})$	2.57
% mRNA Reduction	↓ 83%

Copyright ©2025 Genuin Biotechnologies LLC

RT-qPCR analysis. HeLa cells were infected with TPX2-specific shRNA lentiviral particles, total RNA was extracted from wild-type and knockdown cells, RT-qPCR was performed using gene-specific primers. $\Delta Ct (Ct_{KD} - Ct_{WT})$ was used to calculate mRNA reduction (%) between wild-type and knockdown cells using the following formula: $(1 - 1/2^{\Delta Ct}) \times 100\%$.



Copyright ©2025 Genuin Biotechnologies LLC

Western blotting analysis. TPX2 protein expression in wild-type (WT) and shRNA knockdown (KD) HeLa cells was detected using Western blotting. Hsp90 α served as a loading control. The blots were incubated with primary antibodies against TPX2 and Hsp90 α , respectively, followed

SUPPORT

SUPPORT@GENUINBIOTECH.COM
TEL: +1-540-855-7041

ORDERS

SALES@GENUINBIOTECH.COM
FAX: +1-540-855-7041

WWW.GENUINBIOTECH.COM

Human TPX2 Knockdown Cell Line (WB-Validated)

PAGE 3

by incubating with HRP-conjugated goat anti-rabbit secondary antibody. Images were developed using NaQ™ ECL Substrate Kit.

SUPPORT

SUPPORT@GENUINBIOTECH.COM
TEL: +1-540-855-7041

ORDERS

SALES@GENUINBIOTECH.COM
FAX: +1-540-855-7041

WWW.GENUINBIOTECH.COM