

Human JUP Knockdown Cell Line (WB-Validated)



Catalog #: C67172

Aliases

JUP; Junction Plakoglobin; DP3; DPM3; CTNNG; PDGB; PKGB; PG; Catenin (Cadherin-Associated Protein), Gamma 80kDa; Desmosomal Protein 3; Desmoplakin III; Desmoplakin-3; Catenin Gamma

Background

Gene Name: JUP
NCBI Gene Entry: [3728](#)

Storage

Store at liquid nitrogen for 1 year.

Kit Components

1. Human JUP Knockdown Cell Line (Wb-Validated)
2. Wild-type cell line

Parental Cell Line

Human cell line supplied by the client

Validation Methods

RT-qPCR, Western blotting (WB)

Shipping

Shipped on Dry Ice.

Instructions For Use

This knockdown cell line should be paired with wild-type cell line for use.

Note: This product is for research use only.

Validation Data

SUPPORT

SUPPORT@GENUINBIOTECH.COM
TEL: +1-540-855-7041

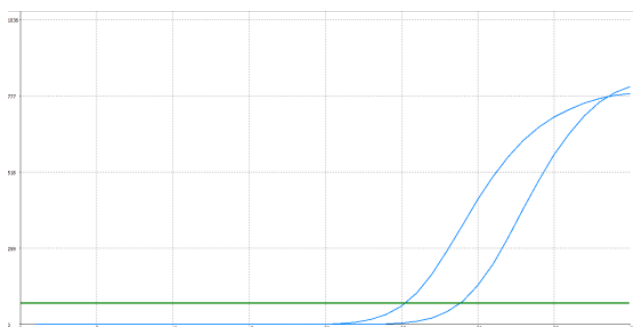
ORDERS

SALES@GENUINBIOTECH.COM
FAX: +1-540-855-7041

WWW.GENUINBIOTECH.COM

Human JUP Knockdown Cell Line (WB-Validated)

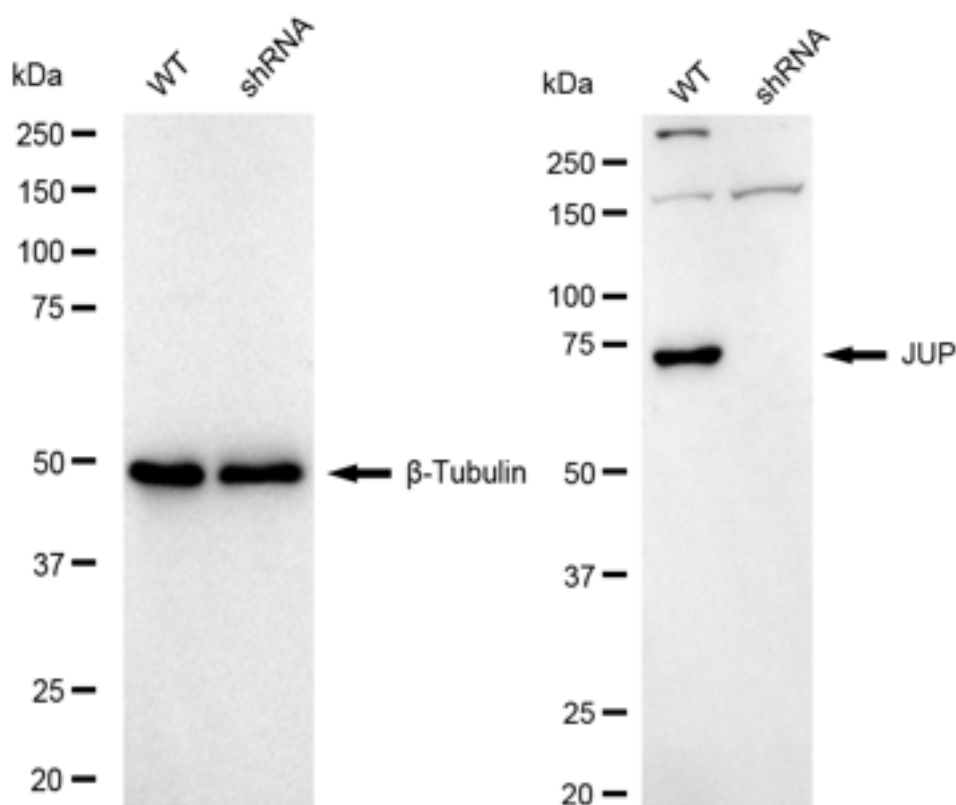
PAGE 2



Genotype	Ct Value
Wild-Type	24.74
Knock-Down	28.40
ΔCt (CtKD-CtWT)	3.66
% mRNA Reduction	92%

Copyright ©2025 Genuin Biotechnologies LLC

RT-qPCR analysis. HeLa cells were infected with JUP-specific shRNA lentiviral particles, total RNA was extracted from wild-type and knockdown cells, RT-qPCR was performed using gene-specific primers. ΔCt (CtKD-CtWT) was used to calculate mRNA reduction (%) between wild-type and knockdown cells using the following formula: $(1 - 1/2^{\Delta Ct}) \times 100\%$.



Copyright ©2025 Genuin Biotechnologies LLC

Western blotting analysis using anti-alpha smooth muscle Actin antibody (Cat#67172). alpha smooth muscle Actin antibody expression in wild type (WT) and alpha smooth muscle Actin antibody shRNA knockdown (KD) HeLa cells with 30 μ g of total cell lysates. β -Tubulin serves as a loading control. The blot was incubated with anti-alpha smooth muscle Actin antibody

SUPPORT

SUPPORT@GENUINBIOTECH.COM
TEL: +1-540-855-7041

ORDERS

SALES@GENUINBIOTECH.COM
FAX: +1-540-855-7041

WWW.GENUINBIOTECH.COM

Human JUP Knockdown Cell Line (WB-Validated)

PAGE 3

(Cat#67172, 1:10,000) and HRP-conjugated goat anti-rabbit secondary antibody (Cat#201, 1:20,000) respectively. Image was developed using FeQ™ ECL Substrate Kit (Cat#226).

SUPPORT

SUPPORT@GENUINBIOTECH.COM
TEL: +1-540-855-7041

ORDERS

SALES@GENUINBIOTECH.COM
FAX: +1-540-855-7041

WWW.GENUINBIOTECH.COM