

Human PRKRA Knockdown Cell Line (WB-Validated)



Catalog #: C68240

Aliases

PRKRA; Protein Activator Of Interferon Induced Protein Kinase EIF2AK2; PACT; RAX; Protein Activator Of The Interferon-Induced Protein Kinase; PKR-Associated Protein X ; HSD14 ; DYT16; Interferon-Inducible Double-Stranded RNA-Dependent Protein Kinase Activator A; Protein Kinase, Interferon-Inducible Double-Stranded RNA-Dependent Activator; PKR-Associating Protein X; Protein Kinase, Interferon-Inducible Double Stranded RNA Dependent Activator

Background

Gene Name: PRKRA

NCBI Gene Entry: [8575](#)

Storage

Store at liquid nitrogen for 1 year.

Kit Components

1. Human PRKRA Knockdown Cell Line (Wb-Validated)
2. Wild-type cell line

Parental Cell Line

Human cell line supplied by the client

Validation Methods

RT-qPCR, Western blotting (WB)

Shipping

Shipped on Dry Ice.

Instructions For Use

This knockdown cell line should be paired with wild-type cell line for use.

Note: This product is for research use only.

Validation Data

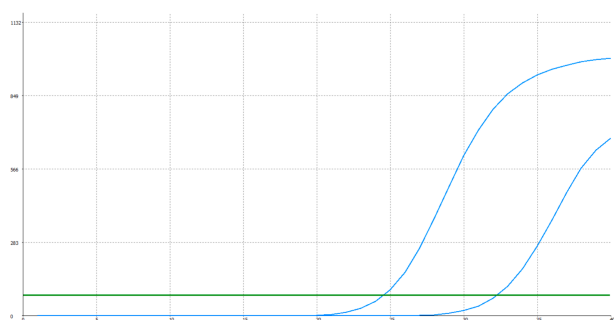
SUPPORT

SUPPORT@GENUINBIOTECH.COM
TEL: +1-540-855-7041

ORDERS

SALES@GENUINBIOTECH.COM
FAX: +1-540-855-7041

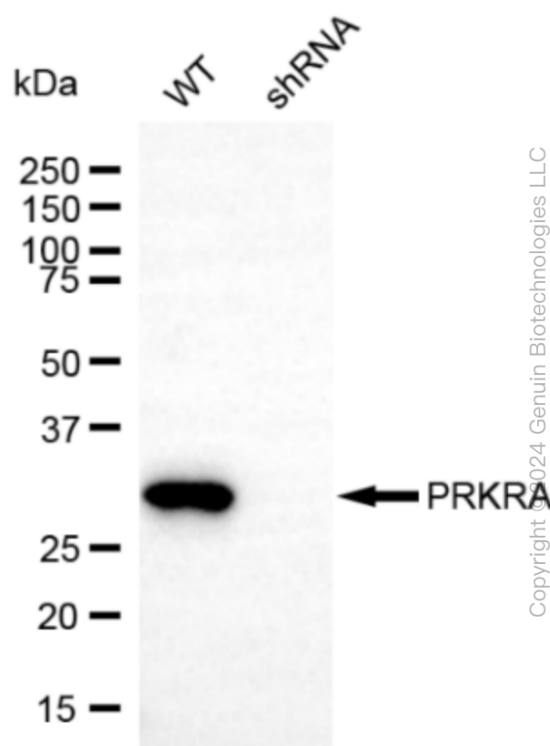
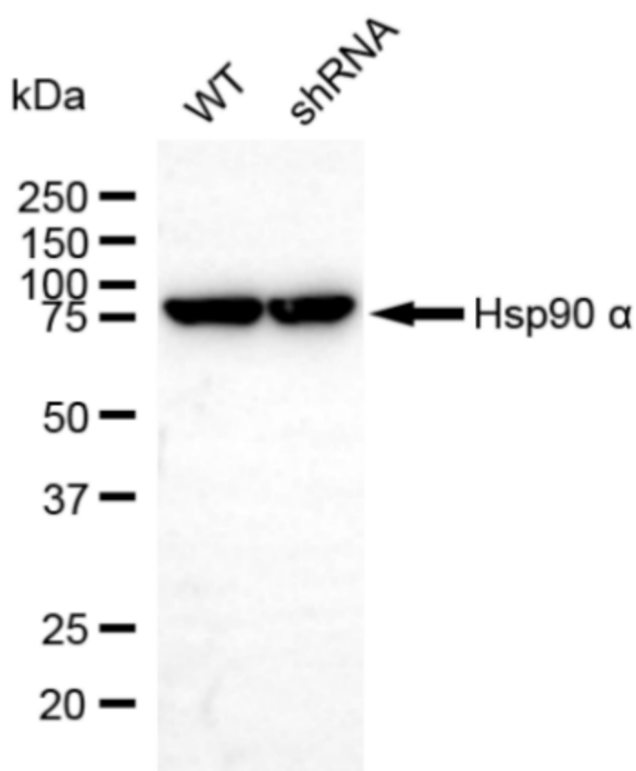
WWW.GENUINBIOTECH.COM



Genotype	Ct Value
Wild-Type	24.33
Knock-Down	31.34
$\Delta Ct (Ct_{KD} - Ct_{WT})$	7.01
% mRNA Reduction	↓ 99.2%

Copyright ©2025 Genuin Biotechnologies LLC

RT-qPCR analysis. HeLa cells were infected with PRKRA-specific shRNA lentiviral particles, total RNA was extracted from wild-type and knockdown cells, RT-qPCR was performed using gene-specific primers. $\Delta Ct (Ct_{KD} - Ct_{WT})$ was used to calculate mRNA reduction (%) between wild-type and knockdown cells using the following formula: $(1 - 1/2^{\Delta Ct}) \times 100\%$.



Copyright ©2024 Genuin Biotechnologies LLC

Western blotting analysis. PRKRA protein expression in wild-type (WT) and shRNA knockdown (KD) HeLa cells was detected using Western blotting. Hsp90 α served as a loading control. The blots were incubated with primary antibodies against PRKRA and Hsp90 α , respectively, followed by incubating with HRP-conjugated goat anti-rabbit secondary antibody. Images were developed using FeQ™ ECL Substrate Kit.