

# Human FOXA1 Knockdown Cell Line (WB-Validated)



**Catalog #: C68581**

## Aliases

FOXA1; Forkhead Box A1; HNF3A; Hepatocyte Nuclear Factor 3-Alpha; Forkhead Box Protein A1; Transcription Factor 3A; HNF-3-Alpha; HNF-3A; TCF-3A; TCF3A; Hepatocyte Nuclear Factor 3, Alpha

## Background

Gene Name: FOXA1

NCBI Gene Entry: [3169](#)

## Storage

Store at liquid nitrogen for 1 year.

## Kit Components

1. Human FOXA1 Knockdown Cell Line (Wb-Validated)
2. Wild-type cell line

## Parental Cell Line

Human cell line supplied by the client

## Validation Methods

RT-qPCR, Western blotting (WB)

## Shipping

Shipped on Dry Ice.

## Instructions For Use

This knockdown cell line should be paired with wild-type cell line for use.

**Note:** This product is for research use only.

## Validation Data

---

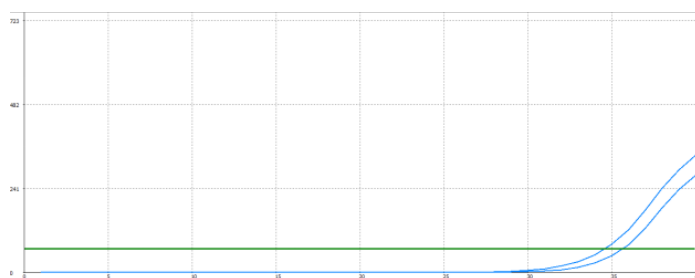
### SUPPORT

SUPPORT@GENUINBIOTECH.COM  
TEL: +1-540-855-7041

### ORDERS

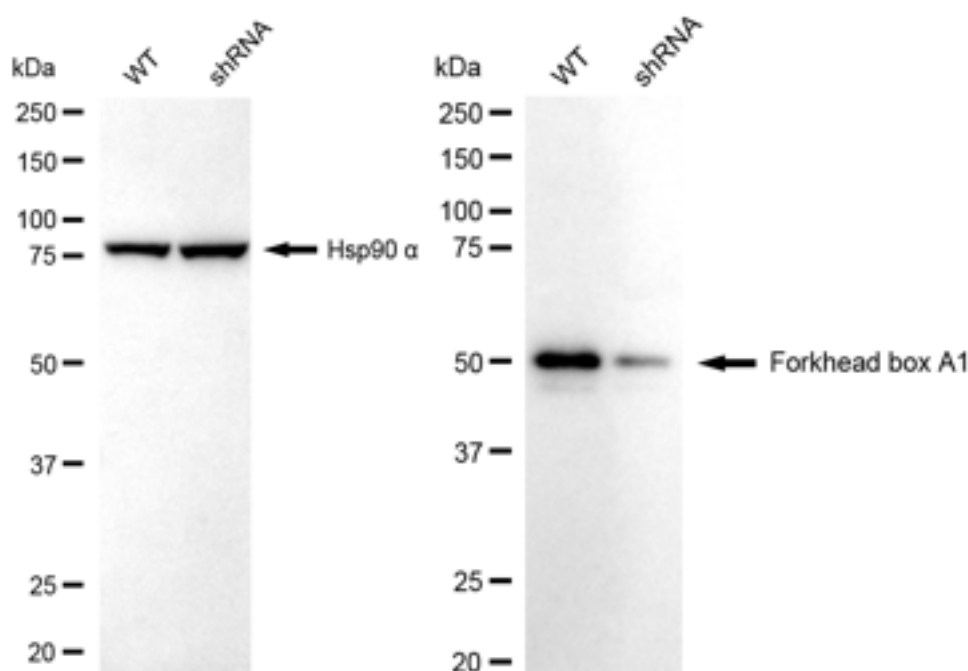
SALES@GENUINBIOTECH.COM  
FAX: +1-540-855-7041

[WWW.GENUINBIOTECH.COM](http://WWW.GENUINBIOTECH.COM)



Genotype	Ct Value
Wild-Type	32.41
Knock-Down	33.37
$\Delta$ Ct (CtKD-CtWT)	0.96
% mRNA Reduction	49%

RT-qPCR analysis. HepG2 cells were infected with FOXA1-specific shRNA lentiviral particles, total RNA was extracted from wild-type and knockdown cells, RT-qPCR was performed using gene-specific primers.  $\Delta$ Ct (CtKD-CtWT) was used to calculate mRNA reduction (%) between wild-type and knockdown cells using the following formula:  $(1 - 1/2^{\Delta\text{Ct}}) \times 100\%$ .



Western blotting analysis. FOXA1 protein expression in wild-type (WT) and shRNA knockdown (KD) HepG2 cells was detected using Western blotting. Hsp90  $\alpha$  served as a loading control. The blots were incubated with primary antibodies against FOXA1 and Hsp90  $\alpha$ , respectively, followed by incubating with HRP-conjugated goat anti-rabbit secondary antibody. Images were developed using FeQ™ ECL Substrate Kit.

