

# Human AQP1 Knockdown Cell Line (WB-Validated)



**Catalog #: C68661**

## Aliases

AQP1; Aquaporin 1 (Colton Blood Group); CHIP28; Aquaporin 1 (Channel-Forming Integral Protein, 28kDa, CO Blood Group); Water Channel Protein For Red Blood Cells And Kidney Proximal Tubule; Urine Water Channel; Aquaporin-CHIP; Aquaporin-1; CO; Aquaporin 1 (Channel-Forming Integral Protein, 28kDa); Channel-Like Integral Membrane Protein, 28-KDa; Aquaporin 1, Colton Blood Group Antigen; Colton Blood Group Antigen; Bloodgroup CO Protein; Colton Blood Group; Aquaporin 1; AQP-CHIP; AQP-1

## Background

Gene Name: AQP1

NCBI Gene Entry: [358](#)

## Storage

Store at liquid nitrogen for 1 year.

## Kit Components

1. Human AQP1 Knockdown Cell Line (Wb-Validated)
2. Wild-type cell line

## Parental Cell Line

Human cell line supplied by the client

## Validation Methods

RT-qPCR, Western blotting (WB)

## Shipping

Shipped on Dry Ice.

## Instructions For Use

This knockdown cell line should be paired with wild-type cell line for use.

**Note:** This product is for research use only.

## Validation Data

---

### SUPPORT

SUPPORT@GENUINBIOTECH.COM  
TEL: +1-540-855-7041

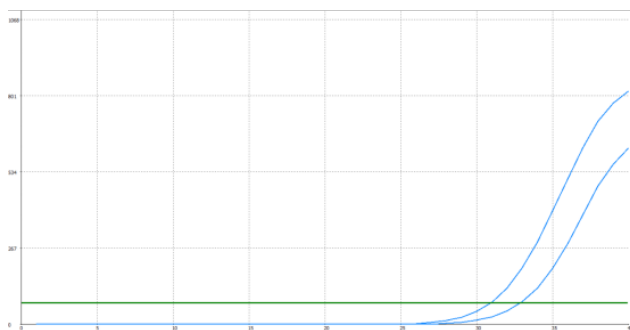
### ORDERS

SALES@GENUINBIOTECH.COM  
FAX: +1-540-855-7041

[WWW.GENUINBIOTECH.COM](http://WWW.GENUINBIOTECH.COM)

## Human AQP1 Knockdown Cell Line (WB-Validated)

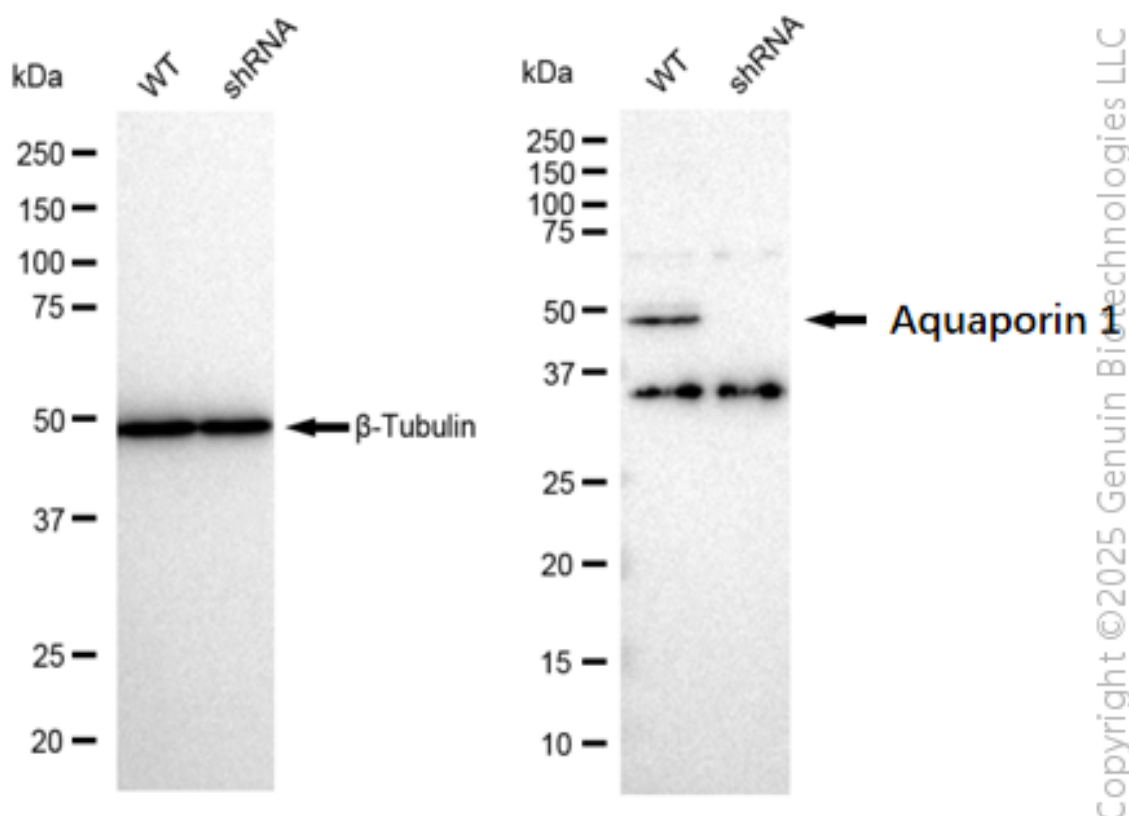
PAGE 2



Genotype	Ct Value
Wild-Type	30.40
Knock-Down	31.85
$\Delta$ Ct (CtKD-CtWT)	1.45
% mRNA Reduction	63%

Copyright © 2025 Genuin Biotechnologies LLC

RT-qPCR analysis. HeLa cells were infected with AQP1-specific shRNA lentiviral particles, total RNA was extracted from wild-type and knockdown cells, RT-qPCR was performed using gene-specific primers.  $\Delta$ Ct (CtKD-CtWT) was used to calculate mRNA reduction (%) between wild-type and knockdown cells using the following formula:  $(1 - 1/2^{\Delta\text{Ct}}) \times 100\%$ .



Copyright © 2025 Genuin Biotechnologies LLC

Western blotting analysis. AQP1 protein expression in wild-type (WT) and shRNA knockdown (KD) HeLa cells was detected using Western blotting.  $\beta$ -Tubulin served as a loading control. The

### SUPPORT

SUPPORT@GENUINBIOTECH.COM  
TEL: +1-540-855-7041

### ORDERS

SALES@GENUINBIOTECH.COM  
FAX: +1-540-855-7041

WWW.GENUINBIOTECH.COM

blots were incubated with primary antibodies against AQP1 and  $\beta$ -Tubulin, respectively, followed by incubating with HRP-conjugated goat anti-rabbit secondary antibody. Images were developed using FeQ™ ECL Substrate Kit.