

# Human ATG7 Knockdown Cell Line (WB-Validated)



**Catalog #: C68737**

## Aliases

ATG7; Autophagy Related 7; Ubiquitin-Activating Enzyme E1-Like Protein; Ubiquitin-Like Modifier-Activating Enzyme ATG7; ATG12-Activating Enzyme E1 ATG7; APG7L; HAGP7; ATG7 Autophagy Related 7 Homolog (S. Cerevisiae); APG7 Autophagy 7-Like (S. Cerevisiae); Autophagy-Related Protein 7; APG7 Autophagy 7-Like; APG7-LIKE; APG7-Like; GSA7

## Background

Gene Name: ATG7

NCBI Gene Entry: [10533](#)

## Storage

Store at liquid nitrogen for 1 year.

## Kit Components

1. Human ATG7 Knockdown Cell Line (Wb-Validated)
2. Wild-type cell line

## Parental Cell Line

Human cell line supplied by the client

## Validation Methods

RT-qPCR, Western blotting (WB)

## Shipping

Shipped on Dry Ice.

## Instructions For Use

This knockdown cell line should be paired with wild-type cell line for use.

**Note:** This product is for research use only.

## Validation Data

---

### SUPPORT

SUPPORT@GENUINBIOTECH.COM  
TEL: +1-540-855-7041

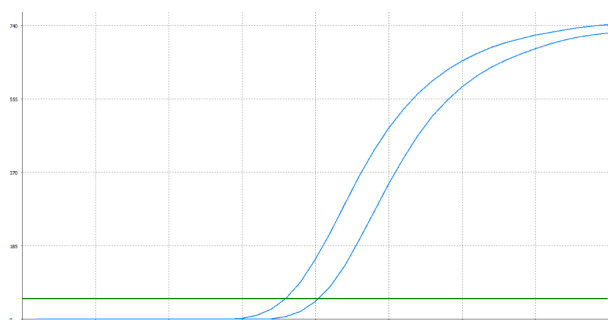
### ORDERS

SALES@GENUINBIOTECH.COM  
FAX: +1-540-855-7041

[WWW.GENUINBIOTECH.COM](http://WWW.GENUINBIOTECH.COM)

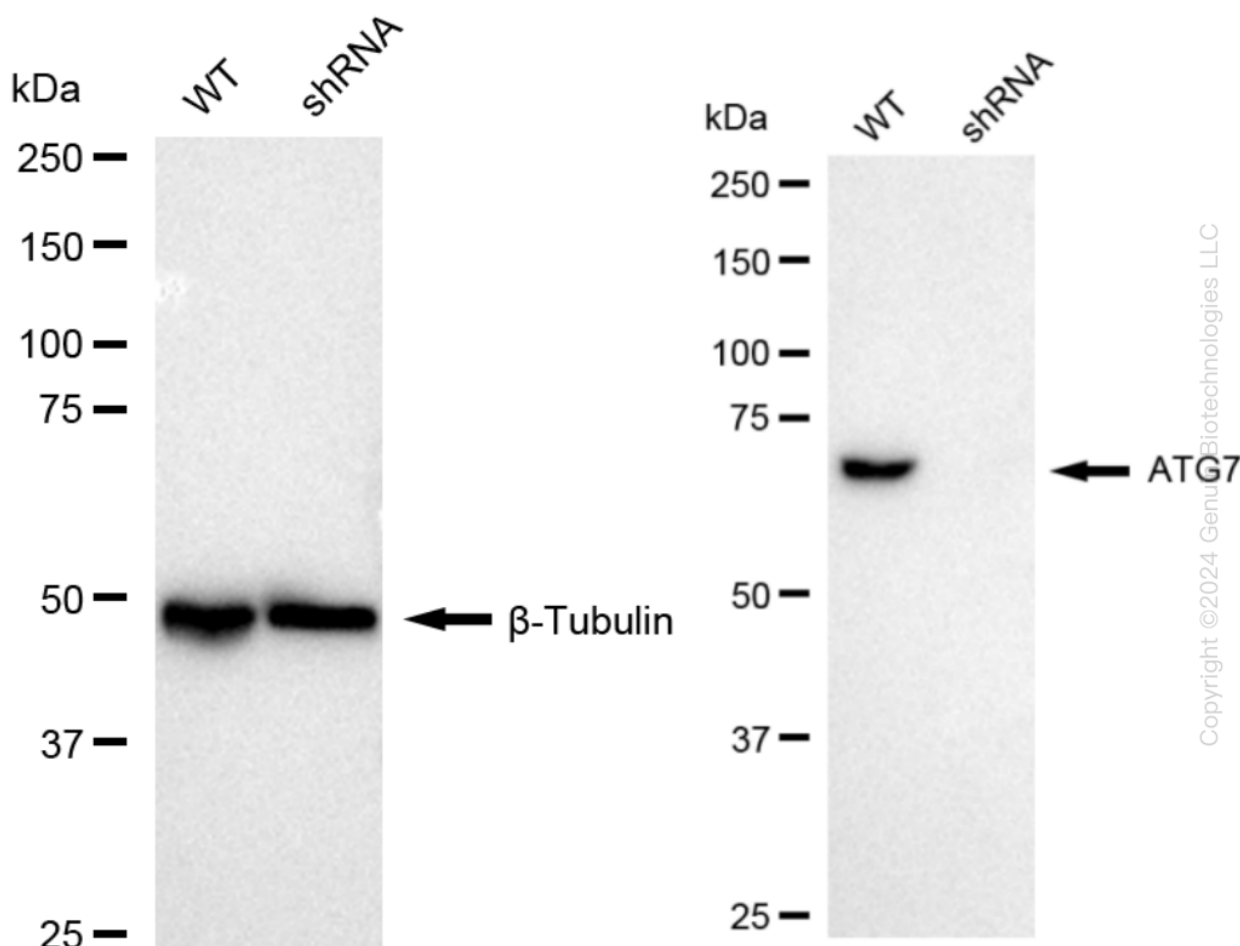
## Human ATG7 Knockdown Cell Line (WB-Validated)

PAGE 2



Genotype	Ct Value
Wild-Type	18.00
Knock-Down	20.19
$\Delta Ct (Ct_{KD} - Ct_{WT})$	2.19
% mRNA Reduction	↓ 78%

RT-qPCR analysis. 293T cells were infected with ATG7-specific shRNA lentiviral particles, total RNA was extracted from wild-type and knockdown cells, RT-qPCR was performed using gene-specific primers.  $\Delta Ct (Ct_{KD} - Ct_{WT})$  was used to calculate mRNA reduction (%) between wild-type and knockdown cells using the following formula:  $(1 - 1/2^{\Delta Ct}) \times 100\%$ .



Western blotting analysis. ATG7 protein expression in wild-type (WT) and shRNA knockdown (KD) 293T cells was detected using Western blotting.  $\beta$ -Tubulin served as a loading control. The blots were incubated with primary antibodies against ATG7 and  $\beta$ -Tubulin, respectively, followed by incubating with HRP-conjugated goat anti-rabbit secondary antibody. Images were developed using FeQ™ ECL Substrate Kit.

### SUPPORT

SUPPORT@GENUINBIOTECH.COM  
TEL: +1-540-855-7041

### ORDERS

SALES@GENUINBIOTECH.COM  
FAX: +1-540-855-7041

[WWW.GENUINBIOTECH.COM](http://WWW.GENUINBIOTECH.COM)