

# Human PIK3CB Knockdown Cell Line (WB-Validated)



**Catalog #: C6911**

## Aliases

PIK3CB; Phosphatidylinositol-4,5-Bisphosphate 3-Kinase; Catalytic SubunitBeta; PI3K; PIK3C1; PI3KBETA; Phosphoinositide-3-Kinase; Catalytic; Beta Polypeptide; Phosphatidylinositol 4,5-Bisphosphate 3-Kinase Catalytic Subunit Beta Isoform; Phosphatidylinositol 4,5-Bisphosphate 3-Kinase 110 KDa Catalytic Subunit Beta; Phosphatidylinositol-4,5-Bisphosphate 3-Kinase 110 KDa Catalytic Subunit Beta; PtdIns-3-Kinase Subunit Beta; PI3-Kinase P110 Subunit Beta; PtdIns-3-Kinase Subunit P110-Beta; PtdIns-3-Kinase P110; PI3K-beta; PI3Kbeta; PI3-Kinase Subunit Beta; p110beta; EC 2.7.1.153; PI3KCB; P110BETA; EC 2.7.1

## Background

Gene Name: PIK3CB

NCBI Gene Entry: [5291](#)

## Storage

Store at liquid nitrogen for 1 year.

## Kit Components

1. Human PIK3CB Knockdown Cell Line (Wb-Validated)
2. Wild-type cell line

## Parental Cell Line

Human cell line supplied by the client

## Validation Methods

RT-qPCR, Western blotting (WB)

## Shipping

Shipped on Dry Ice.

## Instructions For Use

This knockdown cell line should be paired with wild-type cell line for use.

**Note:** This product is for research use only.

## Validation Data

---

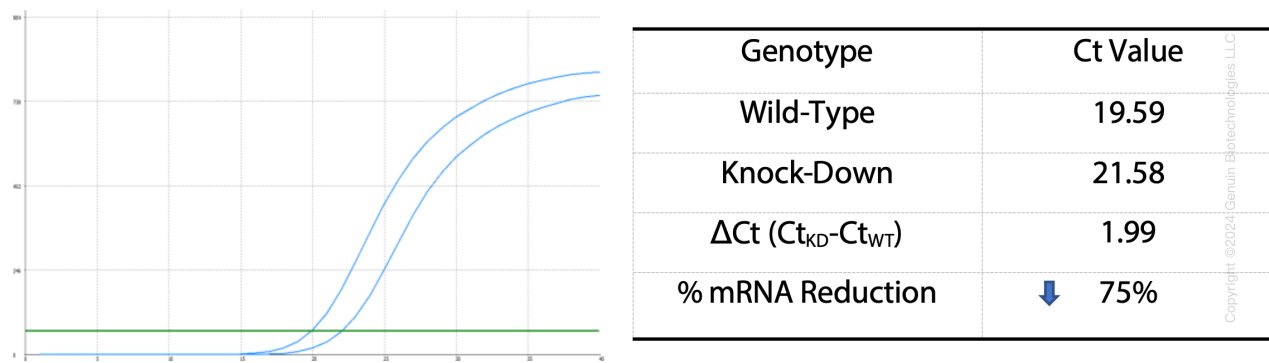
### SUPPORT

SUPPORT@GENUINBIOTECH.COM  
TEL: +1-540-855-7041

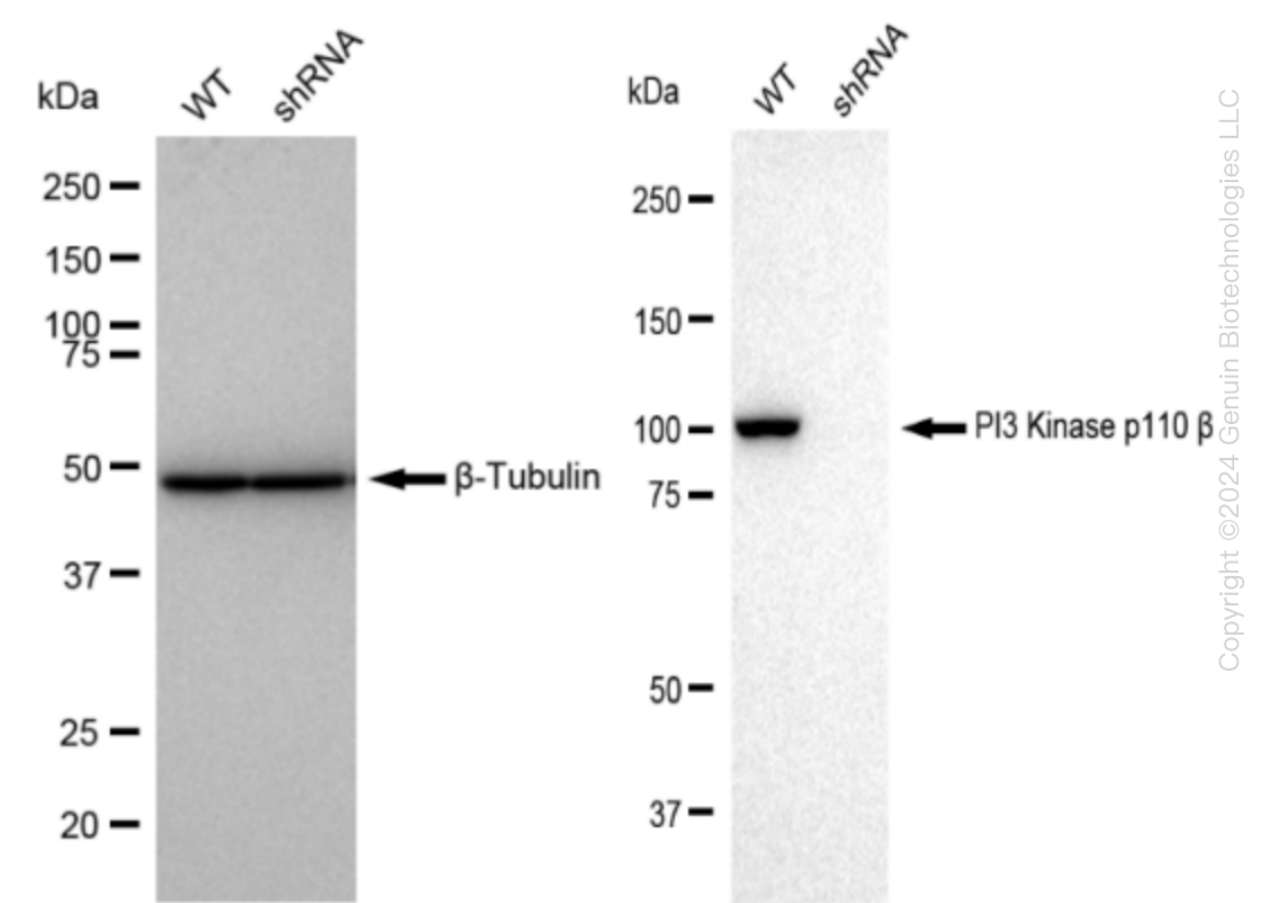
### ORDERS

SALES@GENUINBIOTECH.COM  
FAX: +1-540-855-7041

[WWW.GENUINBIOTECH.COM](http://WWW.GENUINBIOTECH.COM)



RT-qPCR analysis. HT-1080 cells were infected with PIK3CB-specific shRNA lentiviral particles, total RNA was extracted from wild-type and knockdown cells, RT-qPCR was performed using gene-specific primers.  $\Delta Ct (Ct_{KD}-Ct_{WT})$  was used to calculate mRNA reduction (%) between wild-type and knockdown cells using the following formula:  $(1-1/2^{\Delta Ct}) \times 100\%$ .



Western blotting analysis. PIK3CB protein expression in wild-type (WT) and shRNA knockdown (KD) HT-1080 cells was detected using Western blotting.  $\beta$ -Tubulin served as a loading control. The blots were incubated with primary antibodies (Cat#64311, 1:5,000) against PIK3CB and  $\beta$ -

## **Human PIK3CB Knockdown Cell Line (WB-Validated)**

PAGE 3

Tubulin, respectively, followed by incubating with HRP-conjugated goat anti-rabbit secondary antibody (Cat#201, 1:20,000). Images were developed using FeQ™ ECL Substrate Kit (Cat#226).

---

### **SUPPORT**

SUPPORT@GENUINBIOTECH.COM  
TEL: +1-540-855-7041

### **ORDERS**

SALES@GENUINBIOTECH.COM  
FAX: +1-540-855-7041

**WWW.GENUINBIOTECH.COM**