

Human CA9 Knockdown Cell Line (WB-Validated)



Catalog #: C69190

Aliases

CA9; Carbonic Anhydrase 9; CAIX; MN; Carbonic Anhydrase IX; Renal Cell Carcinoma-Associated Antigen G250; RCC-Associated Protein G250; RCC-Associated Antigen G250; Carbonate Dehydratase IX; Carbonic Dehydratase; Membrane Antigen MN; P54/58N; CA-IX; PMW1; EC 4.2.1.1; G250

Background

Gene Name: CA9

NCBI Gene Entry: [768](#)

Storage

Store at liquid nitrogen for 1 year.

Kit Components

1. Human CA9 Knockdown Cell Line (Wb-Validated)
2. Wild-type cell line

Parental Cell Line

Human cell line supplied by the client

Validation Methods

RT-qPCR, Western blotting (WB)

Shipping

Shipped on Dry Ice.

Instructions For Use

This knockdown cell line should be paired with wild-type cell line for use.

Note: This product is for research use only.

Validation Data

SUPPORT

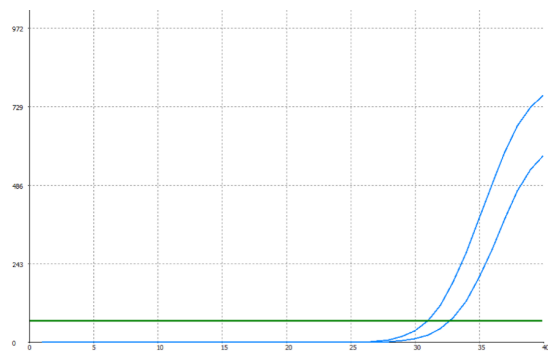
SUPPORT@GENUINBIOTECH.COM
TEL: +1-540-855-7041

ORDERS

SALES@GENUINBIOTECH.COM
FAX: +1-540-855-7041

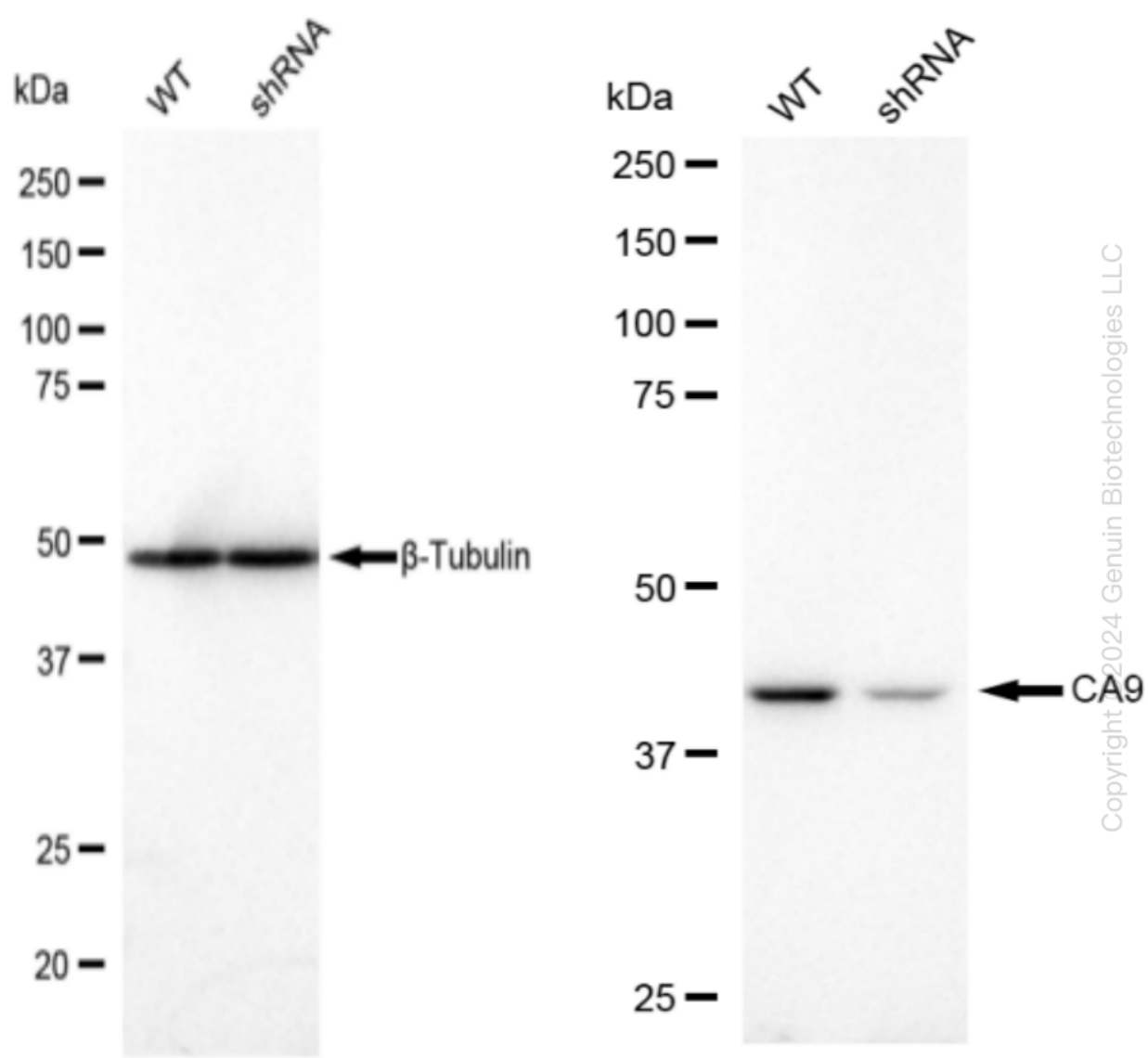
WWW.GENUINBIOTECH.COM

Human CA9 Knockdown Cell Line (WB-Validated)



Genotype	Ct Value
Wild-Type	30.59
Knock-Down	31.90
Δ Ct (Ct _{KD} -Ct _{WT})	1.31
% mRNA Reduction	↓ 60%

RT-qPCR analysis. HeLa cells were infected with CA9-specific shRNA lentiviral particles, total RNA was extracted from wild-type and knockdown cells, RT-qPCR was performed using gene-specific primers. Δ Ct (Ct_{KD}-Ct_{WT}) was used to calculate mRNA reduction (%) between wild-type and knockdown cells using the following formula: $(1-1/2^{\Delta$ Ct) x 100%.



SUPPORT

SUPPORT@GENUINBIOTECH.COM
TEL: +1-540-855-7041

ORDERS

SALES@GENUINBIOTECH.COM
FAX: +1-540-855-7041

WWW.GENUINBIOTECH.COM

Human CA9 Knockdown Cell Line (WB-Validated)

PAGE 3

Western blotting analysis. CA9 protein expression in wild-type (WT) and shRNA knockdown (KD) HeLa cells was detected using Western blotting. β -Tubulin served as a loading control. The blots were incubated with primary antibodies against CA9 and β -Tubulin, respectively, followed by incubating with HRP-conjugated goat anti-mouse secondary antibody. Images were developed using FeQ™ ECL Substrate Kit.

SUPPORT

SUPPORT@GENUINBIOTECH.COM
TEL: +1-540-855-7041

ORDERS

SALES@GENUINBIOTECH.COM
FAX: +1-540-855-7041

WWW.GENUINBIOTECH.COM