

Human CHAF1A Knockdown Cell Line (WB-Validated)



Catalog #: C69311

Aliases

CAF1P150; CAF1B; CAF-1; CAF1; P150; Chromatin Assembly Factor I P150 Subunit; Chromatin Assembly Factor I (150 KDa); CAF-I 150 KDa Subunit; CAF-1 Subunit A; CAF-I P150; MGC71229; Hp150; Chromatin Assembly Factor 1, Subunit A (P150); CTB-50L17.7; CAF

Background

Gene Name: CHAF1A

NCBI Gene Entry: [10036](#)

Storage

Store at liquid nitrogen for 1 year.

Kit Components

1. Human CHAF1A Knockdown Cell Line (Wb-Validated)
2. Wild-type cell line

Parental Cell Line

Human cell line supplied by the client

Validation Methods

RT-qPCR, Western blotting (WB)

Shipping

Shipped on Dry Ice.

Instructions For Use

This knockdown cell line should be paired with wild-type cell line for use.

Note: This product is for research use only.

Validation Data

SUPPORT

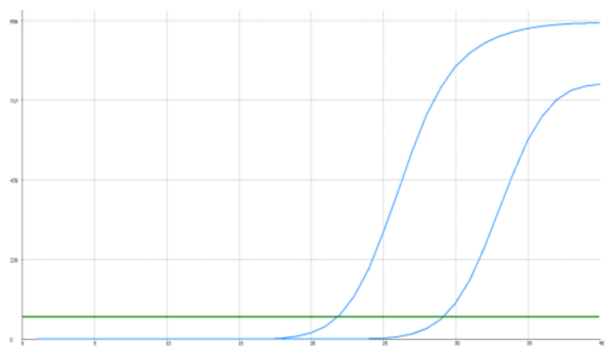
SUPPORT@GENUINBIOTECH.COM
TEL: +1-540-855-7041

ORDERS

SALES@GENUINBIOTECH.COM
FAX: +1-540-855-7041

WWW.GENUINBIOTECH.COM

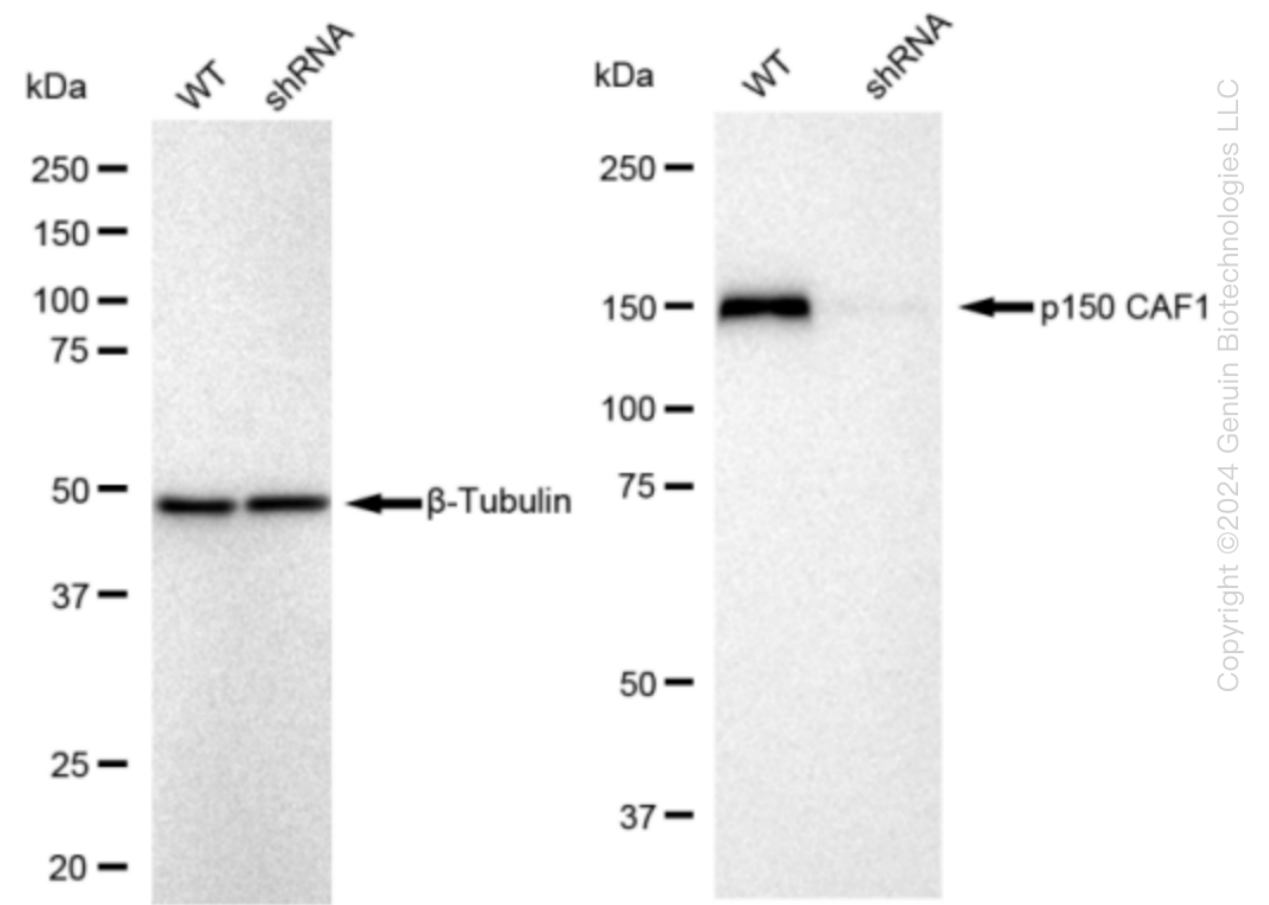
Human CHAF1A Knockdown Cell Line (WB-Validated)



Genotype	Ct Value
Wild-Type	21.85
Knock-Down	28.80
Δ Ct (Ct _{KD} -Ct _{WT})	6.95
% mRNA Reduction	↓ 99%

Copyright ©2024 Genuin Biotechnologies LLC

RT-qPCR analysis. HeLa cells were infected with CHAF1A-specific shRNA lentiviral particles, total RNA was extracted from wild-type and knockdown cells, RT-qPCR was performed using gene-specific primers. Δ Ct (Ct_{KD}-Ct_{WT}) was used to calculate mRNA reduction (%) between wild-type and knockdown cells using the following formula: $(1-1/2^{\Delta Ct}) \times 100\%$.



Copyright ©2024 Genuin Biotechnologies LLC

Western blotting analysis. CHAF1A protein expression in wild-type (WT) and shRNA knockdown (KD) HeLa cells was detected using Western blotting. β -Tubulin served as a loading control. The blots were incubated with primary antibodies (Cat#69311, 1:5,000) against CHAF1A and β -

SUPPORT

SUPPORT@GENUINBIOTECH.COM
TEL: +1-540-855-7041

ORDERS

SALES@GENUINBIOTECH.COM
FAX: +1-540-855-7041

WWW.GENUINBIOTECH.COM

Tubulin, respectively, followed by incubating with HRP-conjugated goat anti-rabbit secondary antibody (Cat#201, 1:20,000). Images were developed using FeQ™ ECL Substrate Kit (Cat#226).