

Human EIF2AK2 Knockdown Cell Line (WB-Validated)



Catalog #: C69322

Aliases

EIF2AK2; eIF-2A protein kinase 2; Protein kinase RNA-activated; PKR; p68 kinase; P1/eIF-2A protein kinase

Background

Gene Name: EIF2AK2

NCBI Gene Entry: [5610](#)

Storage

Store at liquid nitrogen for 1 year.

Kit Components

1. Human EIF2AK2 Knockdown Cell Line (Wb-Validated)
2. Wild-type cell line

Parental Cell Line

Human cell line supplied by the client

Validation Methods

RT-qPCR, Western blotting (WB)

Shipping

Shipped on Dry Ice.

Instructions For Use

This knockdown cell line should be paired with wild-type cell line for use.

Note: This product is for research use only.

Validation Data

SUPPORT

SUPPORT@GENUINBIOTECH.COM
TEL: +1-540-855-7041

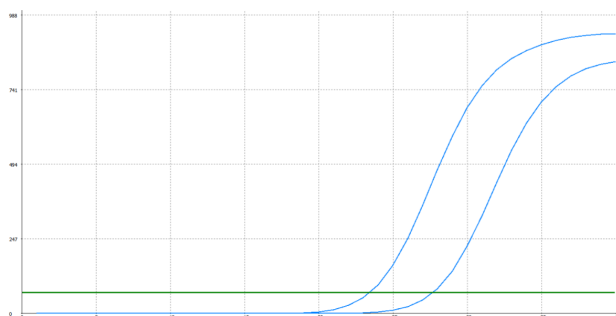
ORDERS

SALES@GENUINBIOTECH.COM
FAX: +1-540-855-7041

WWW.GENUINBIOTECH.COM

Human EIF2AK2 Knockdown Cell Line (WB-Validated)

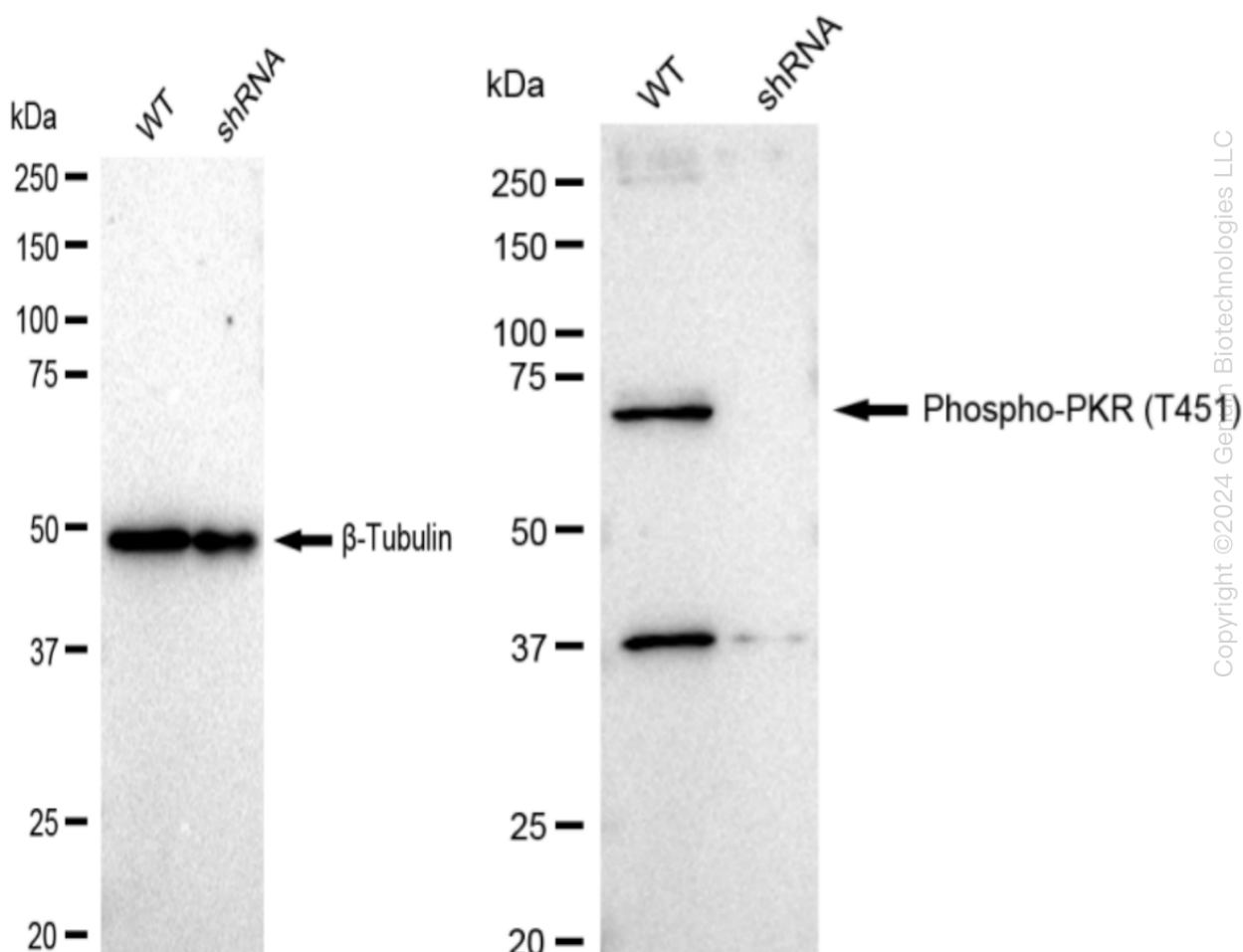
PAGE 2



Genotype	Ct Value
Wild-Type	23.32
Knock-Down	27.4
$\Delta Ct (Ct_{KD} - Ct_{WT})$	4.08
% mRNA Reduction	↓ 94%

Copyright ©2024 Genin Biotechnologies LLC

RT-qPCR analysis. HeLa cells were infected with EIF2AK2-specific shRNA lentiviral particles, total RNA was extracted from wild-type and knockdown cells, RT-qPCR was performed using gene-specific primers. $\Delta Ct (Ct_{KD} - Ct_{WT})$ was used to calculate mRNA reduction (%) between wild-type and knockdown cells using the following formula: $(1 - 1/2^{\Delta Ct}) \times 100\%$.



Copyright ©2024 Genin Biotechnologies LLC

SUPPORT

SUPPORT@GENUINBIOTECH.COM
TEL: +1-540-855-7041

ORDERS

SALES@GENUINBIOTECH.COM
FAX: +1-540-855-7041

WWW.GENUINBIOTECH.COM

Human EIF2AK2 Knockdown Cell Line (WB-Validated)

PAGE 3

Tubulin , respectively, followed by incubating with HRP-conjugated goat anti-rabbit secondary antibody (Cat#201, 1:20,000). Images were developed using FeQ™ ECL Substrate Kit (Cat#226).

SUPPORT

SUPPORT@GENUINBIOTECH.COM
TEL: +1-540-855-7041

ORDERS

SALES@GENUINBIOTECH.COM
FAX:+1-540-855-7041

WWW.GENUINBIOTECH.COM