

Human ALKBH1 Knockdown Cell Line (WB-Validated)



Catalog #: C69441

Aliases

ALKBH1; AlkB Homolog 1, Histone H2A Dioxygenase; ABH; ALKBH; HABH; Alpha-Ketoglutarate-Dependent Dioxygenase ABH1; Alkylated DNA Repair Protein AlkB Homolog 1; DNA N6-Methyl Adenine Demethylase ALKBH1; MRNA N(3)-Methylcytidine Demethylase; DNA Oxidative Demethylase ALKBH1; Nucleic Acid Dioxygenase ALKBH1; DNA 6mA Demethylase; DNA Lyase ABH1; AlkB; ABH1; AlkB, Alkylation Repair Homolog 1 (E. Coli); AlkB, Alkylation Repair Homolog (E. Coli); TRNA N1-Methyl Adenine Demethylase; AlkB, Alkylation Repair Homolog 1; Alkylation Repair, AlkB Homolog; DNA Demethylase ALKBH1; EC 1.14.11.51; EC 1.14.11.33; EC 1.14.11.-; EC 4.2.99.18; ALKB

Background

Gene Name: ALKBH1
NCBI Gene Entry: [8846](#)

Storage

Store at liquid nitrogen for 1 year.

Kit Components

1. Human ALKBH1 Knockdown Cell Line (Wb-Validated)
2. Wild-type cell line

Parental Cell Line

Human cell line supplied by the client

Validation Methods

RT-qPCR, Western blotting (WB)

Shipping

Shipped on Dry Ice.

Instructions For Use

This knockdown cell line should be paired with wild-type cell line for use.

Note: This product is for research use only.

Validation Data

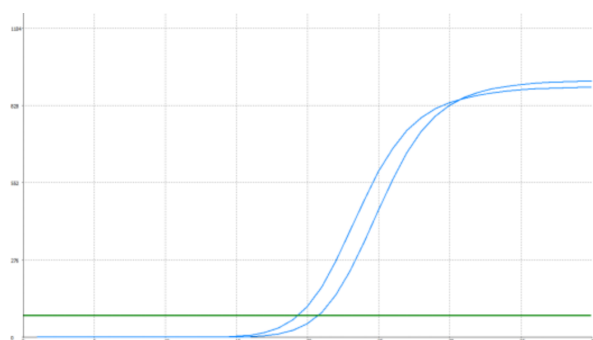
SUPPORT

SUPPORT@GENUINBIOTECH.COM
TEL: +1-540-855-7041

ORDERS

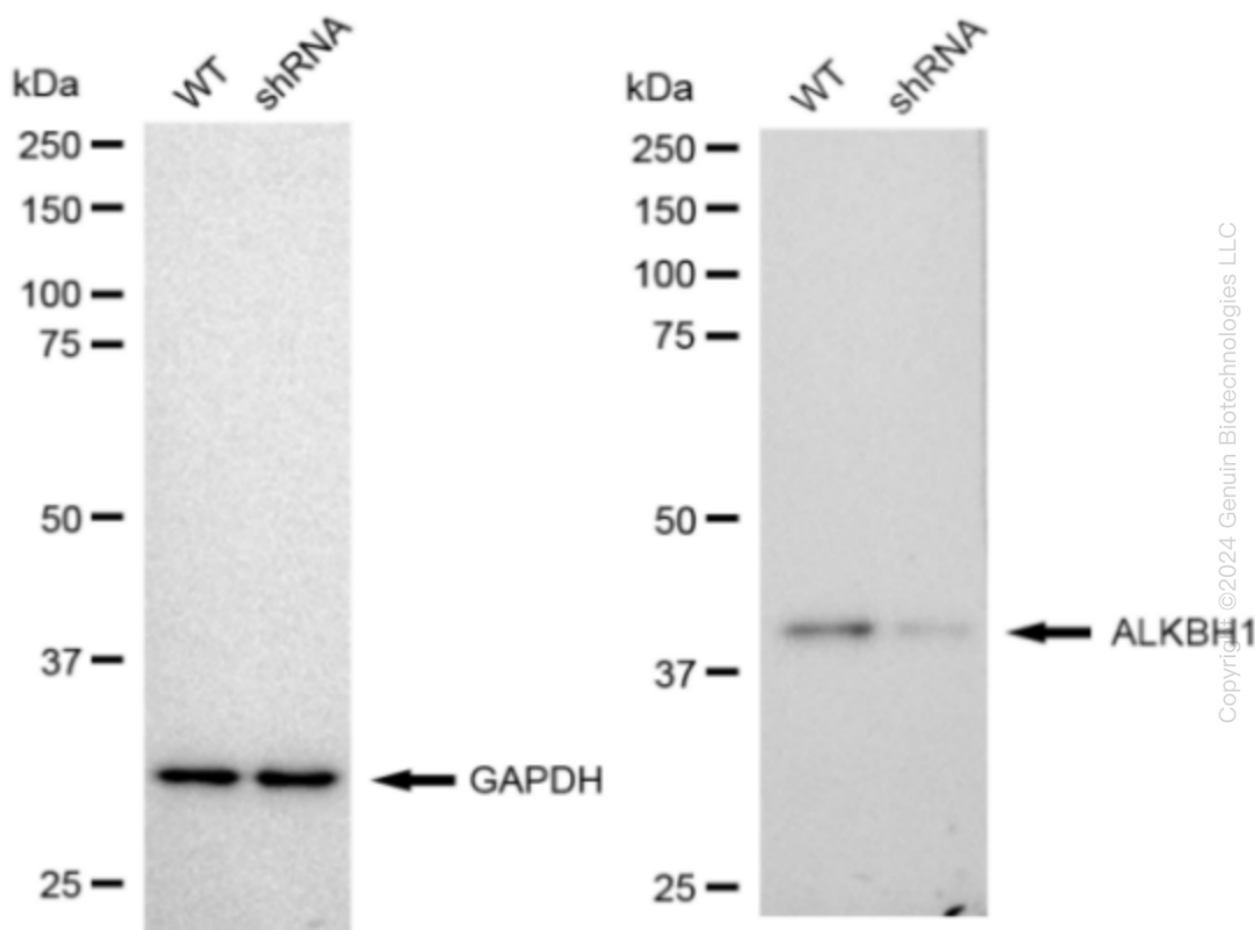
SALES@GENUINBIOTECH.COM
FAX: +1-540-855-7041

WWW.GENUINBIOTECH.COM



Genotype	Ct Value
Wild-Type	19.02
Knock-Down	20.40
$\Delta Ct (Ct_{KD} - Ct_{WT})$	1.38
% mRNA Reduction	↓ 62%

RT-qPCR analysis. HeLa cells were infected with ALKBH1-specific shRNA lentiviral particles, total RNA was extracted from wild-type and knockdown cells, RT-qPCR was performed using gene-specific primers. $\Delta Ct (Ct_{KD} - Ct_{WT})$ was used to calculate mRNA reduction (%) between wild-type and knockdown cells using the following formula: $(1 - 1/2^{\Delta Ct}) \times 100\%$.



Western blotting analysis. ALKBH1 protein expression in wild-type (WT) and shRNA knockdown (KD) HeLa cells was detected using Western blotting. GAPDH served as a loading control. The blots were incubated with primary antibodies against ALKBH1 and GAPDH, respectively, followed by incubating with HRP-conjugated goat anti-rabbit secondary antibody. Images were

Human ALKBH1 Knockdown Cell Line (WB-Validated)

PAGE 3

developed using FeQ™ ECL Substrate Kit.

SUPPORT

SUPPORT@GENUINBIOTECH.COM
TEL: +1-540-855-7041

ORDERS

SALES@GENUINBIOTECH.COM
FAX: +1-540-855-7041

WWW.GENUINBIOTECH.COM