

Human ANXA5 Knockdown Cell Line (WB-Validated)



Catalog #: C69585

Aliases

ANXA5; Annexin A5; CPB-I; PAP-I; Placental Anticoagulant Protein I; Vascular Anticoagulant-Alpha; Calphobindin I; Endonexin II; Annexin V; VAC-Alph; RPRGL3; ANX5; ENX2; Placental Anticoagulant Protein 4; Thromboplastin Inhibitor; Anchorin CII; Lipocortin V; VAC-Alpha; Annexin-5; PP4; Epididymis Secretory Protein Li 7; HEL-S-7; CBP-I

Background

Gene Name: ANXA5

NCBI Gene Entry: [308](#)

Storage

Store at liquid nitrogen for 1 year.

Kit Components

1. Human ANXA5 Knockdown Cell Line (Wb-Validated)
2. Wild-type cell line

Parental Cell Line

Human cell line supplied by the client

Validation Methods

RT-qPCR, Western blotting (WB)

Shipping

Shipped on Dry Ice.

Instructions For Use

This knockdown cell line should be paired with wild-type cell line for use.

Note: This product is for research use only.

Validation Data

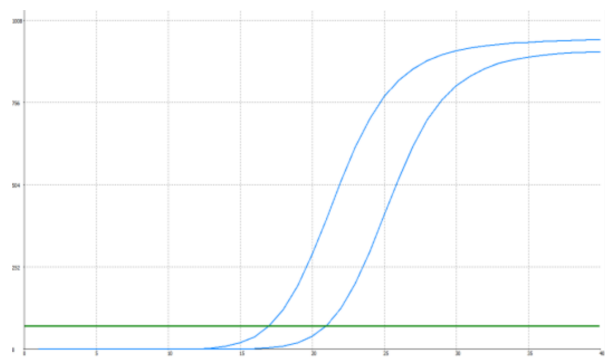
SUPPORT

SUPPORT@GENUINBIOTECH.COM
TEL: +1-540-855-7041

ORDERS

SALES@GENUINBIOTECH.COM
FAX: +1-540-855-7041

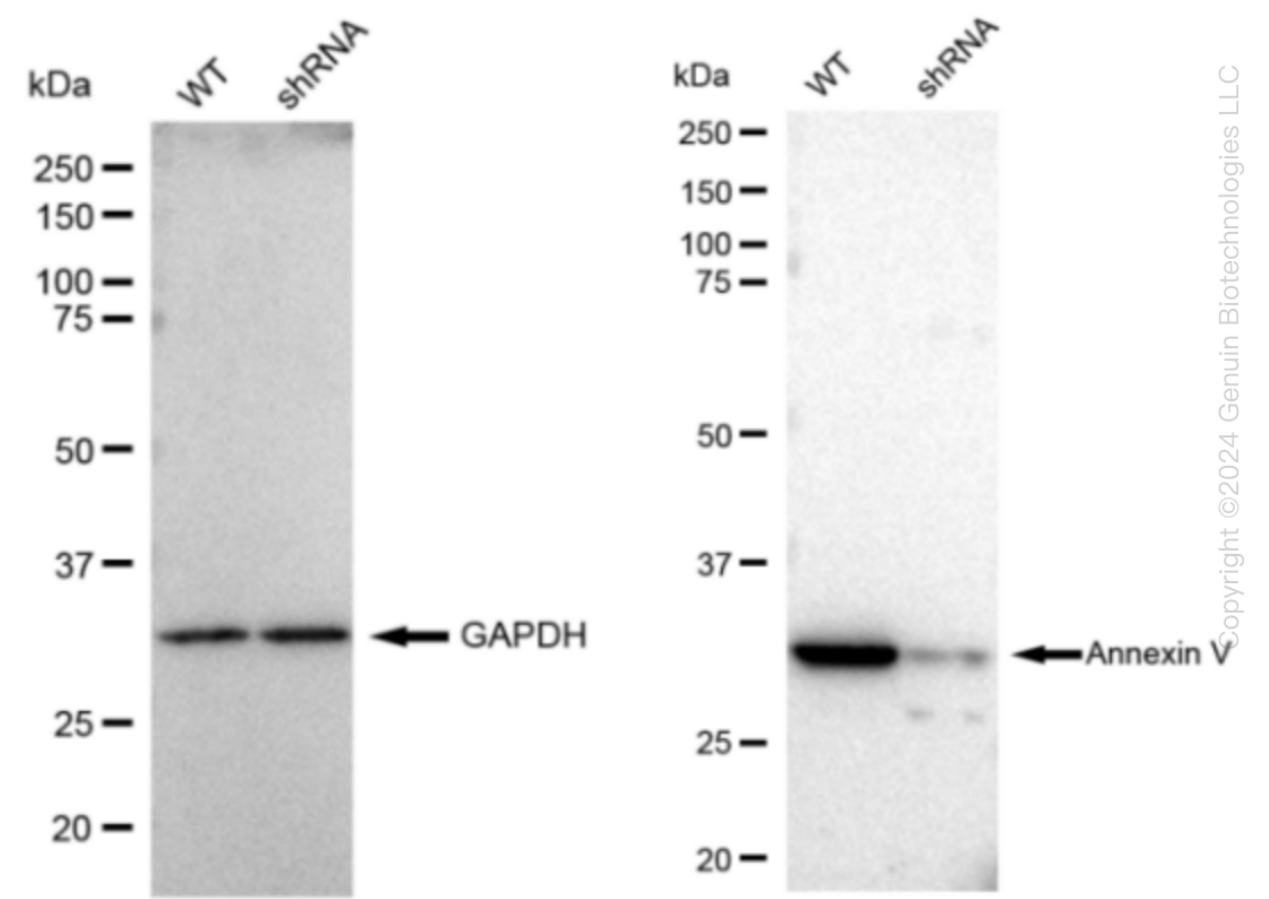
WWW.GENUINBIOTECH.COM



Genotype	Ct Value
Wild-Type	16.90
Knock-Down	20.75
$\Delta Ct (Ct_{KD}-Ct_{WT})$	3.85
% mRNA Reduction	↓ 93%

Copyright ©2024 Genuin Biotechnologies LLC

RT-qPCR analysis. HeLa cells were infected with ANXA5-specific shRNA lentiviral particles, total RNA was extracted from wild-type and knockdown cells, RT-qPCR was performed using gene-specific primers. $\Delta Ct (Ct_{KD}-Ct_{WT})$ was used to calculate mRNA reduction (%) between wild-type and knockdown cells using the following formula: $(1-1/2^{\Delta Ct}) \times 100\%$.



Copyright ©2024 Genuin Biotechnologies LLC

Western blotting analysis. ANXA5 protein expression in wild-type (WT) and shRNA knockdown (KD) HeLa cells was detected using Western blotting. β -Tubulin served as a loading control. The

Human ANXA5 Knockdown Cell Line (WB-Validated)

PAGE 3

blots were incubated with primary antibodies against ANXA5 and β -Tubulin, respectively, followed by incubating with HRP-conjugated goat anti-rabbit secondary antibody. Images were developed using FeQ™ ECL Substrate Kit.

SUPPORT

SUPPORT@GENUINBIOTECH.COM
TEL: +1-540-855-7041

ORDERS

SALES@GENUINBIOTECH.COM
FAX: +1-540-855-7041

WWW.GENUINBIOTECH.COM