

Human ARNT Knockdown Cell Line (WB-Validated)



Catalog #: C69657

Aliases

ARNT; Aryl Hydrocarbon Receptor Nuclear Translocator ; BHLHe2; HIF-1beta; Class E Basic Helix-Loop-Helix Protein 2; Hypoxia Inducible Factor 1; Subunit Beta; Dioxin Receptor, Nuclear Translocator; HIF-1-Beta; HIF1-Beta; ARNT1; Hypoxia-Inducible Factor 1, Beta Subunit; Hypoxia-Inducible Factor 1-Beta; ARNT Protein; HIF1BETA; BHLHE2; HIF1B; TANGO

Background

Gene Name: ARNT

NCBI Gene Entry: [405](#)

Storage

Store at liquid nitrogen for 1 year.

Kit Components

1. Human ARNT Knockdown Cell Line (Wb-Validated)
2. Wild-type cell line

Parental Cell Line

Human cell line supplied by the client

Validation Methods

RT-qPCR, Western blotting (WB)

Shipping

Shipped on Dry Ice.

Instructions For Use

This knockdown cell line should be paired with wild-type cell line for use.

Note: This product is for research use only.

Validation Data

SUPPORT

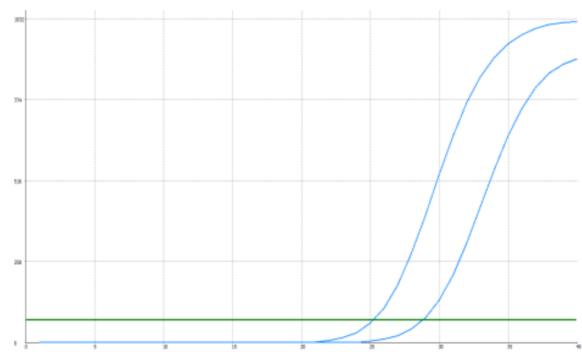
SUPPORT@GENUINBIOTECH.COM
TEL: +1-540-855-7041

ORDERS

SALES@GENUINBIOTECH.COM
FAX: +1-540-855-7041

WWW.GENUINBIOTECH.COM

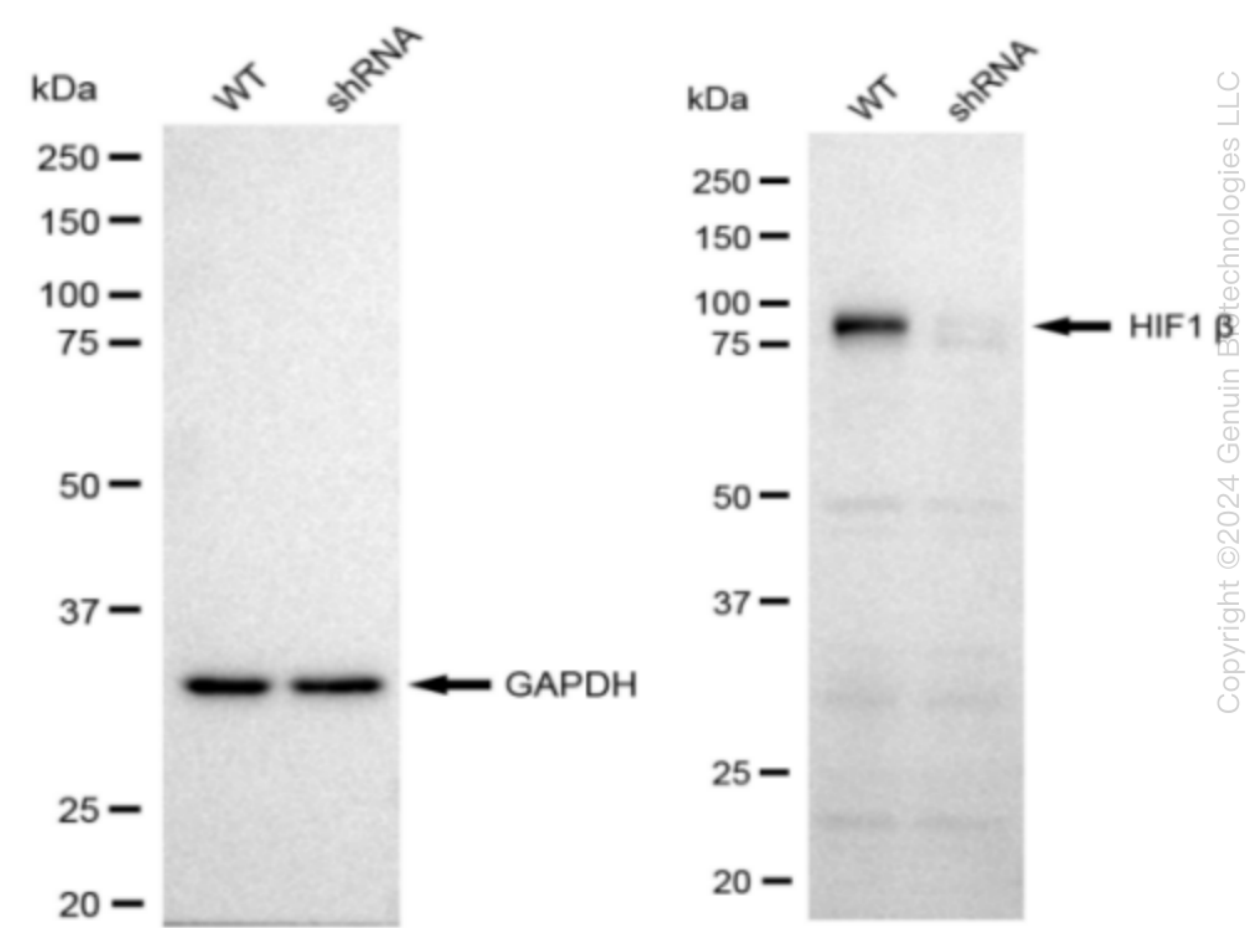
Human ARNT Knockdown Cell Line (WB-Validated)



Genotype	Ct Value
Wild-Type	25.23
Knock-Down	28.59
Δ Ct (Ct _{KD} -Ct _{WT})	3.36
% mRNA Reduction	↓ 90%

Copyright ©2024 Genuin Biotechnologies LLC

RT-qPCR analysis. HeLa cells were infected with ARNT-specific shRNA lentiviral particles, total RNA was extracted from wild-type and knockdown cells, RT-qPCR was performed using gene-specific primers. Δ Ct (Ct_{KD}-Ct_{WT}) was used to calculate mRNA reduction (%) between wild-type and knockdown cells using the following formula: $(1-1/2^{\Delta$ Ct) x 100%.



Copyright ©2024 Genuin Biotechnologies LLC

Western blotting analysis. ARNT protein expression in wild-type (WT) and shRNA knockdown (KD) HT-1080 cells was detected using Western blotting. GAPDH served as a loading control.

SUPPORT

SUPPORT@GENUINBIOTECH.COM
TEL: +1-540-855-7041

ORDERS

SALES@GENUINBIOTECH.COM
FAX: +1-540-855-7041

WWW.GENUINBIOTECH.COM

Human ARNT Knockdown Cell Line (WB-Validated)

PAGE 3

The blots were incubated with primary antibodies (Cat#69657, 1:5,000) against ARN and GAPDH, respectively, followed by incubating with HRP-conjugated goat anti-rabbit secondary antibody (Cat#201, 1:20,000). Images were developed using FeQ™ ECL Substrate Kit (Cat#226).

SUPPORT

SUPPORT@GENUINBIOTECH.COM
TEL: +1-540-855-7041

ORDERS

SALES@GENUINBIOTECH.COM
FAX: +1-540-855-7041

WWW.GENUINBIOTECH.COM