

# Human TFE3 Knockdown Cell Line (WB-Validated)



**Catalog #: C69680**

## Aliases

TFE3; Transcription Factor Binding To IGHM Enhancer 3; BHLHe33; TFEA; Class E Basic Helix-Loop-Helix Protein 33; Transcription Factor E3; Transcription Factor For Immunoglobulin Heavy-Chain Enhancer 3; Transcription Factor E Family, Member A; Transcription Factor For IgH Enhancer; BHLHE33; MRXSPF; RCCP2; RCCX1

## Background

Gene Name: TFE3

NCBI Gene Entry: [7030](#)

## Storage

Store at liquid nitrogen for 1 year.

## Kit Components

1. Human TFE3 Knockdown Cell Line (Wb-Validated)
2. Wild-type cell line

## Parental Cell Line

Human cell line supplied by the client

## Validation Methods

RT-qPCR, Western blotting (WB)

## Shipping

Shipped on Dry Ice.

## Instructions For Use

This knockdown cell line should be paired with wild-type cell line for use.

**Note:** This product is for research use only.

## Validation Data

---

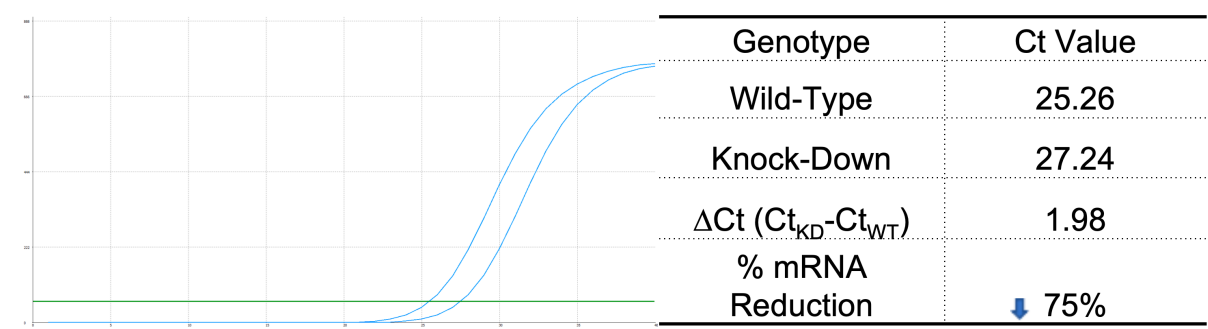
### SUPPORT

SUPPORT@GENUINBIOTECH.COM  
TEL: +1-540-855-7041

### ORDERS

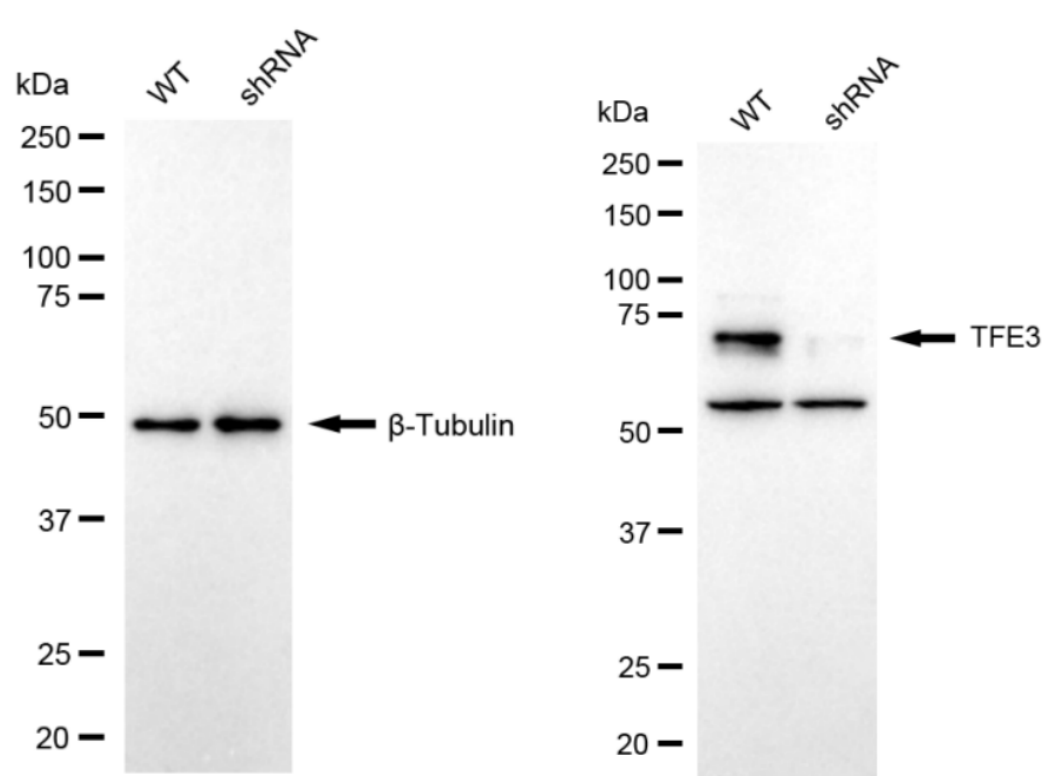
SALES@GENUINBIOTECH.COM  
FAX: +1-540-855-7041

[WWW.GENUINBIOTECH.COM](http://WWW.GENUINBIOTECH.COM)



Copyright ©2025 Genuin Biotechnologies LLC

RT-qPCR analysis. HeLa cells were infected with TFE3-specific shRNA lentiviral particles, total RNA was extracted from wild-type and knockdown cells, RT-qPCR was performed using gene-specific primers.  $\Delta Ct (Ct_{KD} - Ct_{WT})$  was used to calculate mRNA reduction (%) between wild-type and knockdown cells using the following formula:  $(1 - 1/2^{\Delta Ct}) \times 100\%$ .



Copyright ©2024 Genuin Biotechnologies LLC

Western blotting analysis. TFE3 protein expression in wild-type (WT) and shRNA knockdown (KD) HeLa cells was detected using Western blotting.  $\beta$ -Tubulin served as a loading control. The blots were incubated with primary antibodies against TFE3 and  $\beta$ -Tubulin, respectively, followed by incubating with HRP-conjugated goat anti-rabbit secondary antibody. Images were developed using FeQ™ ECL Substrate Kit.