

Human ATG4C Knockdown Cell Line (WB-Validated)



Catalog #: C69734

Aliases

ATG4C; Autophagy Related 4C Cysteine Peptidase; AUTL3; APG4C; AUTL1; Autophagy-Related Cysteine Endopeptidase 3; Autophagy-Related Protein 4 Homolog C; AUT-Like 3 Cysteine Endopeptidase; Cysteine Protease ATG4C; Autophagin-3; FLJ14867; HsAPG4C; AUT (S. Cerevisiae)-Like 1, Cysteine Endopeptidase; AUT-Like 1, Cysteine Endopeptidase (S. Cerevisiae); ATG4 Autophagy Related 4 Homolog C (S. Cerevisiae); APG4 Autophagy 4 Homolog C (S. Cerevisiae); Epididymis Secretory Sperm Binding Protein; Autophagy Related 4C, Cysteine Peptidase; ATG4 Autophagy Related 4 Homolog C; AUT-Like 1, Cysteine; Endopeptidase; APG4 Autophagy 4 Homolog C; EC 3.4.22.-; EC 3.4.22; APG4-C

Background

Gene Name: ATG4C

NCBI Gene Entry: [84938](#)

Storage

Store at liquid nitrogen for 1 year.

Kit Components

1. Human ATG4C Knockdown Cell Line (Wb-Validated)
2. Wild-type cell line

Parental Cell Line

Human cell line supplied by the client

Validation Methods

RT-qPCR, Western blotting (WB)

Shipping

Shipped on Dry Ice.

Instructions For Use

This knockdown cell line should be paired with wild-type cell line for use.

Note: This product is for research use only.

Validation Data

SUPPORT

SUPPORT@GENUINBIOTECH.COM
TEL: +1-540-855-7041

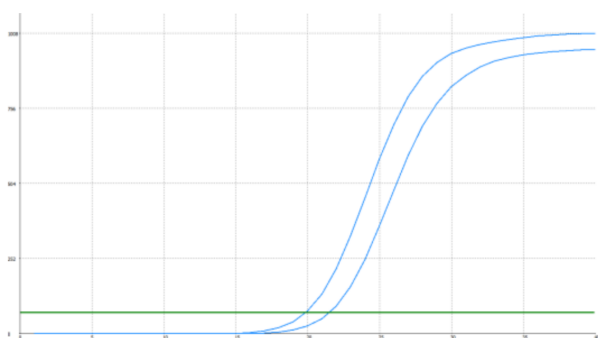
ORDERS

SALES@GENUINBIOTECH.COM
FAX: +1-540-855-7041

WWW.GENUINBIOTECH.COM

Human ATG4C Knockdown Cell Line (WB-Validated)

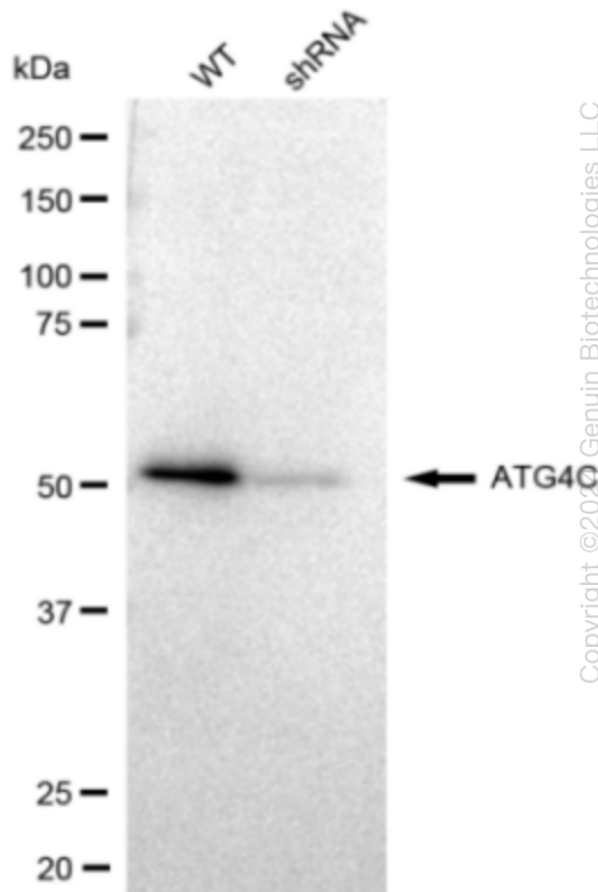
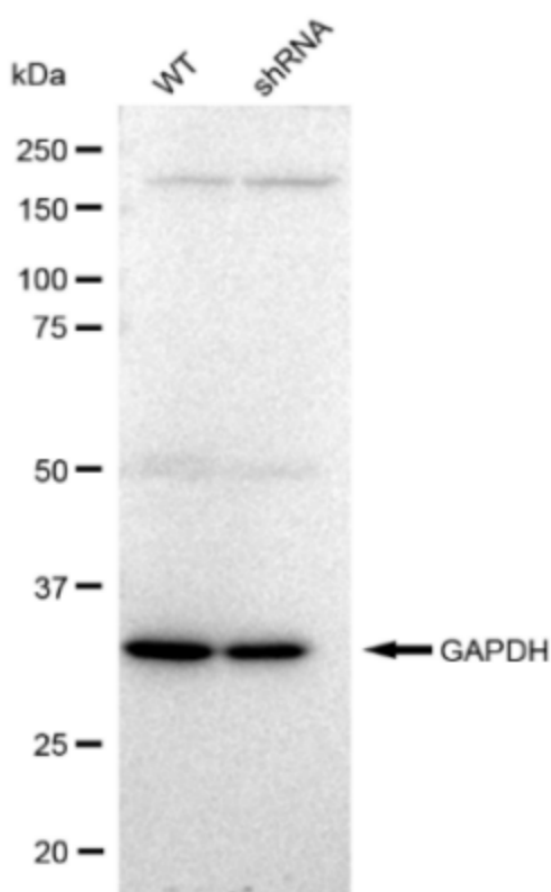
PAGE 2



Genotype	Ct Value
Wild-Type	19.89
Knock-Down	21.40
$\Delta Ct (Ct_{KD} - Ct_{WT})$	1.51
% mRNA Reduction	↓ 65%

Copyright ©2024 Genuin Biotechnologies LLC

RT-qPCR analysis. HeLa cells were infected with ATG4C-specific shRNA lentiviral particles, total RNA was extracted from wild-type and knockdown cells, RT-qPCR was performed using gene-specific primers. $\Delta Ct (Ct_{KD} - Ct_{WT})$ was used to calculate mRNA reduction (%) between wild-type and knockdown cells using the following formula: $(1 - 1/2^{\Delta Ct}) \times 100\%$.



Copyright ©2024 Genuin Biotechnologies LLC

Western blotting analysis. ATG4C protein expression in wild-type (WT) and shRNA knockdown (KD) HeLa cells was detected using Western blotting. GAPDH served as a loading control. The blots were incubated with primary antibodies (Cat#61741, 1:10,000) against ATG4C and GAPDH,

SUPPORT

SUPPORT@GENUINBIOTECH.COM
TEL: +1-540-855-7041

ORDERS

SALES@GENUINBIOTECH.COM
FAX: +1-540-855-7041

WWW.GENUINBIOTECH.COM

respectively, followed by incubating with HRP-conjugated goat anti-rabbit secondary antibody (Cat#201, 1:20,000). Images were developed using FeQ™ ECL Substrate Kit (Cat#226).