

Human CUL1 Knockdown Cell Line (WB-Validated)



Catalog #: C69741

Aliases

CUL1; Cullin 1; Cullin-1; CUL-1

Background

Gene Name: CUL1

NCBI Gene Entry: [8454](#)

Storage

Store at liquid nitrogen for 1 year.

Kit Components

1. Human CUL1 Knockdown Cell Line (Wb-Validated)
2. Wild-type cell line

Parental Cell Line

Human cell line supplied by the client

Validation Methods

RT-qPCR, Western blotting (WB)

Shipping

Shipped on Dry Ice.

Instructions For Use

This knockdown cell line should be paired with wild-type cell line for use.

Note: This product is for research use only.

Validation Data

SUPPORT

SUPPORT@GENUINBIOTECH.COM
TEL: +1-540-855-7041

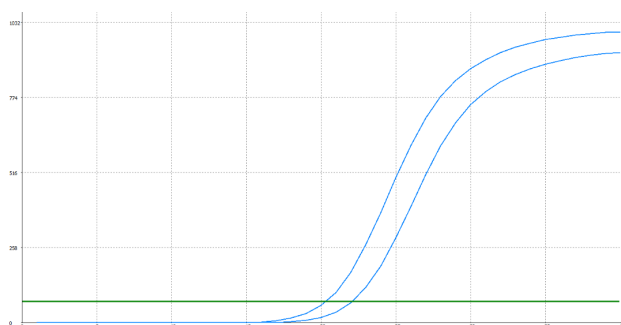
ORDERS

SALES@GENUINBIOTECH.COM
FAX: +1-540-855-7041

WWW.GENUINBIOTECH.COM

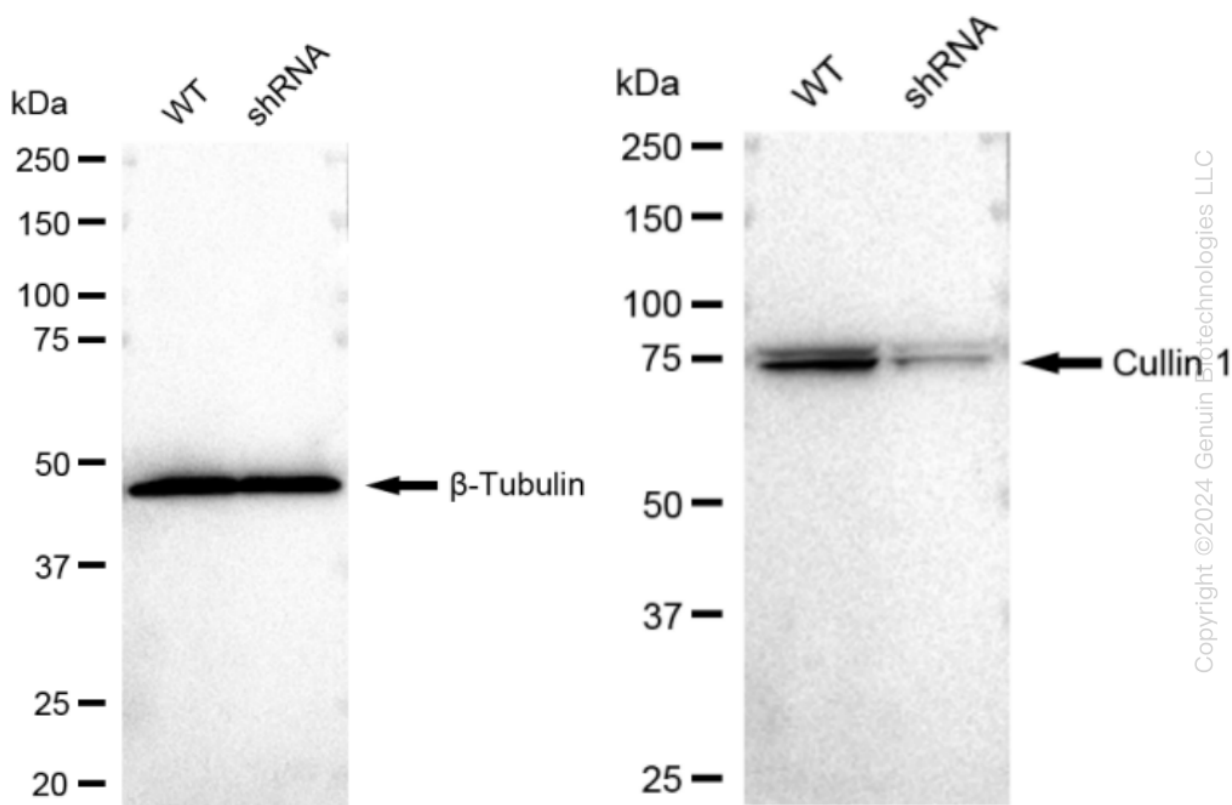
Human CUL1 Knockdown Cell Line (WB-Validated)

PAGE 2



Genotype	Ct Value
Wild-Type	20.27
Knock-Down	21.91
$\Delta Ct (Ct_{KD}-Ct_{WT})$	1.64
% mRNA Reduction	↓ 68%

RT-qPCR analysis. 293T cells were infected with CUL1-specific shRNA lentiviral particles, total RNA was extracted from wild-type and knockdown cells, RT-qPCR was performed using gene-specific primers. $\Delta Ct (Ct_{KD}-Ct_{WT})$ was used to calculate mRNA reduction (%) between wild-type and knockdown cells using the following formula: $(1-1/2^{\Delta Ct}) \times 100\%$.



Western blotting analysis. CUL1 protein expression in wild-type (WT) and shRNA knockdown (KD) 293T cells was detected using Western blotting. β -Tubulin served as a loading control. The blots were incubated with primary antibodies against CUL1 and β -Tubulin, respectively, followed by incubating with HRP-conjugated goat anti-rabbit secondary antibody. Images were developed using FeQ™ ECL Substrate Kit.

SUPPORT

SUPPORT@GENUINBIOTECH.COM
TEL: +1-540-855-7041

ORDERS

SALES@GENUINBIOTECH.COM
FAX: +1-540-855-7041

WWW.GENUINBIOTECH.COM