

Human EZH2 Knockdown Cell Line (WB-Validated)



Catalog #: C69932

Aliases

Enhancer Of Zeste 2 Polycomb Repressive Complex 2 Subunit; ENX-1; KMT6; KMT6A; Histone-Lysine N-Methyltransferase EZH2; Lysine N-Methyltransferase 6; Enhancer Of Zeste Homolog 2; EZH1; Enhancer Of Zeste (Drosophila) Homolog 2; Enhancer Of Zeste Homolog 2 (Drosophila); EC 2.1.1.356; EC 2.1.1.43; EC 2.1.1; EZH2b; ENX1; WVS2; WVS

Background

Gene Name: EZH2

NCBI Gene Entry: [2146](#)

Storage

Store at liquid nitrogen for 1 year.

Kit Components

1. Human EZH2 Knockdown Cell Line (Wb-Validated)
2. Wild-type cell line

Parental Cell Line

Human cell line supplied by the client

Validation Methods

RT-qPCR, Western blotting (WB)

Shipping

Shipped on Dry Ice.

Instructions For Use

This knockdown cell line should be paired with wild-type cell line for use.

Note: This product is for research use only.

Validation Data

SUPPORT

SUPPORT@GENUINBIOTECH.COM
TEL: +1-540-855-7041

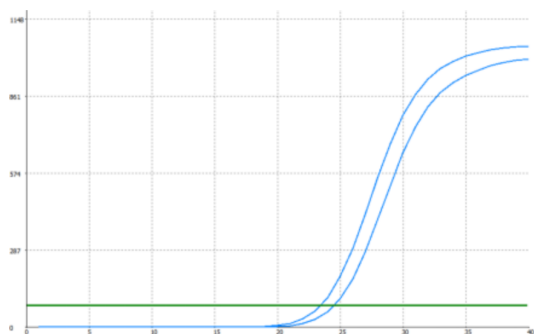
ORDERS

SALES@GENUINBIOTECH.COM
FAX: +1-540-855-7041

WWW.GENUINBIOTECH.COM

Human EZH2 Knockdown Cell Line (WB-Validated)

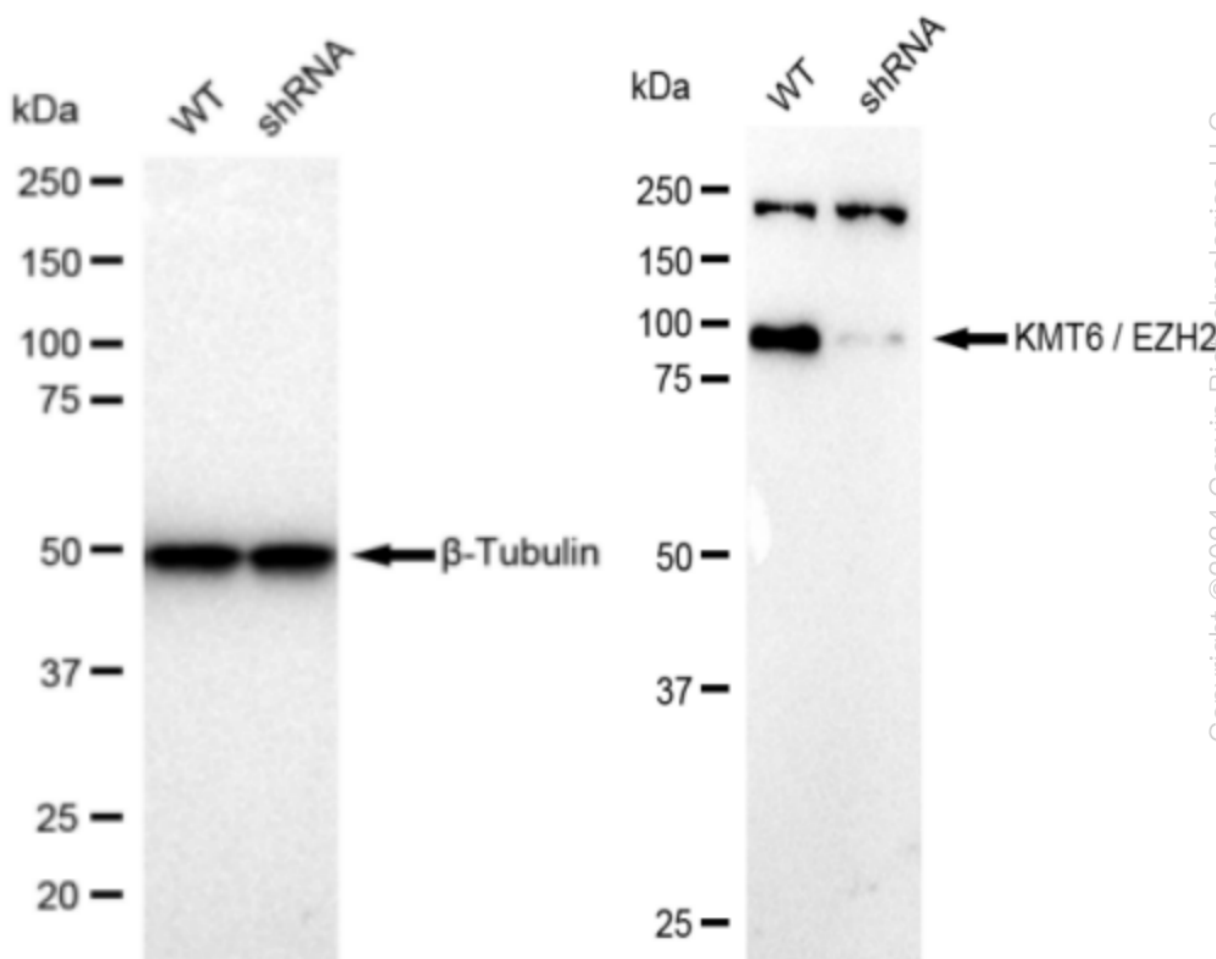
PAGE 2



| Genotype | Ct Value |
|-------------------------------------|----------|
| Wild-Type | 23.27 |
| Knock-Down | 24.26 |
| ΔCt ($Ct_{KD} - Ct_{WT}$) | 0.99 |
| % mRNA Reduction | ↓ 50% |

Copyright ©2024 Genuin Biotechnologies LLC

RT-qPCR analysis. HeLa cells were infected with EZH2-specific shRNA lentiviral particles, total RNA was extracted from wild-type and knockdown cells, RT-qPCR was performed using gene-specific primers. ΔCt ($Ct_{KD} - Ct_{WT}$) was used to calculate mRNA reduction (%) between wild-type and knockdown cells using the following formula: $(1 - 1/2^{\Delta Ct}) \times 100\%$.



Copyright ©2024 Genuin Biotechnologies LLC

Western blotting analysis. EZH2 protein expression in wild-type (WT) and shRNA knockdown (KD) HeLa cells was detected using Western blotting. β -Tubulin served as a loading control. The blots were incubated with primary antibodies (Cat#69932, 1:10,000) against EZH2 and β -Tubulin,

SUPPORT

SUPPORT@GENUINBIOTECH.COM
TEL: +1-540-855-7041

ORDERS

SALES@GENUINBIOTECH.COM
FAX: +1-540-855-7041

WWW.GENUINBIOTECH.COM

respectively, followed by incubating with HRP-conjugated goat anti-rabbit secondary antibody (Cat#201, 1:20,000). Images were developed using FeQ™ ECL Substrate Kit (Cat#226).