

Human CHD3 Knockdown Cell Line (WB-Validated)



Catalog #: C7323

Aliases

CHD3; Chromodomain Helicase DNA Binding Protein 3; ZFH; Chromodomain-Helicase-DNA-Binding Protein 3; Mi-2 Autoantigen 240 KDa Protein; ATP-Dependent Helicase CHD3; Zinc Finger Helicase; Mi2-ALPHA; Mi-2a; CHD-3; HZFH; Zinc-Finger Helicase (Snf2-Like); EC 3.6.4.12; MI2-ALPHA; Mi2-Alpha; EC 3.6.1; SNIBCPS; MI-2A

Background

Gene Name: CHD3

NCBI Gene Entry: [1107](#)

Storage

Store at liquid nitrogen for 1 year.

Kit Components

1. Human CHD3 Knockdown Cell Line (Wb-Validated)
2. Wild-type cell line

Parental Cell Line

Human cell line supplied by the client

Validation Methods

RT-qPCR, Western blotting (WB)

Shipping

Shipped on Dry Ice.

Instructions For Use

This knockdown cell line should be paired with wild-type cell line for use.

Note: This product is for research use only.

Validation Data

SUPPORT

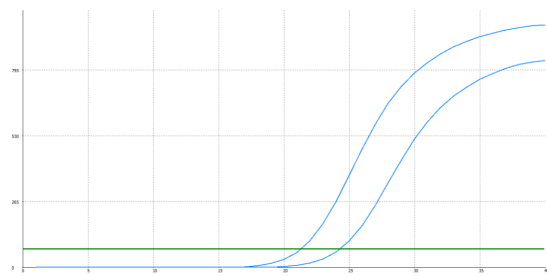
SUPPORT@GENUINBIOTECH.COM
TEL: +1-540-855-7041

ORDERS

SALES@GENUINBIOTECH.COM
FAX: +1-540-855-7041

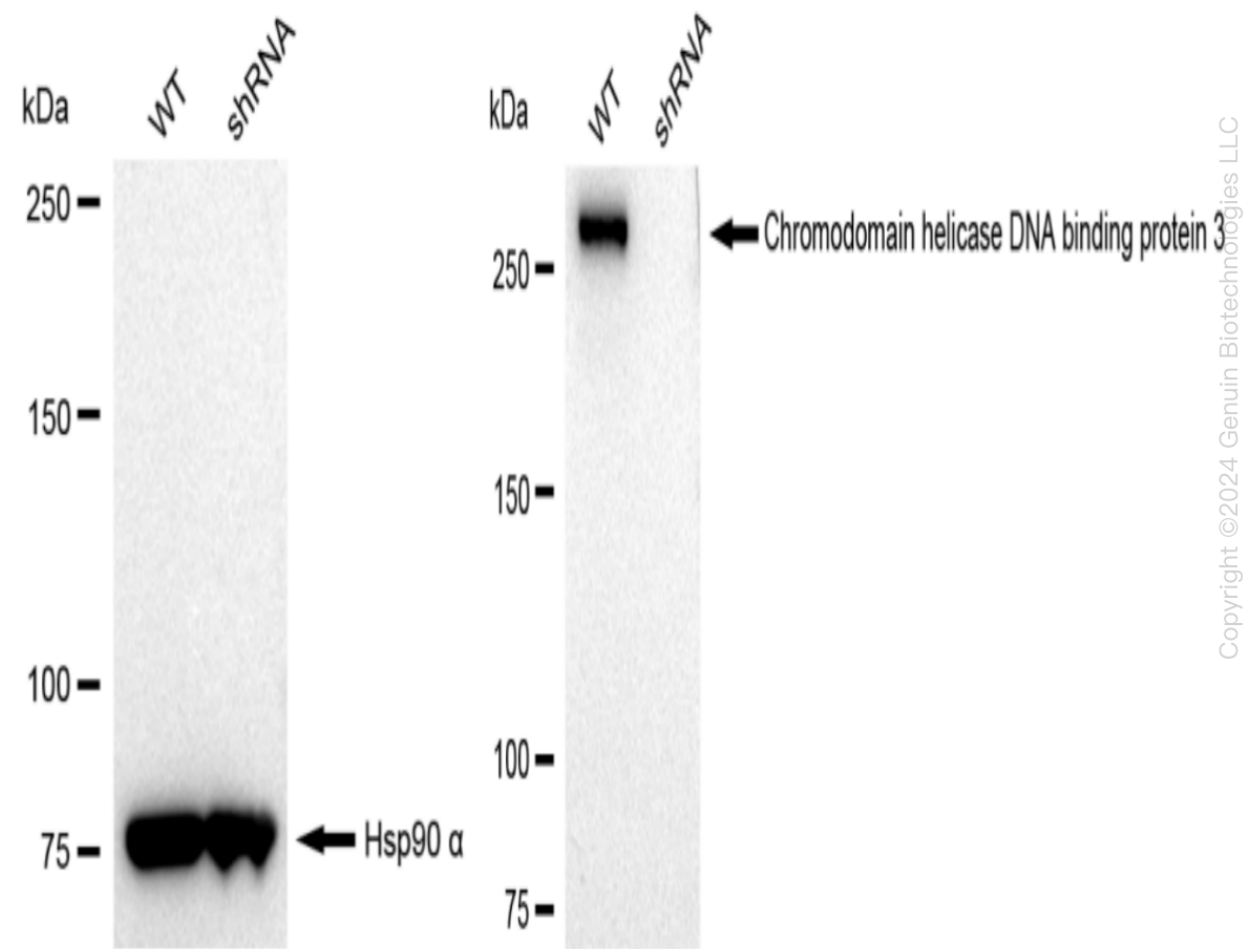
WWW.GENUINBIOTECH.COM

Human CHD3 Knockdown Cell Line (WB-Validated)



Genotype	Ct Value
Wild-Type	21.19
Knock-Down	23.92
$\Delta Ct (Ct_{KD}-Ct_{WT})$	2.73
% mRNA Reduction	↓ 85%

RT-qPCR analysis. HeLa cells were infected with CHD3-specific shRNA lentiviral particles, total RNA was extracted from wild-type and knockdown cells, RT-qPCR was performed using gene-specific primers. $\Delta Ct (Ct_{KD}-Ct_{WT})$ was used to calculate mRNA reduction (%) between wild-type and knockdown cells using the following formula: $(1-1/2^{\Delta Ct}) \times 100\%$.



Western blotting analysis. CHD3 protein expression in wild-type (WT) and shRNA knockdown (KD) HeLa cells was detected using Western blotting. Hsp90 α served as a loading control. The

SUPPORT

SUPPORT@GENUINBIOTECH.COM
TEL: +1-540-855-7041

ORDERS

SALES@GENUINBIOTECH.COM
FAX: +1-540-855-7041

WWW.GENUINBIOTECH.COM

Human CHD3 Knockdown Cell Line (WB-Validated)

PAGE 3

blots were incubated with primary antibodies (Cat#67323, 1:5,000) against CHD3 and Hsp90 α , respectively, followed by incubating with HRP-conjugated goat anti-rabbit secondary antibody (Cat#201, 1:20,000). Images were developed using FeQ™ ECL Substrate Kit (Cat#226).

SUPPORT

SUPPORT@GENUINBIOTECH.COM
TEL: +1-540-855-7041

ORDERS

SALES@GENUINBIOTECH.COM
FAX: +1-540-855-7041

WWW.GENUINBIOTECH.COM