

Human SMAD2 Knockdown Cell Line (WB-Validated)



Catalog #: C7522

Aliases

SMAD2; SMAD Family Member 2; JV18-1; MADR2; MADH2; Mothers Against Decapentaplegic Homolog 2; MAD Homolog 2; HMAD-2; HSMAD2; MAD, Mothers Against Decapentaplegic Homolog 2 (Drosophila); SMAD, Mothers Against DPP Homolog 2 (Drosophila); SMAD, Mothers Against DPP Homolog 2; Sma- And Mad-Related Protein 2; Mothers Against DPP Homolog 2; Mother Against DPP Homolog 2; Mad-Related Protein 2; SMAD 2; CHTD8; Smad2; JV18; LDS6

Background

Gene Name: SMAD2

NCBI Gene Entry: [4087](#)

Storage

Store at liquid nitrogen for 1 year.

Kit Components

1. Human SMAD2 Knockdown Cell Line (Wb-Validated)
2. Wild-type cell line

Parental Cell Line

Human cell line supplied by the client

Validation Methods

RT-qPCR, Western blotting (WB)

Shipping

Shipped on Dry Ice.

Instructions For Use

This knockdown cell line should be paired with wild-type cell line for use.

Note: This product is for research use only.

Validation Data

SUPPORT

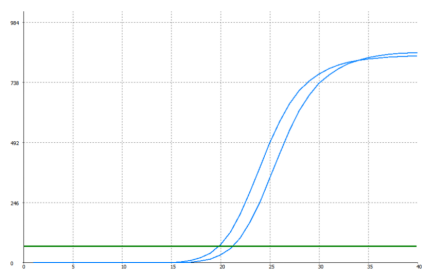
SUPPORT@GENUINBIOTECH.COM
TEL: +1-540-855-7041

ORDERS

SALES@GENUINBIOTECH.COM
FAX: +1-540-855-7041

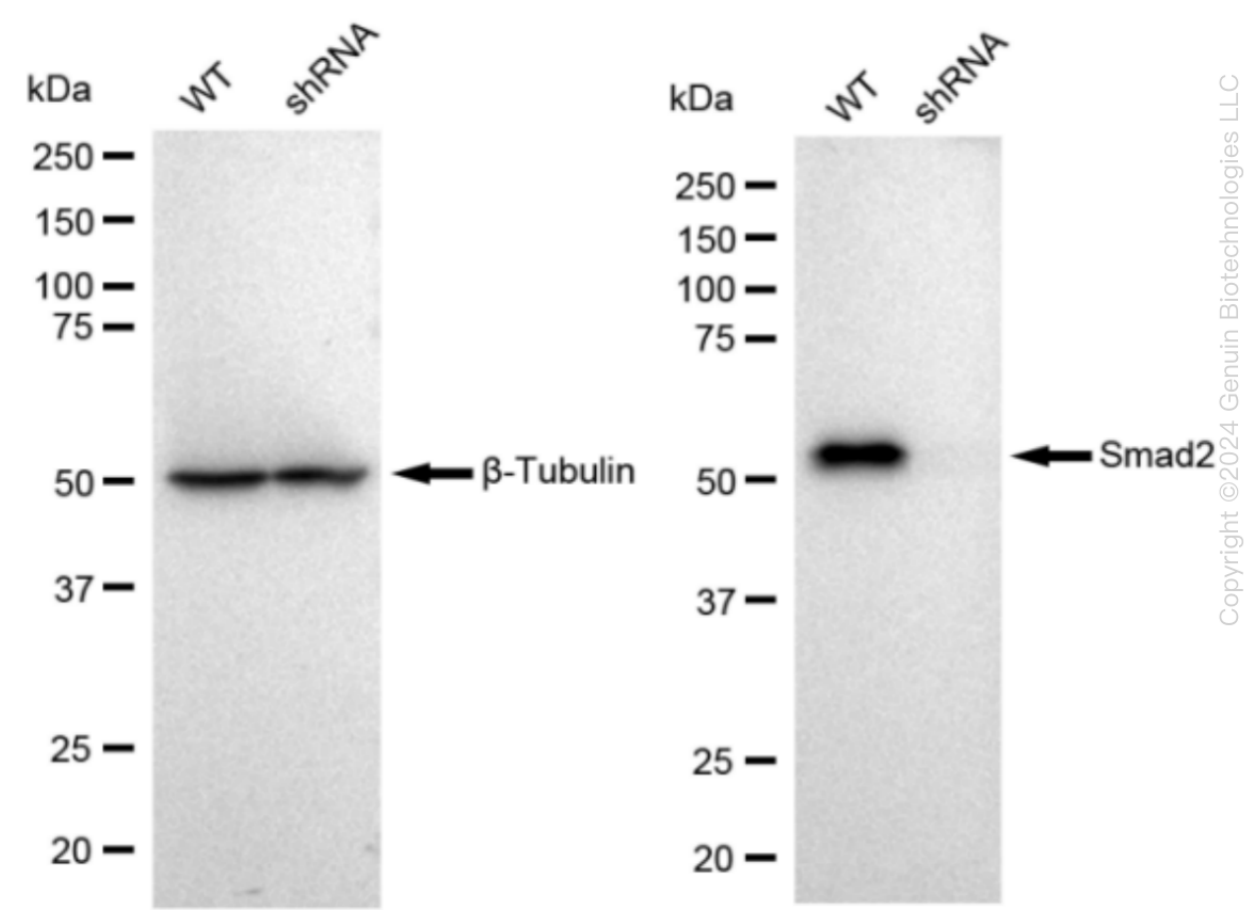
WWW.GENUINBIOTECH.COM

Human SMAD2 Knockdown Cell Line (WB-Validated)



Genotype	Ct Value
Wild-Type	19.57
Knock-Down	21.06
$\Delta Ct (Ct_{KD}-Ct_{WT})$	1.49
% mRNA Reduction	↓ 64%

RT-qPCR analysis. HT-1080 cells were infected with SMAD2-specific shRNA lentiviral particles, total RNA was extracted from wild-type and knockdown cells, RT-qPCR was performed using gene-specific primers. $\Delta Ct (Ct_{KD}-Ct_{WT})$ was used to calculate mRNA reduction (%) between wild-type and knockdown cells using the following formula: $(1-1/2^{\Delta Ct}) \times 100\%$.



Western blotting analysis. SMAD2 protein expression in wild-type (WT) and shRNA knockdown (KD) HT-1080 cells was detected using Western blotting. Beta-TUBULIN served as a loading

SUPPORT

SUPPORT@GENUINBIOTECH.COM
TEL: +1-540-855-7041

ORDERS

SALES@GENUINBIOTECH.COM
FAX: +1-540-855-7041

WWW.GENUINBIOTECH.COM

control. The blots were incubated with primary antibodies (Cat#69512, 1:5,000) against SMAD2 and Beta-TUBULIN, respectively, followed by incubating with HRP-conjugated goat anti-rabbit secondary antibody (Cat#201, 1:20,000). Images were developed using FeQ™ ECL Substrate Kit (Cat#226).