

# Human SMAD4 Knockdown Cell Line (WB-Validated)



**Catalog #: C7524**

## Aliases

DPC4; MADH4; Mothers Against Decapentaplegic Homolog 4; Deletion Target In Pancreatic Carcinoma 4; MAD Homolog 4; MAD, Mothers Against Decapentaplegic Homolog 4 (Drosophila); Mothers Against Decapentaplegic, Drosophila, Homolog Of, 4; SMAD, Mothers Against DPP Homolog 4 (Drosophila); Deleted In Pancreatic Carcinoma Locus 4; SMAD, Mothers Against DPP Homolog 4; Mothers Against DPP Homolog 4; SMAD 4; HSMAD4; MYHRS; Smad4; JIP

## Background

Gene Name: SMAD4

NCBI Gene Entry: [4089](#)

## Storage

Store at liquid nitrogen for 1 year.

## Kit Components

1. Human SMAD4 Knockdown Cell Line (Wb-Validated)
2. Wild-type cell line

## Parental Cell Line

Human cell line supplied by the client

## Validation Methods

RT-qPCR, Western blotting (WB)

## Shipping

Shipped on Dry Ice.

## Instructions For Use

This knockdown cell line should be paired with wild-type cell line for use.

**Note:** This product is for research use only.

## Validation Data

---

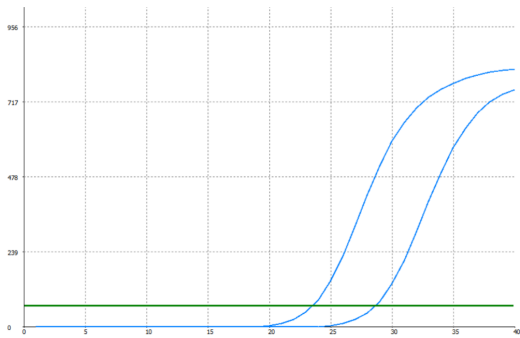
### SUPPORT

SUPPORT@GENUINBIOTECH.COM  
TEL: +1-540-855-7041

### ORDERS

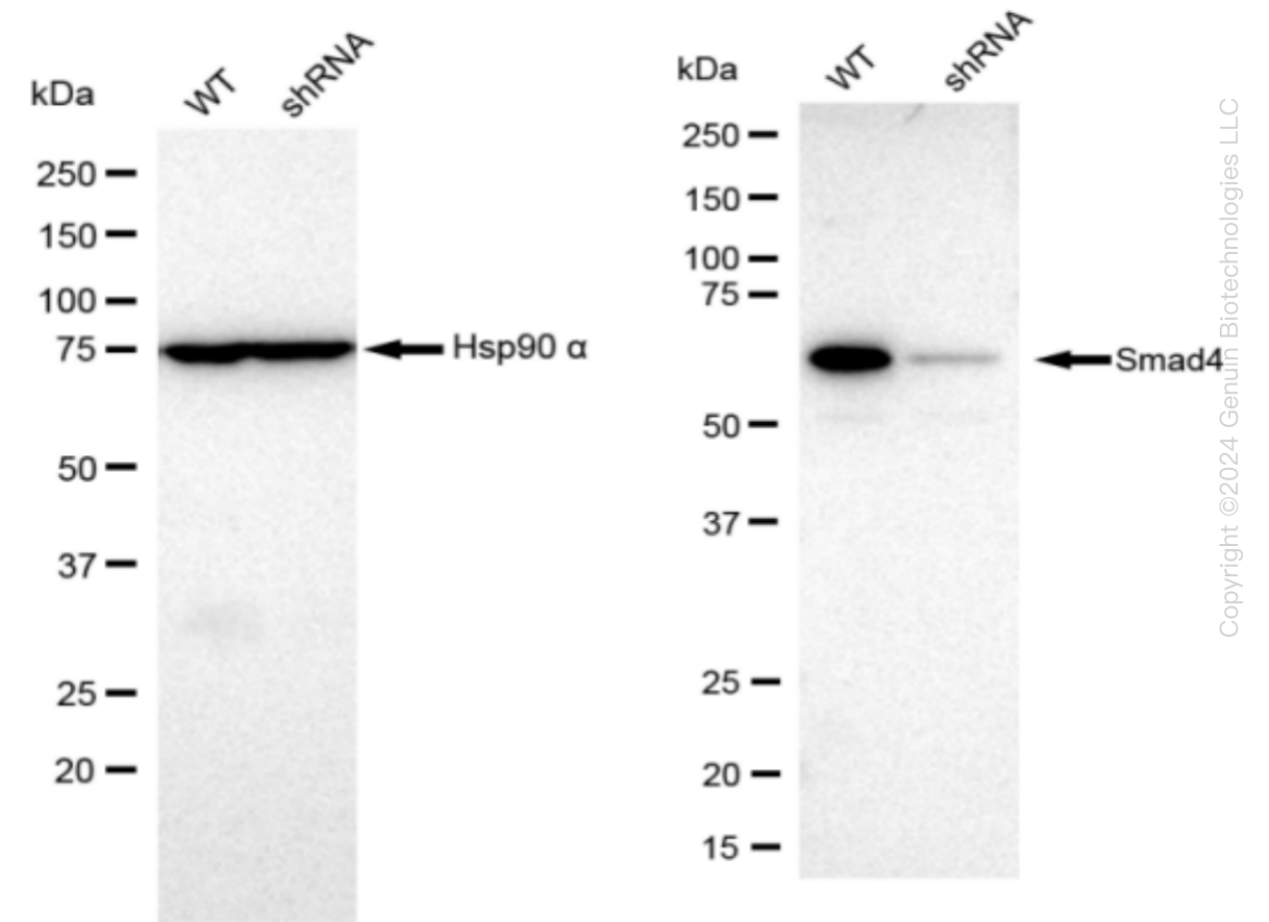
SALES@GENUINBIOTECH.COM  
FAX: +1-540-855-7041

[WWW.GENUINBIOTECH.COM](http://WWW.GENUINBIOTECH.COM)



Genotype	Ct Value
Wild-Type	23.27
Knock-Down	28.23
$\Delta Ct$ (Ct <sub>KD</sub> -Ct <sub>WT</sub> )	4.96
% mRNA Reduction	↓ 97%

RT-qPCR analysis. HeLa cells were infected with SMAD4-specific shRNA lentiviral particles, total RNA was extracted from wild-type and knockdown cells, RT-qPCR was performed using gene-specific primers.  $\Delta Ct$  (Ct<sub>KD</sub>-Ct<sub>WT</sub>) was used to calculate mRNA reduction (%) between wild-type and knockdown cells using the following formula:  $(1-1/2^{\Delta Ct}) \times 100\%$ .



Western blotting analysis. SMAD4 protein expression in wild-type (WT) and shRNA knockdown

## **Human SMAD4 Knockdown Cell Line (WB-Validated)**

PAGE 3

(KD) HT-1080 cells was detected using Western blotting. HSP90-alpha served as a loading control. The blots were incubated with primary antibodies (Cat#67514, 1:5,000) against SMAD4 and HSP90-alpha, respectively, followed by incubating with HRP-conjugated goat anti-rabbit secondary antibody (Cat#201, 1:20,000). Images were developed using FeQ™ ECL Substrate Kit (Cat#226).

---

### **SUPPORT**

SUPPORT@GENUINBIOTECH.COM  
TEL: +1-540-855-7041

### **ORDERS**

SALES@GENUINBIOTECH.COM  
FAX: +1-540-855-7041

**WWW.GENUINBIOTECH.COM**