

Human IRAK3 Knockdown Cell Line (WB-Validated)



Catalog #: C83614

Aliases

IRAK3; Interleukin 1 Receptor Associated Kinase 3; Interleukin-1 Receptor-Associated Kinase 3; IRAK-M □ Inactive IL-1 Receptor-Associated Kinase 3; IL-1 Receptor-Associated Kinase M; IRAK-3; ASRT5; IRAKM

Background

Gene Name: IRAK3

NCBI Gene Entry: [11213](#)

Storage

Store at liquid nitrogen for 1 year.

Kit Components

1. Human IRAK3 Knockdown Cell Line (Wb-Validated)
2. Wild-type cell line

Parental Cell Line

Human cell line supplied by the client

Validation Methods

RT-qPCR, Western blotting (WB)

Shipping

Shipped on Dry Ice.

Instructions For Use

This knockdown cell line should be paired with wild-type cell line for use.

Note: This product is for research use only.

Validation Data

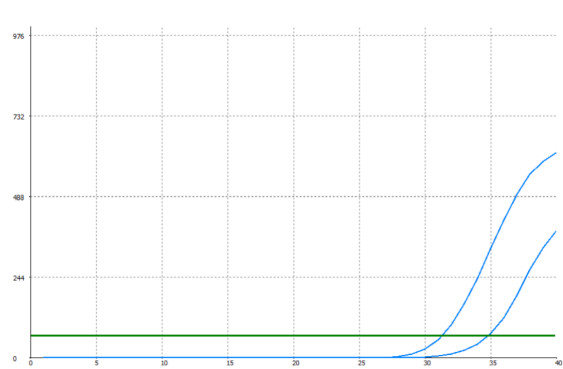
SUPPORT

SUPPORT@GENUINBIOTECH.COM
TEL: +1-540-855-7041

ORDERS

SALES@GENUINBIOTECH.COM
FAX: +1-540-855-7041

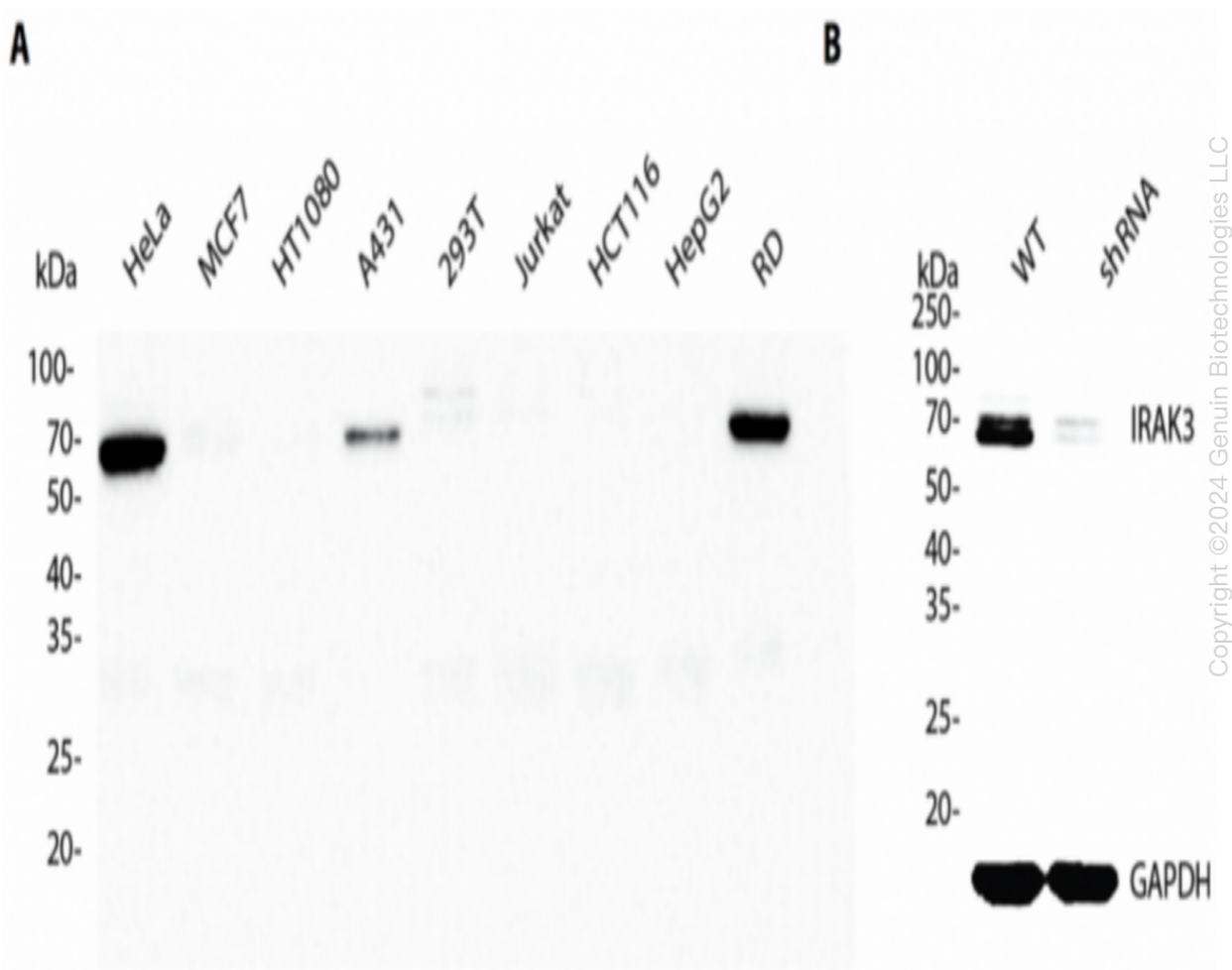
WWW.GENUINBIOTECH.COM



| Genotype | Ct Value |
|-------------------------------|----------|
| Wild-Type | 30.61 |
| Knock-Down | 33.24 |
| $\Delta Ct (Ct_{KD}-Ct_{WT})$ | 2.63 |
| % mRNA Reduction | ↓ 84% |

Copyright ©2024 Genuin Biotechnologies LLC

RT-qPCR analysis. HeLa cells were infected with IRAK3-specific shRNA lentiviral particles, total RNA was extracted from wild-type and knockdown cells, RT-qPCR was performed using gene-specific primers. $\Delta Ct (Ct_{KD}-Ct_{WT})$ was used to calculate mRNA reduction (%) between wild-type and knockdown cells using the following formula: $(1-1/2^{\Delta Ct}) \times 100\%$.



Copyright ©2024 Genuin Biotechnologies LLC

Western blotting analysis. IRAK3 protein expression in wild-type (WT) and shRNA knockdown (KD) HeLa cells was detected using Western blotting. GAPDH served as a loading control. The

Human IRAK3 Knockdown Cell Line (WB-Validated)

PAGE 3

blots were incubated with primary antibodies (Cat#63613, 1:5,000) against IRAK3 and GAPDH, respectively, followed by incubating with HRP-conjugated goat anti-rabbit secondary antibody (Cat#201, 1:20,000). Images were developed using FeQ™ ECL Substrate Kit (Cat#226).

SUPPORT

SUPPORT@GENUINBIOTECH.COM
TEL: +1-540-855-7041

ORDERS

SALES@GENUINBIOTECH.COM
FAX: +1-540-855-7041

WWW.GENUINBIOTECH.COM