

Human USP7 Knockdown Cell Line (WB-Validated)



Catalog #: C87767

Aliases

USP7; Ubiquitin Specific Peptidase 7; HAUSP; Ubiquitin Specific Peptidase 7 (Herpes Virus-Associated); Ubiquitin-Specific-Processing Protease 7; Ubiquitin Carboxyl-Terminal Hydrolase 7; Deubiquitinating Enzyme 7; Ubiquitin Thioesterase 7; Ubiquitin Specific Protease 7 (Herpes Virus-Associated); Herpes Virus-Associated Ubiquitin-Specific Protease; Herpesvirus-Associated; Ubiquitin-Specific Protease; Chromosome 16p13.2 Deletion Syndrome; EC 3.4.19.12; C16DELp13.2; EC 3.1.2.15; DEL16P13.2; HAFOUS; TEF1

Background

Gene Name: USP7

NCBI Gene Entry: [7874](#)

Storage

Store at liquid nitrogen for 1 year.

Kit Components

1. Human USP7 Knockdown Cell Line (Wb-Validated)
2. Wild-type cell line

Parental Cell Line

Human cell line supplied by the client

Validation Methods

RT-qPCR, Western blotting (WB)

Shipping

Shipped on Dry Ice.

Instructions For Use

This knockdown cell line should be paired with wild-type cell line for use.

Note: This product is for research use only.

Validation Data

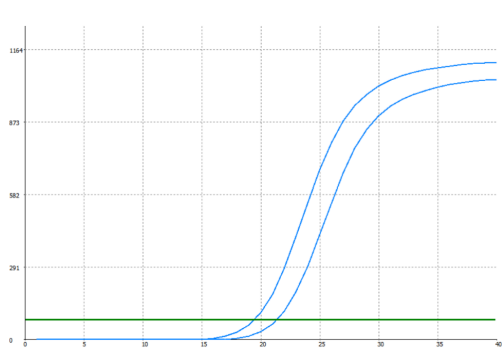
SUPPORT

SUPPORT@GENUINBIOTECH.COM
TEL: +1-540-855-7041

ORDERS

SALES@GENUINBIOTECH.COM
FAX: +1-540-855-7041

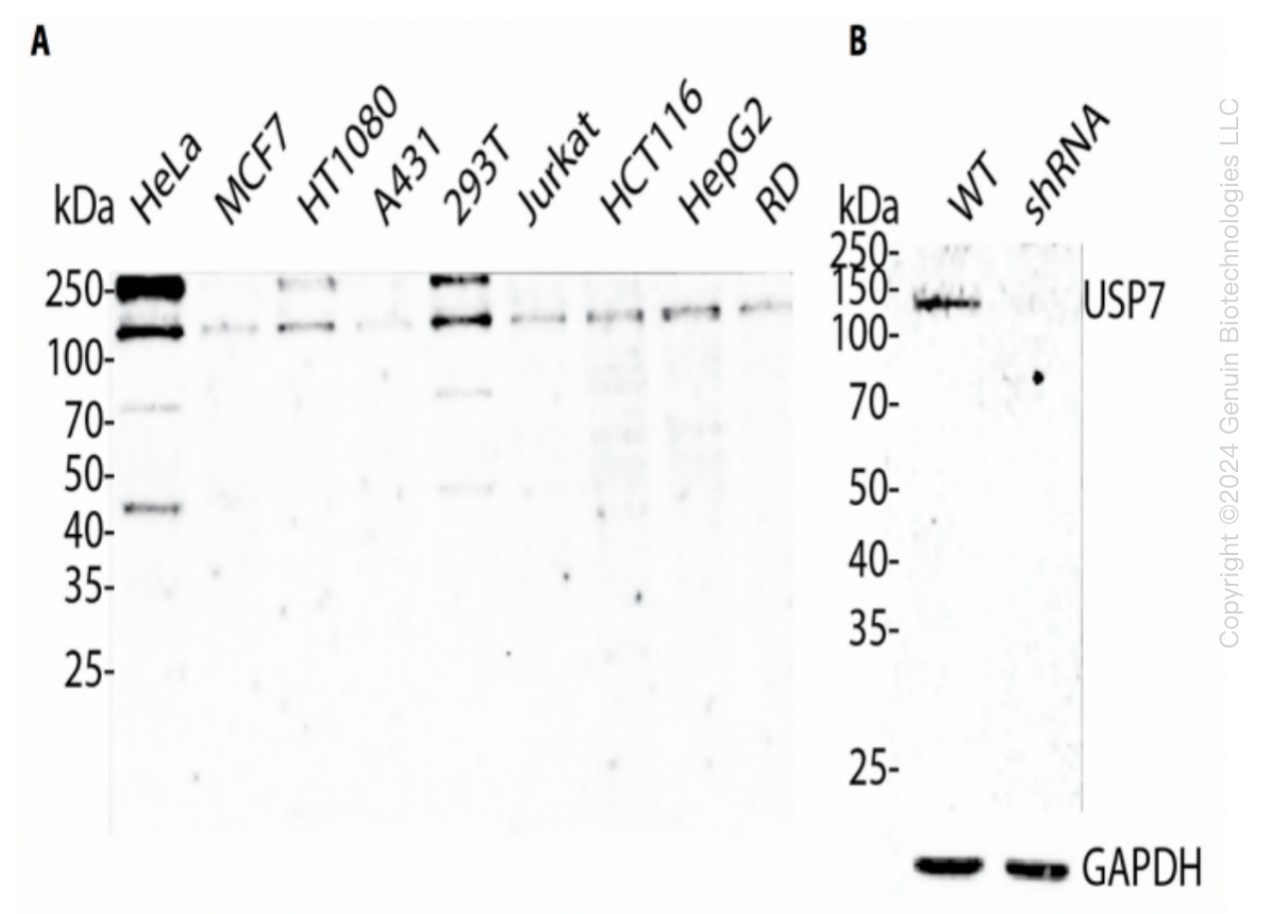
WWW.GENUINBIOTECH.COM



Genotype	Ct Value
Wild-Type	19.44
Knock-Down	21.21
$\Delta Ct (Ct_{KD}-Ct_{WT})$	1.77
% mRNA Reduction	↓71%

Copyright ©2024 Genuin Biotechnologies LLC

RT-qPCR analysis. HeLa cells were infected with USP7-specific shRNA lentiviral particles, total RNA was extracted from wild-type and knockdown cells, RT-qPCR was performed using gene-specific primers. $\Delta Ct (Ct_{KD}-Ct_{WT})$ was used to calculate mRNA reduction (%) between wild-type and knockdown cells using the following formula: $(1-1/2^{\Delta Ct}) \times 100\%$.



Copyright ©2024 Genuin Biotechnologies LLC

Western blotting analysis. USP7 protein expression in wild-type (WT) and shRNA knockdown

Human USP7 Knockdown Cell Line (WB-Validated)

PAGE 3

(KD) HeLa cells was detected using Western blotting. GAPDH served as a loading control. The blots were incubated with primary antibodies (Cat#61216, 1:5,000) against USP7 and GAPDH, respectively, followed by incubating with HRP-conjugated goat anti-rabbit secondary antibody (Cat#201, 1:20,000). Images were developed using FeQ™ ECL Substrate Kit (Cat#226).

SUPPORT

SUPPORT@GENUINBIOTECH.COM
TEL: +1-540-855-7041

ORDERS

SALES@GENUINBIOTECH.COM
FAX: +1-540-855-7041

WWW.GENUINBIOTECH.COM