

# Human APP Knockdown Cell Line (WB-Validated)



**Catalog #: C9660**

## Aliases

A4; AAA; ABETA; ABPP; AD1; AICD-50; AICD-57; AICD-59; AID(50); AID(57); AID(59); amyloid beta (A4) precursor protein; Amyloid beta A4 protein; CTFgamma ; PN 2;CD31; CVAP; APP

## Background

Gene Name: APP

NCBI Gene Entry: [351](#)

## Storage

Store at liquid nitrogen for 1 year.

## Kit Components

1. Human APP Knockdown Cell Line (Wb-Validated)
2. Wild-type cell line

## Parental Cell Line

Human cell line supplied by the client

## Validation Methods

RT-qPCR, Western blotting (WB)

## Shipping

Shipped on Dry Ice.

## Instructions For Use

This knockdown cell line should be paired with wild-type cell line for use.

**Note:** This product is for research use only.

## Validation Data

---

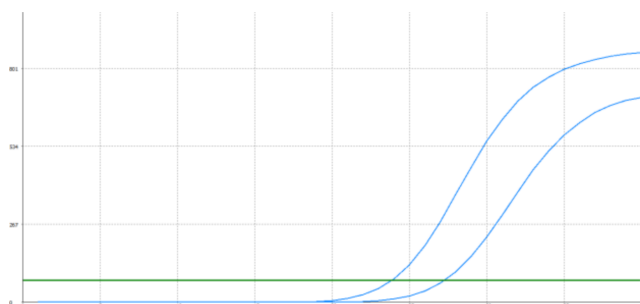
### SUPPORT

SUPPORT@GENUINBIOTECH.COM  
TEL: +1-540-855-7041

### ORDERS

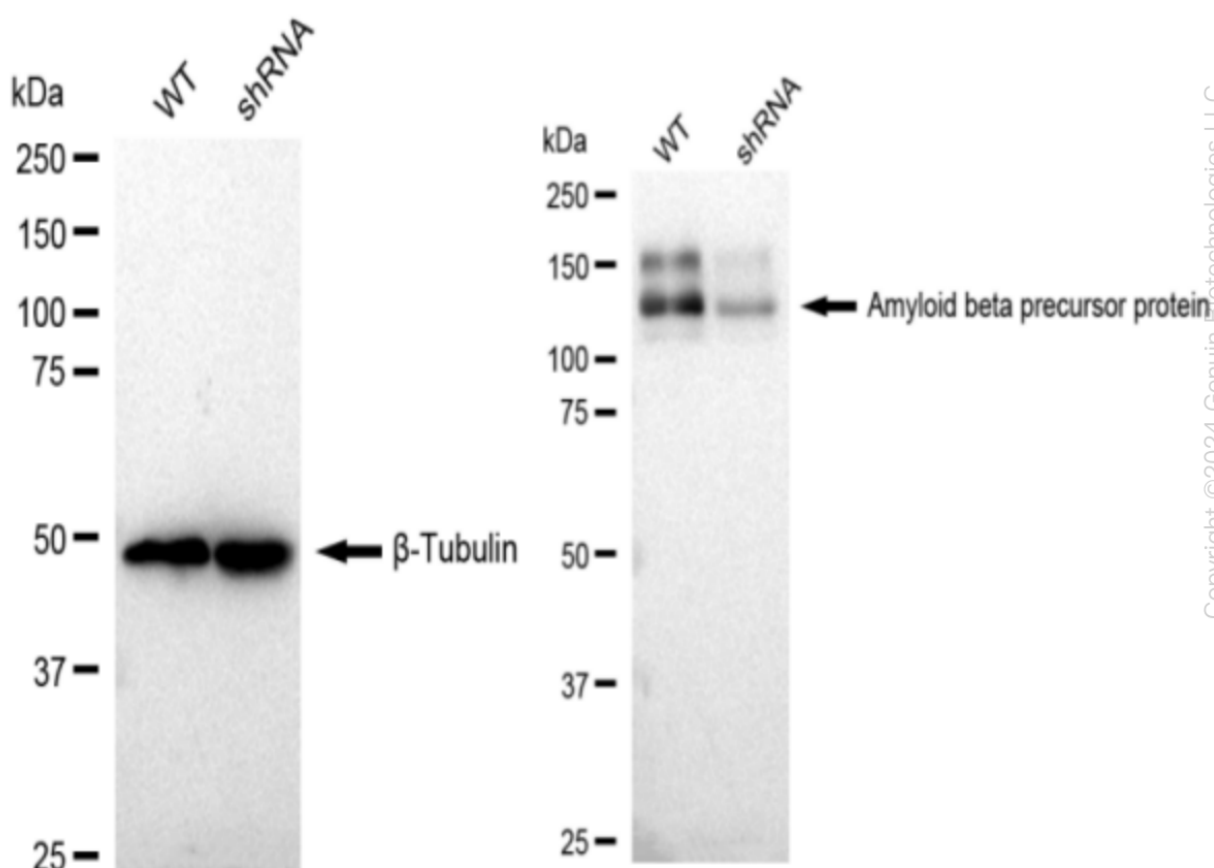
SALES@GENUINBIOTECH.COM  
FAX:+1-540-855-7041

[WWW.GENUINBIOTECH.COM](http://WWW.GENUINBIOTECH.COM)



Genotype	Ct Value
Wild-Type	23.42
Knock-Down	26.41
$\Delta Ct (Ct_{KD} - Ct_{WT})$	2.99
% mRNA Reduction	↓ 87%

RT-qPCR analysis. HeLa cells were infected with APP-specific shRNA lentiviral particles, total RNA was extracted from wild-type and knockdown cells, RT-qPCR was performed using gene-specific primers.  $\Delta Ct (Ct_{KD} - Ct_{WT})$  was used to calculate mRNA reduction (%) between wild-type and knockdown cells using the following formula:  $(1 - 1/2^{\Delta Ct}) \times 100\%$ .



Western blotting analysis. APP protein expression in wild-type (WT) and shRNA knockdown (KD) HeLa cells was detected using Western blotting.  $\beta$ -Tubulin  $\alpha$  served as a loading control. The blots were incubated with primary antibodies (Cat#69660, 1:5,000) against APP and  $\beta$ -Tubulin, respectively, followed by incubating with HRP-conjugated goat anti-rabbit secondary

## **Human APP Knockdown Cell Line (WB-Validated)**

PAGE 3

antibody (Cat#201, 1:20,000). Images were developed using FeQ™ ECL Substrate Kit (Cat#226).

---

### **SUPPORT**

SUPPORT@GENUINBIOTECH.COM  
TEL: +1-540-855-7041

### **ORDERS**

SALES@GENUINBIOTECH.COM  
FAX: +1-540-855-7041

**WWW.GENUINBIOTECH.COM**