

# Anti-CD206 Mouse Monoclonal Antibody, APC Conjugated



**Catalog #: F0104-APC**

## Aliases

MRC1; Mannose Receptor C-Type 1; CLEC13DL; CLEC13D; BA541I19.1; MRC1L1; CD206; Macrophage Mannose Receptor 1-Like Protein 1; C-Type Lectin Domain Family 13 Member D; Mannose Receptor, C Type 1-Like 1; Macrophage Mannose Receptor 1; Human Mannose Receptor; MMR; HMR; C-Type Lectin Domain Family 13 Member D-Like; Macrophage Mannose Receptor; Mannose Receptor, C Type 1; CD206 Antigen

## Background

Gene Name: MRC1

NCBI Gene Entry: [4360](#)

UniProt Entry: [P22897](#)

## Application Information

Clonality: Mouse monoclonal antibody

Clone ID: 24GB14910

Species Reactivity: Human

Applications Tested: Flow Cytometry (FCM)

Conjugation: APC

## Immunogen

The immunogen information is proprietary.

## Isotype

Mouse IgG1,  $\kappa$

## Storage Buffer

Supplied in PBS (pH 7.2-7.4) containing 0.2% BSA and 0.1% Proclin 300.

## Storage

Store at 4 °C and protected from prolonged exposure to light.

## Recommended Dilutions

5  $\mu$ L/Tests

**Note:** This product is for research use only.

---

### SUPPORT

SUPPORT@GENUINBIOTECH.COM  
TEL: +1-540-855-7041

### ORDERS

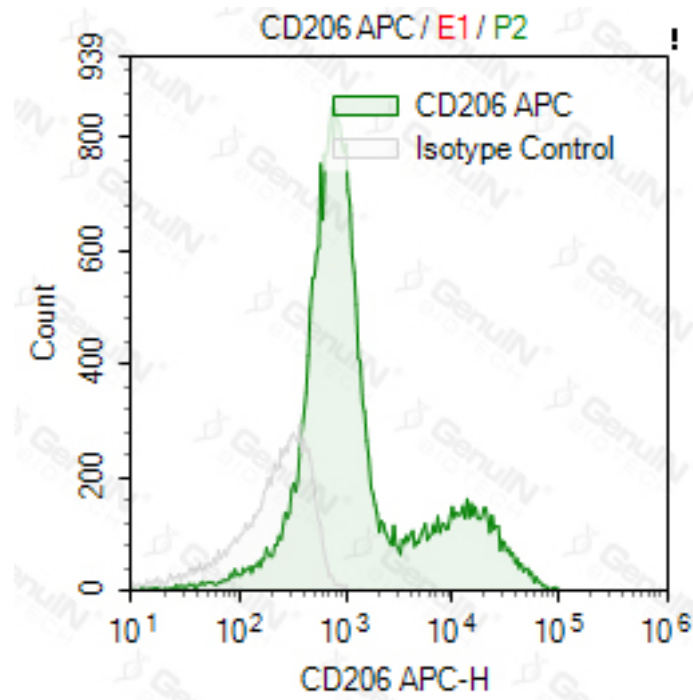
SALES@GENUINBIOTECH.COM  
FAX: +1-540-855-7041

[WWW.GENUINBIOTECH.COM](http://WWW.GENUINBIOTECH.COM)

# Anti-CD206 Mouse Monoclonal Antibody, APC Conjugated

PAGE 2

## Validation Data



### SUPPORT

SUPPORT@GENUINBIOTECH.COM  
TEL: +1-540-855-7041

### ORDERS

SALES@GENUINBIOTECH.COM  
FAX: +1-540-855-7041

[WWW.GENUINBIOTECH.COM](http://WWW.GENUINBIOTECH.COM)