

Anti-CD2 Mouse Monoclonal Antibody, PE-Cy5 Conjugated



Catalog #: F0146-PC5

Aliases

CD2; CD2 Molecule; SRBC; CD2 Antigen (P50), Sheep Red Blood Cell Receptor; T-Cell Surface Antigen T11/Leu-5; T-Cell Surface Antigen CD2; Erythrocyte Receptor; Rosette Receptor; LFA-3 Receptor; LFA-2; Lymphocyte-Function Antigen-2; CD2 Antigen; T11

Background

Gene Name: CD2

NCBI Gene Entry: [914](#)

UniProt Entry: [P06729](#)

Application Information

Clonality: Mouse monoclonal antibody

Clone ID: 24GB14400

Species Reactivity: Human, baboon, chimpanzee, cynomolgus, capuchin monkey, rhesus, pigtailed Macaque, pig

Applications Tested: Flow Cytometry (FCM)

Conjugation: PE-Cy5

Immunogen

The immunogen information is proprietary.

Isotype

Mouse IgG1, κ

Storage Buffer

Supplied in PBS (pH 7.2-7.4) containing 0.2% BSA and 0.1% Proclin 300.

Storage

Store at 4 °C and protected from prolonged exposure to light.

Recommended Dilutions

5 μ L/Tests

Note: This product is for research use only.

Validation Data

SUPPORT

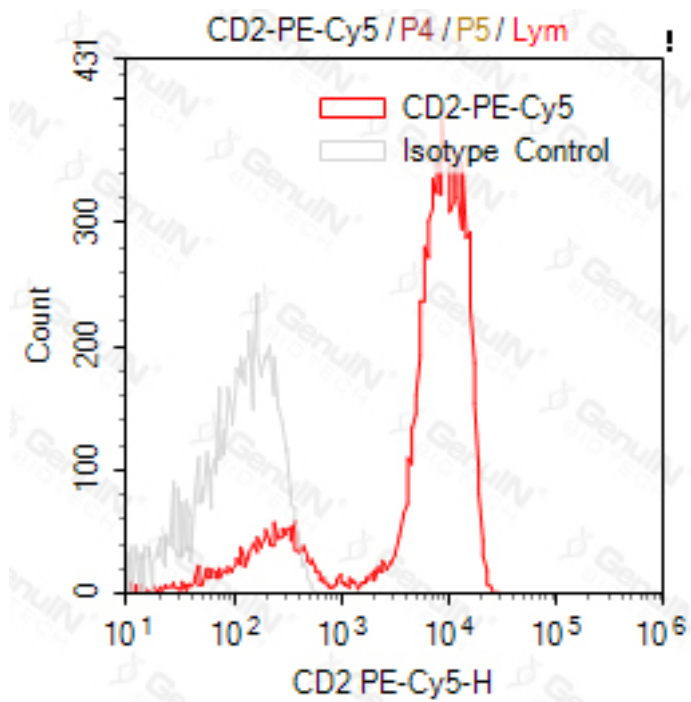
SUPPORT@GENUINBIOTECH.COM
TEL: +1-540-855-7041

ORDERS

SALES@GENUINBIOTECH.COM
FAX: +1-540-855-7041

WWW.GENUINBIOTECH.COM

Anti-CD2 Mouse Monoclonal Antibody, PE-Cy5 Conjugated



SUPPORT

SUPPORT@GENUINBIOTECH.COM
TEL: +1-540-855-7041

ORDERS

SALES@GENUINBIOTECH.COM
FAX: +1-540-855-7041

WWW.GENUINBIOTECH.COM