

Anti-CD161 Mouse Monoclonal Antibody, FITC Conjugated



Catalog #: F0324-FITC

Aliases

KLRB1; Killer Cell Lectin Like Receptor B1; NKR-P1A; CLEC5B; Natural Killer Cell Surface Protein P1A; HNKRP1A; NKR-P1; CD161; Killer Cell Lectin-Like Receptor Subfamily B, Member 1; Killer Cell Lectin-Like Receptor Subfamily B Member 1; C-Type Lectin Domain Family 5 Member B; NKRP1A; NKR; CD161 Antigen; HNKRP1a

Background

Gene Name: KLRB1

NCBI Gene Entry: [3820](#)

UniProt Entry: [Q12918](#)

Application Information

Clonality: Mouse monoclonal antibody

Clone ID: 24GB14885

Species Reactivity: Human, african green, baboon, cynomolgus, rhesus

Applications Tested: Flow Cytometry (FCM)

Conjugation: FITC

Immunogen

The immunogen information is proprietary.

Isotype

Mouse IgG1, κ

Storage Buffer

Supplied in PBS (pH 7.2-7.4) containing 0.2% BSA and 0.1% Proclin 300.

Storage

Store at 4 °C and protected from prolonged exposure to light.

Recommended Dilutions

5 μ L/Tests

Note: This product is for research use only.

Validation Data

SUPPORT

SUPPORT@GENUINBIOTECH.COM
TEL: +1-540-855-7041

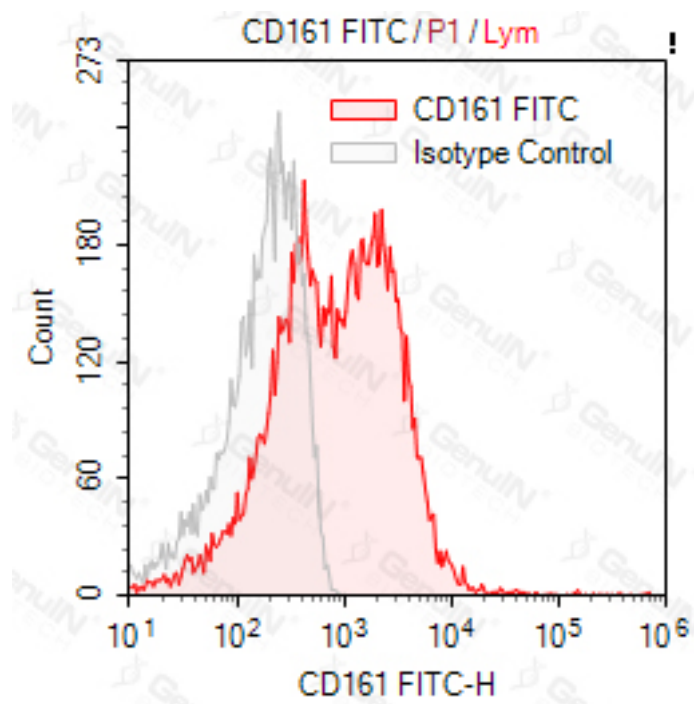
ORDERS

SALES@GENUINBIOTECH.COM
FAX: +1-540-855-7041

WWW.GENUINBIOTECH.COM

Anti-CD161 Mouse Monoclonal Antibody, FITC Conjugated

PAGE 2



SUPPORT

SUPPORT@GENUINBIOTECH.COM
TEL: +1-540-855-7041

ORDERS

SALES@GENUINBIOTECH.COM
FAX: +1-540-855-7041

WWW.GENUINBIOTECH.COM