

# Anti-CD69 Mouse Monoclonal Antibody, PE Conjugated



**Catalog #: F0556-PE**

## Aliases

CD69; CD69 Molecule; CLEC2C; CD69 Antigen (P60, Early T-Cell Activation Antigen); Early T-Cell Activation Antigen P60; Leukocyte Surface Antigen Leu-23; Early Activation Antigen CD69; BL-AC/P26; GP32/28; MLR-3; AIM; EA1; C-Type Lectin Domain Family 2, Member C; Activation Inducer Molecule (AIM/CD69); C-Type Lectin Domain Family 2 Member C; Early Lymphocyte Activation Antigen; Activation Inducer Molecule; CD69 Antigen

## Background

Gene Name: CD69

NCBI Gene Entry: [969](#)

UniProt Entry: [Q07108](#)

## Application Information

Clonality: Mouse monoclonal antibody

Clone ID: 24GB14750

Species Reactivity: Human, african green, baboon, chimpanzee, cynomolgus, capuchin monkey, rhesus

Applications Tested: Flow Cytometry (FCM)

Conjugation: PE

## Immunogen

The immunogen information is proprietary.

## Isotype

Mouse IgG1,  $\kappa$

## Storage Buffer

Supplied in PBS (pH 7.2-7.4) containing 0.2% BSA and 0.1% Proclin 300.

## Storage

Store at 4 °C and protected from prolonged exposure to light.

## Recommended Dilutions

5  $\mu$ L/Tests

---

### SUPPORT

SUPPORT@GENUINBIOTECH.COM  
TEL: +1-540-855-7041

### ORDERS

SALES@GENUINBIOTECH.COM  
FAX: +1-540-855-7041

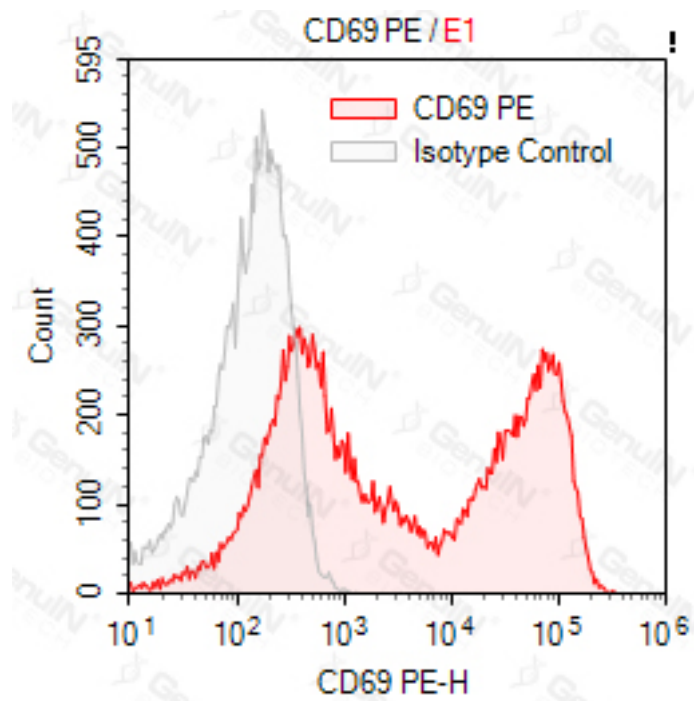
[WWW.GENUINBIOTECH.COM](http://WWW.GENUINBIOTECH.COM)

# Anti-CD69 Mouse Monoclonal Antibody, PE Conjugated

PAGE 2

**Note:** This product is for research use only.

## Validation Data



### SUPPORT

SUPPORT@GENUINBIOTECH.COM  
TEL: +1-540-855-7041

### ORDERS

SALES@GENUINBIOTECH.COM  
FAX: +1-540-855-7041

[WWW.GENUINBIOTECH.COM](http://WWW.GENUINBIOTECH.COM)