

# Anti-CD107a Mouse Monoclonal Antibody, PE Conjugated



**Catalog #: F0573-PE**

## Aliases

LAMP1; Lysosomal Associated Membrane Protein 1; CD107a; Lysosome-Associated Membrane Glycoprotein 1; Lysosome-Associated Membrane Protein 1; CD107 Antigen-Like Family Member A; Lysosomal-Associated Membrane Protein 1; CD107a Antigen; LGP120; LAMP-1; LAMPA

## Background

Gene Name: LAMP1

NCBI Gene Entry: [3916](#)

UniProt Entry: [P11279](#)

## Application Information

Clonality: Mouse monoclonal antibody

Clone ID: 24GB15100

Species Reactivity: Human, african green, baboon, chimpanzee, cynomolgus, capuchin monkey, rhesus

Applications Tested: Flow Cytometry (FCM)

Conjugation: PE

## Immunogen

The immunogen information is proprietary.

## Isotype

Mouse IgG1,  $\kappa$

## Storage Buffer

Supplied in PBS (pH 7.2-7.4) containing 0.2% BSA and 0.1% Proclin 300.

## Storage

Store at 4 °C and protected from prolonged exposure to light.

## Recommended Dilutions

5  $\mu$ L/Tests

**Note:** This product is for research use only.

## Validation Data

---

### SUPPORT

SUPPORT@GENUINBIOTECH.COM  
TEL: +1-540-855-7041

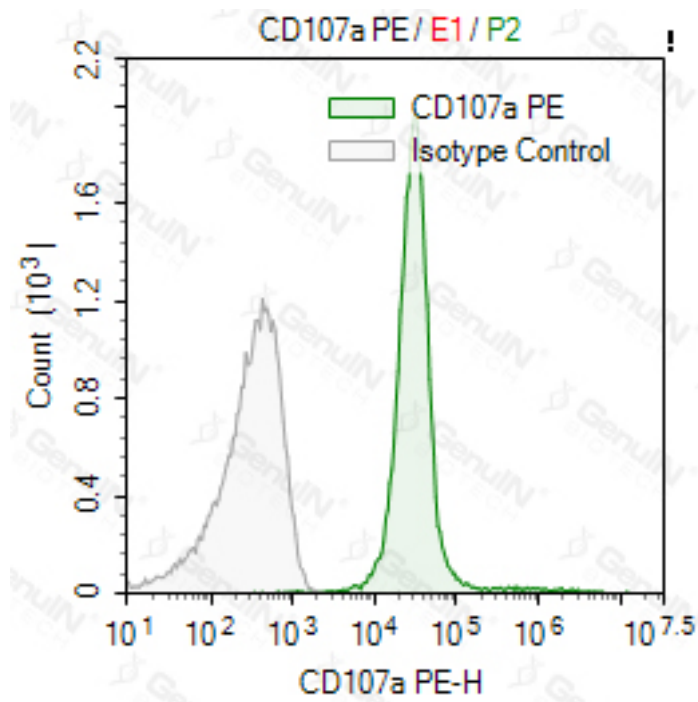
### ORDERS

SALES@GENUINBIOTECH.COM  
FAX: +1-540-855-7041

[WWW.GENUINBIOTECH.COM](http://WWW.GENUINBIOTECH.COM)

## Anti-CD107a Mouse Monoclonal Antibody, PE Conjugated

PAGE 2



### SUPPORT

SUPPORT@GENUINBIOTECH.COM  
TEL: +1-540-855-7041

### ORDERS

SALES@GENUINBIOTECH.COM  
FAX: +1-540-855-7041

[WWW.GENUINBIOTECH.COM](http://WWW.GENUINBIOTECH.COM)