

Anti-CD152 Mouse Monoclonal Antibody, PE Conjugated



Catalog #: F0586-PE

Aliases

CTLA4; Cytotoxic T-Lymphocyte Associated Protein 4; CTLA-4; CD152; GSE; CD; Insulin-Dependent Diabetes Mellitus 12; Cytotoxic T-Lymphocyte Protein 4; Gluten-Sensitive Enteropathy; Celiac Disease 3; CELIAC3; IDDM12; Ligand And Transmembrane Spliced Cytotoxic T Lymphocyte Associated Antigen 4; Cytotoxic T Lymphocyte Associated Antigen 4 Short Spliced Form; Cytotoxic T-Lymphocyte-Associated Serine Esterase-4; Cytotoxic T-Lymphocyte-Associated Antigen 4; Celiac Disease; CD152 Antigen; ALPS5; GRD4

Background

Gene Name: CTLA4

NCBI Gene Entry: [1493](#)

UniProt Entry: [P16410](#)

Application Information

Clonality: Mouse monoclonal antibody

Clone ID: 24GB15485

Species Reactivity: Human

Applications Tested: Flow Cytometry (FCM)

Conjugation: PE

Immunogen

The immunogen information is proprietary.

Isotype

Mouse IgG1, κ

Storage Buffer

Supplied in PBS (pH 7.2-7.4) containing 0.2% BSA and 0.1% Proclin 300.

Storage

Store at 4 °C and protected from prolonged exposure to light.

Recommended Dilutions

5 μ L/Tests

SUPPORT

SUPPORT@GENUINBIOTECH.COM
TEL: +1-540-855-7041

ORDERS

SALES@GENUINBIOTECH.COM
FAX: +1-540-855-7041

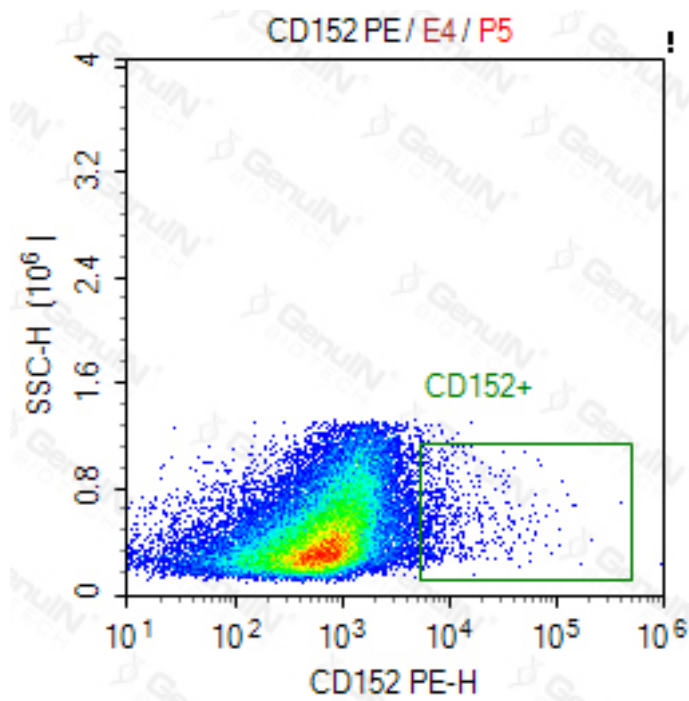
WWW.GENUINBIOTECH.COM

Anti-CD152 Mouse Monoclonal Antibody, PE Conjugated

PAGE 2

Note: This product is for research use only.

Validation Data



SUPPORT

SUPPORT@GENUINBIOTECH.COM
TEL: +1-540-855-7041

ORDERS

SALES@GENUINBIOTECH.COM
FAX: +1-540-855-7041

WWW.GENUINBIOTECH.COM