

Anti-CD206 Mouse Monoclonal Antibody, PE Conjugated



Catalog #: F0594-PE

Aliases

MRC1; Mannose Receptor C-Type 1; CLEC13DL; CLEC13D; BA541I19.1; MRC1L1; CD206; Macrophage Mannose Receptor 1-Like Protein 1; C-Type Lectin Domain Family 13 Member D; Mannose Receptor, C Type 1-Like 1; Macrophage Mannose Receptor 1; Human Mannose Receptor; MMR; HMR; C-Type Lectin Domain Family 13 Member D-Like; Macrophage Mannose Receptor; Mannose Receptor, C Type 1; CD206 Antigen

Background

Gene Name: MRC1

NCBI Gene Entry: [4360](#)

UniProt Entry: [P22897](#)

Application Information

Clonality: Mouse monoclonal antibody

Clone ID: 24GB14910

Species Reactivity: Human

Applications Tested: Flow Cytometry (FCM)

Conjugation: PE

Immunogen

The immunogen information is proprietary.

Isotype

Mouse IgG1, κ

Storage Buffer

Supplied in PBS (pH 7.2-7.4) containing 0.2% BSA and 0.1% Proclin 300.

Storage

Store at 4 °C and protected from prolonged exposure to light.

Recommended Dilutions

5 μ L/Tests

Note: This product is for research use only.

SUPPORT

SUPPORT@GENUINBIOTECH.COM
TEL: +1-540-855-7041

ORDERS

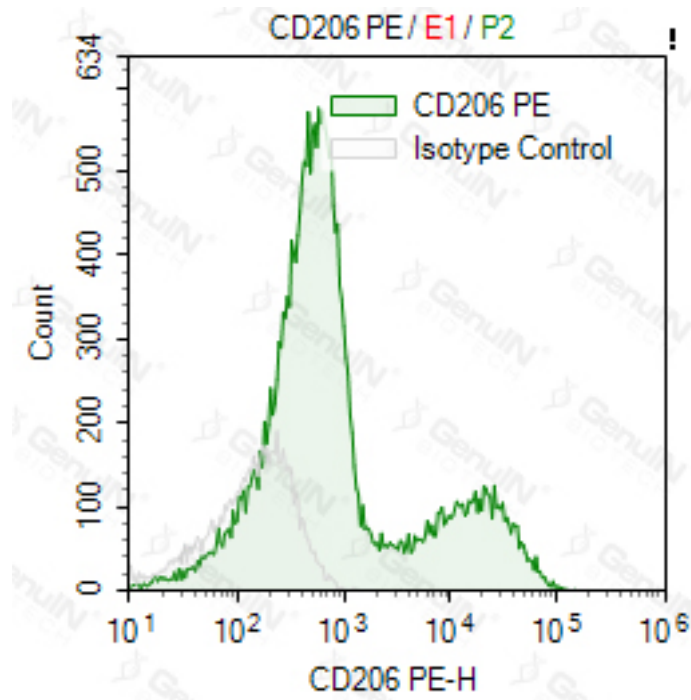
SALES@GENUINBIOTECH.COM
FAX: +1-540-855-7041

WWW.GENUINBIOTECH.COM

Anti-CD206 Mouse Monoclonal Antibody, PE Conjugated

PAGE 2

Validation Data



SUPPORT

SUPPORT@GENUINBIOTECH.COM
TEL: +1-540-855-7041

ORDERS

SALES@GENUINBIOTECH.COM
FAX: +1-540-855-7041

WWW.GENUINBIOTECH.COM