

# Anti-CD307e Mouse Monoclonal Antibody, PE Conjugated



**Catalog #: F0601-PE**

## Aliases

FCRL5; Fc Receptor Like 5; BXMAS1; FCRH5; IRTA2; CD307e; Immune Receptor Translocation-Associated Protein 2; Fc Receptor-Like Protein 5; Fc Receptor Homolog 5; FcR-Like Protein 5; Immunoglobulin Superfamily Receptor Translocation Associated 2 (IRTA2); Fc Receptor-Like 5; CD307e Antigen; PRO820; CD307; FcRL5; FcRH5

## Background

Gene Name: FCRL5

NCBI Gene Entry: [83416](#)

UniProt Entry: [Q96RD9](#)

## Application Information

Clonality: Mouse monoclonal antibody

Clone ID: 24GB14950

Species Reactivity: Human

Applications Tested: Flow Cytometry (FCM)

Conjugation: PE

## Immunogen

The immunogen information is proprietary.

## Isotype

Mouse IgG2a,  $\kappa$

## Storage Buffer

Supplied in PBS (pH 7.2-7.4) containing 0.2% BSA and 0.1% Proclin 300.

## Storage

Store at 4 °C and protected from prolonged exposure to light.

## Recommended Dilutions

5  $\mu$ L/Tests

**Note:** This product is for research use only.

## Validation Data

---

### SUPPORT

SUPPORT@GENUINBIOTECH.COM  
TEL: +1-540-855-7041

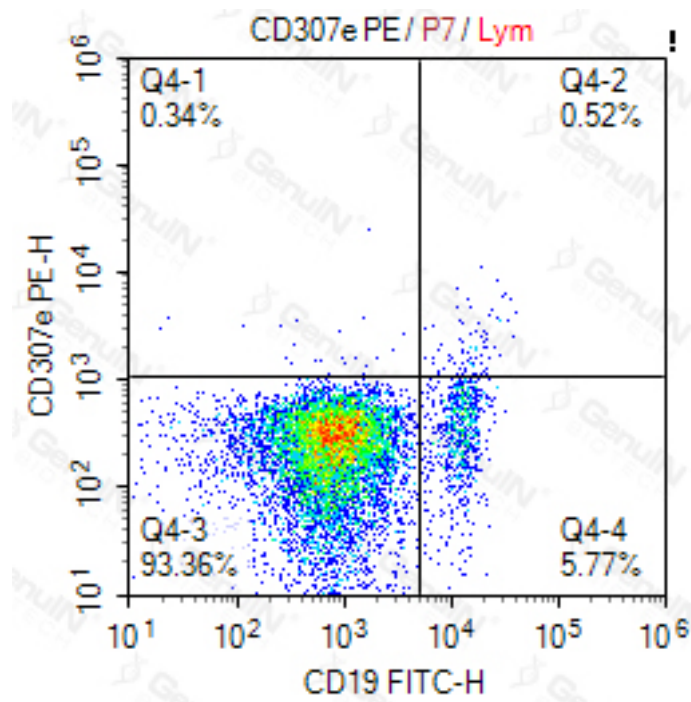
### ORDERS

SALES@GENUINBIOTECH.COM  
FAX: +1-540-855-7041

[WWW.GENUINBIOTECH.COM](http://WWW.GENUINBIOTECH.COM)

## Anti-CD307e Mouse Monoclonal Antibody, PE Conjugated

PAGE 2



### SUPPORT

SUPPORT@GENUINBIOTECH.COM  
TEL: +1-540-855-7041

### ORDERS

SALES@GENUINBIOTECH.COM  
FAX: +1-540-855-7041

[WWW.GENUINBIOTECH.COM](http://WWW.GENUINBIOTECH.COM)