

Anti-HLA-A□B□C Mouse Monoclonal Antibody, PE Conjugated



Catalog #: F0605-PE

Aliases

HLA-A; Major Histocompatibility Complex, Class I, A; HLA Class I Histocompatibility Antigen, A Alpha Chain; HLAA; HLA Class I Histocompatibility Antigen, A-1 Alpha Chain; MHC Class I Antigen HLA-A Heavy Chain; Leukocyte Antigen Class I-A; Human Leukocyte Antigen A

Background

Gene Name: HLA-A

NCBI Gene Entry: 3105

UniProt Entry: P04439

Application Information

Clonality: Mouse monoclonal antibody

Clone ID: 24GB15320

Species Reactivity: Human

Applications Tested: Flow Cytometry (FCM)

Conjugation: PE

Immunogen

The immunogen information is proprietary.

Isotype

Mouse IgG2a, κ

Storage Buffer

Supplied in PBS (pH 7.2-7.4) containing 0.2% BSA and 0.1% Proclin 300.

Storage

Store at 4 °C and protected from prolonged exposure to light.

Recommended Dilutions

5 μL/Tests

Note: This product is for research use only.

Validation Data

SUPPORT

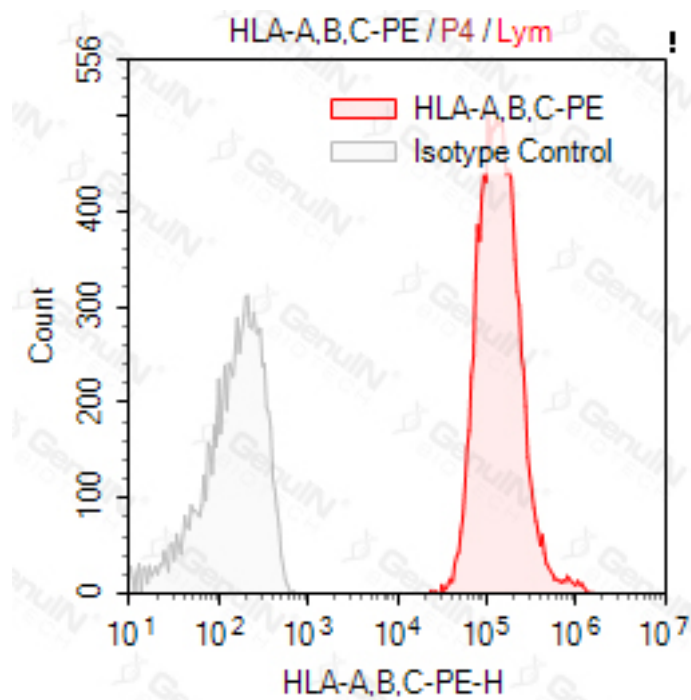
SUPPORT@GENUINBIOTECH.COM
TEL: +1-540-855-7041

ORDERS

SALES@GENUINBIOTECH.COM
FAX:+1-540-855-7041

WWW.GENUINBIOTECH.COM

Anti-HLA-A/B/C Mouse Monoclonal Antibody, PE Conjugated



SUPPORT

SUPPORT@GENUINBIOTECH.COM
TEL: +1-540-855-7041

ORDERS

SALES@GENUINBIOTECH.COM
FAX: +1-540-855-7041

WWW.GENUINBIOTECH.COM