

# Anti-CD40 Rat Monoclonal Antibody, Pacific Blue Conjugated



**Catalog #: F0725-PB**

## Aliases

CD40; CD40 Molecule; Bp50; TNFRSF5; P50; Tumor Necrosis Factor Receptor Superfamily Member 5; CD40 Molecule, TNF Receptor Superfamily Member 5; CD40L Receptor; Tumor Necrosis Factor Receptor Superfamily, Member 5; B Cell Surface Antigen CD40; B-Cell Surface Antigen CD40; B Cell-Associated Molecule; CD40 Antigen; CDW40; CDw40

## Background

Gene Name: CD40

NCBI Gene Entry: [958](#)

UniProt Entry: [P25942](#)

## Application Information

Clonality: Rat monoclonal antibody

Clone ID: 24GB14620

Species Reactivity: Human

Applications Tested: Flow Cytometry (FCM)

Conjugation: Pacific Blue

## Immunogen

The immunogen information is proprietary.

## Isotype

Rat IgG2b

## Storage Buffer

Supplied in PBS (pH 7.2-7.4) containing 0.2% BSA and 0.1% Proclin 300.

## Storage

Store at 4 °C and protected from prolonged exposure to light.

## Recommended Dilutions

5 µL/Tests

**Note:** This product is for research use only.

## Validation Data

---

### SUPPORT

SUPPORT@GENUINBIOTECH.COM  
TEL: +1-540-855-7041

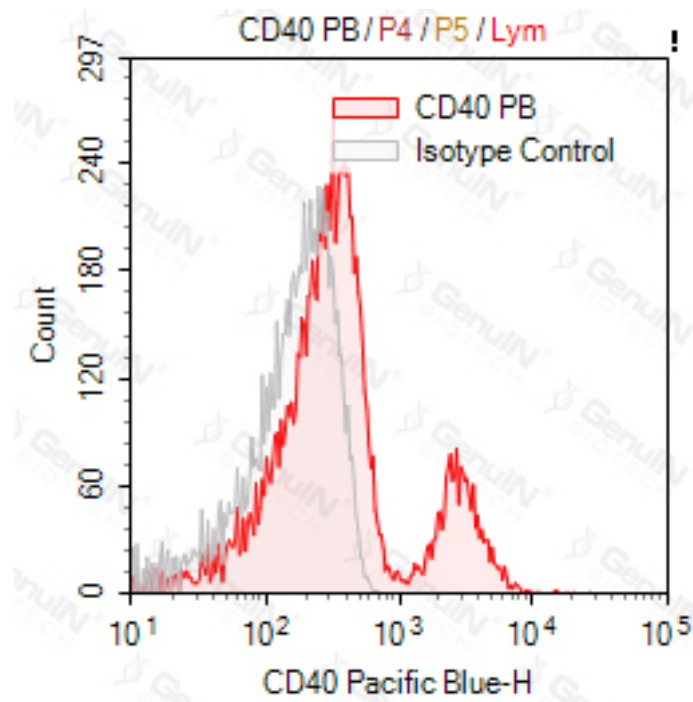
### ORDERS

SALES@GENUINBIOTECH.COM  
FAX: +1-540-855-7041

[WWW.GENUINBIOTECH.COM](http://WWW.GENUINBIOTECH.COM)

## Anti-CD40 Rat Monoclonal Antibody, Pacific Blue Conjugated

PAGE 2



### SUPPORT

SUPPORT@GENUINBIOTECH.COM  
TEL: +1-540-855-7041

### ORDERS

SALES@GENUINBIOTECH.COM  
FAX: +1-540-855-7041

[WWW.GENUINBIOTECH.COM](http://WWW.GENUINBIOTECH.COM)