

Anti-CD107b Mouse Monoclonal Antibody, Pacific Blue Conjugated



Catalog #: F0738-PB

Aliases

LAMP2; Lysosomal Associated Membrane Protein 2; CD107b; Lysosome-Associated Membrane Glycoprotein 2; CD107 Antigen-Like Family Member B; LAMP-2; LGP-96; Lysosomal-Associated Membrane Protein 2; Lysosome-Associated Membrane Protein 2; CD107b Antigen; LGP110; LAMPB; DND

Background

Gene Name: LAMP2

NCBI Gene Entry: [3920](#)

UniProt Entry: [P13473](#)

Application Information

Clonality: Mouse monoclonal antibody

Clone ID: 24GB15105

Species Reactivity: Human

Applications Tested: Flow Cytometry (FCM)

Conjugation: Pacific Blue

Immunogen

The immunogen information is proprietary.

Isotype

Mouse IgG1, κ

Storage Buffer

Supplied in PBS (pH 7.2-7.4) containing 0.2% BSA and 0.1% Proclin 300.

Storage

Store at 4 °C and protected from prolonged exposure to light.

Recommended Dilutions

5 μ L/Tests

Note: This product is for research use only.

Validation Data

SUPPORT

SUPPORT@GENUINBIOTECH.COM
TEL: +1-540-855-7041

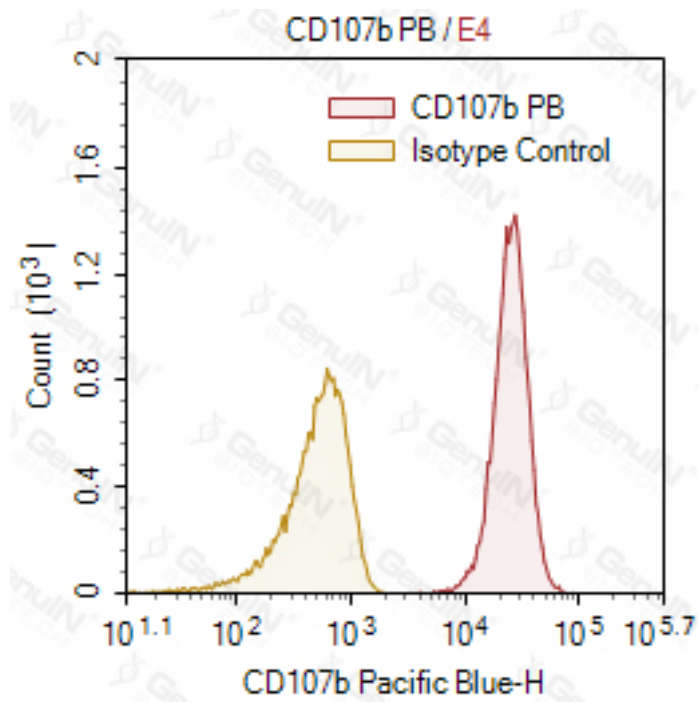
ORDERS

SALES@GENUINBIOTECH.COM
FAX: +1-540-855-7041

WWW.GENUINBIOTECH.COM

Anti-CD107b Mouse Monoclonal Antibody, Pacific Blue Conjugated

PAGE 2



SUPPORT

SUPPORT@GENUINBIOTECH.COM
TEL: +1-540-855-7041

ORDERS

SALES@GENUINBIOTECH.COM
FAX: +1-540-855-7041

WWW.GENUINBIOTECH.COM