

Anti-KLRG1 Syrian Hamster Monoclonal Antibody, FITC-Cy5 Conjugated



Catalog #: F0778-FITC

Aliases

KLRG1; Killer Cell Lectin Like Receptor G1; CLEC15A; MAFA; MAFA-L; 2F1; Killer Cell Lectin-Like Receptor Subfamily G, Member 1; Killer Cell Lectin-Like Receptor Subfamily G Member 1; C-Type Lectin Domain Family 15 Member A; Mast Cell Function-Associated Antigen; ITIM-Containing Receptor MAFA-L; MAFA-Like Receptor; Mast Cell Function-Associated Antigen (ITIM-Containing); C-Type Lectin Domain Family 15, Member A; MAFA-LIKE; MAFA-2F1; MAFAL

Background

Gene Name: KLRG1

NCBI Gene Entry: [10219](#)

UniProt Entry: [Q96E93](#)

Application Information

Clonality: Monoclonal antibody

Clone ID: 24GB15710

Species Reactivity: Human, mouse

Applications Tested: Flow Cytometry (FCM)

Conjugation: FITC-Cy5

Immunogen

The immunogen information is proprietary.

Isotype

Syrian Hamster IgG

Storage Buffer

Supplied in PBS (pH 7.2-7.4) containing 0.2% BSA and 0.1% Proclin 300.

Storage

Store at 4 °C and protected from prolonged exposure to light.

Recommended Dilutions

5 µL/Tests

SUPPORT

SUPPORT@GENUINBIOTECH.COM
TEL: +1-540-855-7041

ORDERS

SALES@GENUINBIOTECH.COM
FAX: +1-540-855-7041

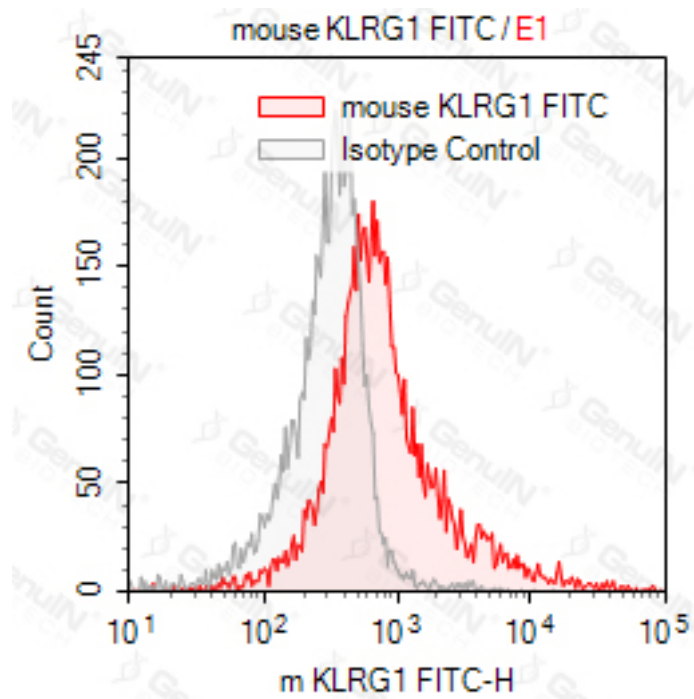
WWW.GENUINBIOTECH.COM

Anti-KLRG1 Syrian Hamster Monoclonal Antibody, FITC-Cy5 Conjugated

PAGE 2

Note: This product is for research use only.

Validation Data



SUPPORT

SUPPORT@GENUINBIOTECH.COM
TEL: +1-540-855-7041

ORDERS

SALES@GENUINBIOTECH.COM
FAX: +1-540-855-7041

WWW.GENUINBIOTECH.COM