

Catalog #: T012

Aliases

HA-tag; HA epitope tag; HA1; HA2; hemagglutinin; Hemagglutinin HA1 chain; Hemagglutinin HA2

Background

The HA-tag is a small, widely used epitope tag derived from the hemagglutinin (HA) glycoprotein of the human influenza virus. The most common HA-tag sequence (YPYDVPDYA, 9 amino acids) corresponds to an immunodominant epitope recognized by monoclonal antibodies. It is typically fused to the N-terminus or C-terminus of recombinant proteins via genetic engineering. Unlike larger fusion tags (e.g., GFP), its compact size minimizes interference with protein structure or function while enabling highly specific detection.

Application Information

Molecular Weight: Recombinant protein dependent

Clonality: Mouse monoclonal antibody

Species Reactivity: Recombinant protein

Applications Tested: Western Blotting (WB), immunocytochemistry (IC), immunoprecipitation (IP)

Immunogen

A synthesized peptide derived from HA-tag

Storage Buffer

Supplied in PBS (pH 7.4) containing 50% glycerol, 0.5% BSA and 0.02% sodium azide.

Storage

Store at -20 °C for one year.

Recommended Dilutions

Western Blotting (WB): 1:1,000-1:5,000

Immunocytochemistry (IC): 1:200-1:1,000

Immunoprecipitation (IP): 1:100-1:200

Note: This product is for research use only.

Validation Data

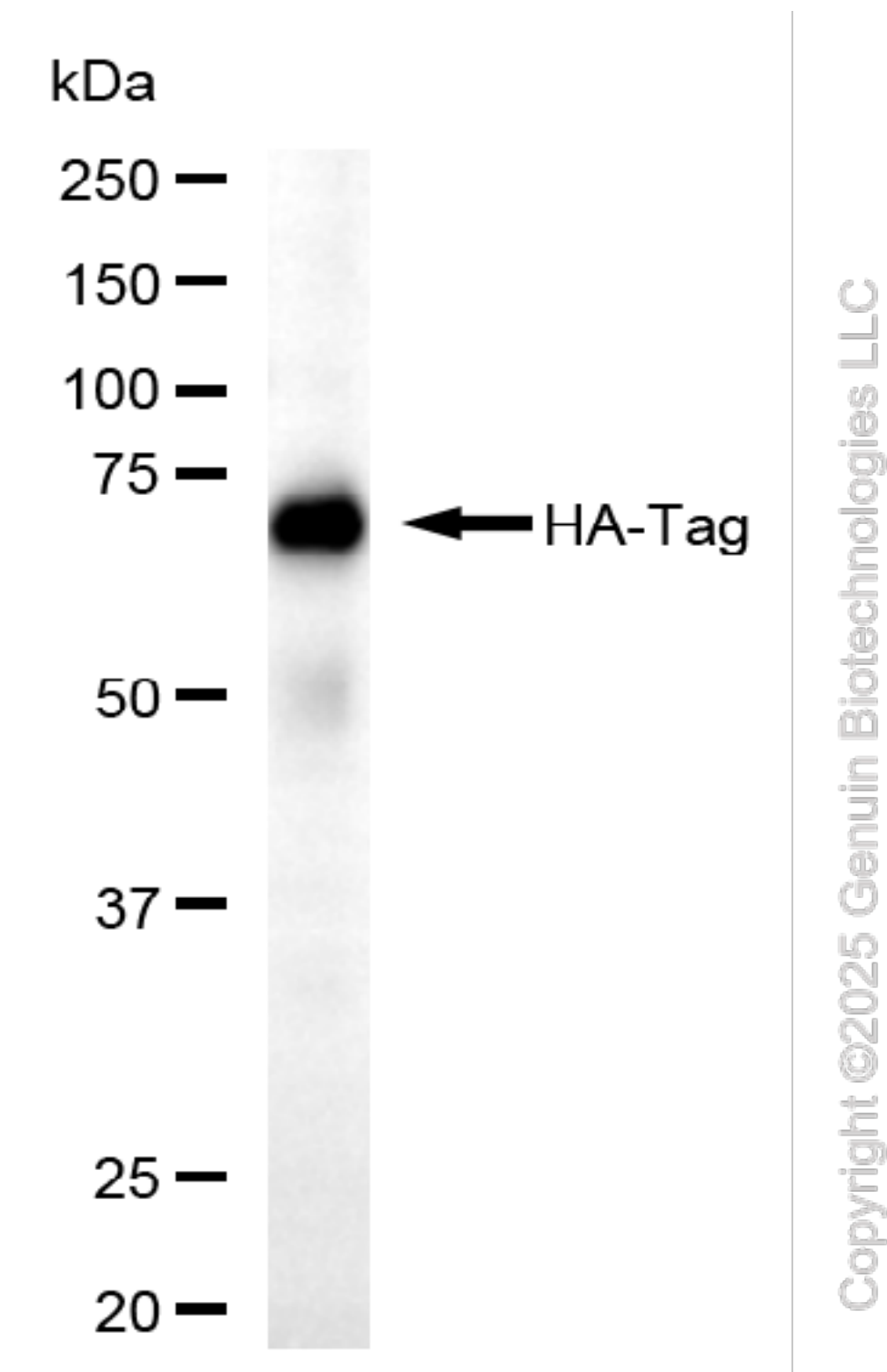
SUPPORT

SUPPORT@GENUINBIOTECH.COM
TEL: +1-540-855-7041

ORDERS

SALES@GENUINBIOTECH.COM
FAX: +1-540-855-7041

WWW.GENUINBIOTECH.COM



Western blotting analysis using anti-HA-Tag antibody (Cat#T012). Recombinant multi-tag protein (5 ng) in E. coli were loaded and separated by SDS-PAGE. The blot was incubated with anti-HA-Tag antibody (Cat#T012, 1:2,500) and HRP-conjugated goat anti-rabbit secondary antibody (Cat#201, 1:20,000) respectively. Image was developed using FeQ™ ECL Substrate Kit (Cat#226).

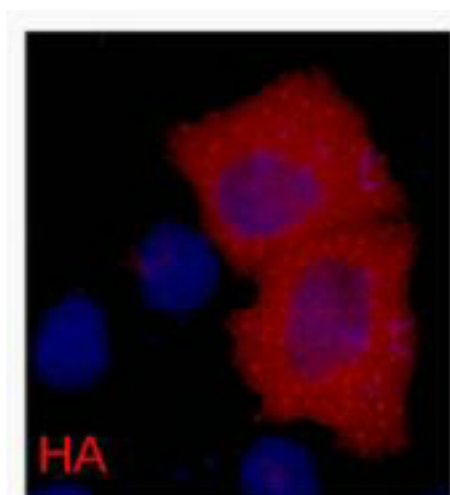
SUPPORT

SUPPORT@GENUINBIOTECH.COM
TEL: +1-540-855-7041

ORDERS

SALES@GENUINBIOTECH.COM
FAX: +1-540-855-7041

WWW.GENUINBIOTECH.COM



Immunocytochemical analysis of 293 cells transfected with a HA-tag protein, 1:2,000 dilution (blue DAPI, red anti-HA).