

Catalog #: T018

Aliases

T7-tag; Major capsid protein 10A; MASMTGGQQMG epitope tag; Minor capsid protein 10B; T7 epitope tag

Background

The T7-tag is a short, specific peptide epitope (MASMTGGQQMG, 11 amino acids) derived from the early region of gene 10 of the T7 bacteriophage. It is genetically engineered as a fusion tag onto the N-terminus or C-terminus of recombinant proteins. Unlike larger affinity tags (e.g., GST), its primary role is epitope tagging – enabling highly specific immunological detection and localization of the tagged protein rather than purification. Its small size minimizes structural or functional interference with the fused protein.

Application Information

Molecular Weight: Recombinant protein dependent

Clonality: Mouse monoclonal antibody

Species Reactivity: Recombinant protein

Applications Tested: Western blotting (WB)

Immunogen

A synthesized peptide derived from T7-tag

Storage Buffer

Supplied in PBS (pH7.3) containing 30% glycerol, and 0.01% sodium azide.

Storage

Store at -20 °C for one year.

Recommended Dilutions

Western Blotting (WB): 1:2,000-5,000

Note: This product is for research use only.

Validation Data

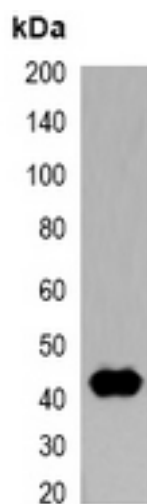
SUPPORT

SUPPORT@GENUINBIOTECH.COM
TEL: +1-540-855-7041

ORDERS

SALES@GENUINBIOTECH.COM
FAX: +1-540-855-7041

WWW.GENUINBIOTECH.COM



Western blotting analysis of over-expressed T7-tagged protein in 293T cell lysate.