

Catalog #: T022

Aliases

6 His epitope tag; Hexa His tag; HHHHHH epitope tag; HHHHHH tag; His tag

Background

The His-Tag (or Polyhistidine tag) is a short amino acid sequence, typically composed of six to ten consecutive histidine residues (e.g., His₆), genetically engineered onto either the N- or C-terminus of a recombinant protein. Its primary function is to facilitate the purification of the tagged protein using immobilized metal affinity chromatography (IMAC). Histidine residues possess an imidazole side chain that exhibits high affinity for certain divalent metal ions, such as nickel (Ni²⁺), cobalt (Co²⁺), copper (Cu²⁺), or zinc (Zn²⁺). This specific interaction allows the His-tagged protein to bind tightly to a chromatography resin charged with one of these metal ions.

Application Information

Molecular Weight: Recombinant protein dependent

Clonality: Rabbit monoclonal antibody

Clone ID: 25GB7020

Species Reactivity: Recombinant protein

Applications Tested: Western blotting (WB)

Immunogen

Recombinant protein of His tag

Isotype

Rabbit IgG

Storage Buffer

Supplied in PBS (pH 7.4) containing 50% glycerol, and 0.05% Proclin 300.

Storage

Store at -20 °C for one year.

Recommended Dilutions

Western Blotting (WB): 1:1,000-1:5,000

SUPPORT

SUPPORT@GENUINBIOTECH.COM
TEL: +1-540-855-7041

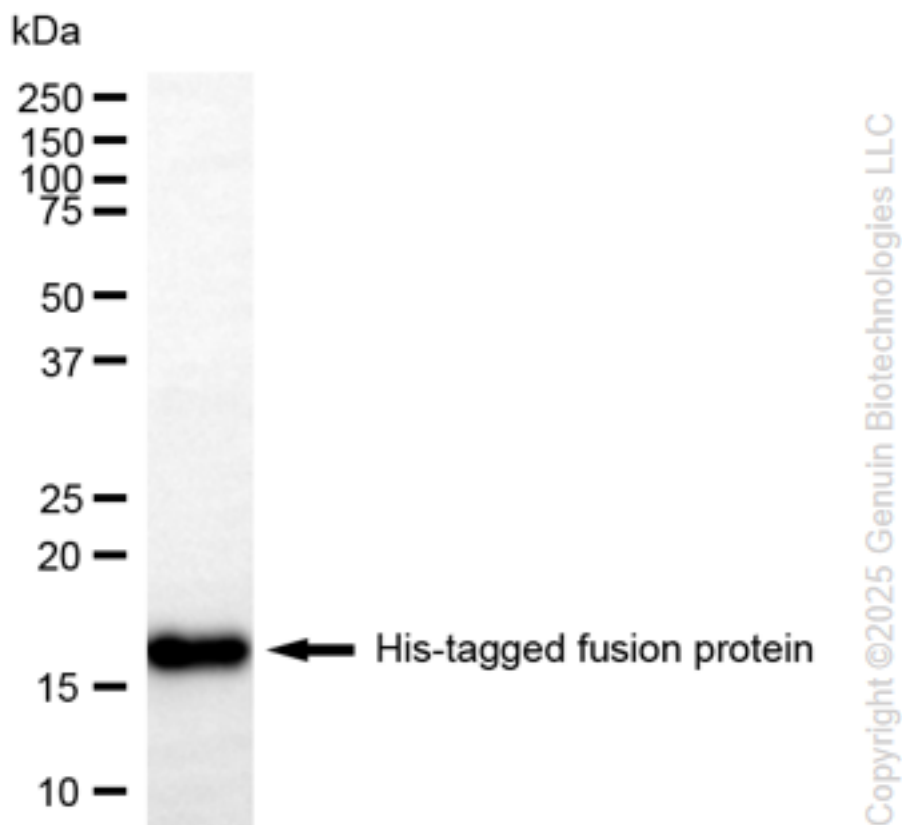
ORDERS

SALES@GENUINBIOTECH.COM
FAX: +1-540-855-7041

WWW.GENUINBIOTECH.COM

Note: This product is for research use only.

Validation Data



Western blotting analysis using anti-His tag antibody (Cat#T022). HHHHHH tagged-fusion protein (0.50 µg) expressed by E. coli were loaded and separated by SDS-PAGE. The blot was incubated with anti-His tag antibody (Cat#T022, 1:5,000) and HRP-conjugated goat anti-rabbit secondary antibody (Cat#201, 1:20,000) respectively. Image was developed using NaQ™ ECL Substrate Kit (Cat#716).