

Catalog #: T026

Aliases

HA-tag; HA epitope tag; HA1; HA2; hemagglutinin; Hemagglutinin HA1 chain; Hemagglutinin HA2

Background

The HA-tag is a small, widely used epitope tag derived from the hemagglutinin (HA) glycoprotein of the human influenza virus. The most common HA-tag sequence (YPYDVPDYA, 9 amino acids) corresponds to an immunodominant epitope recognized by monoclonal antibodies. It is typically fused to the N-terminus or C-terminus of recombinant proteins via genetic engineering. Unlike larger fusion tags (e.g., GFP), its compact size minimizes interference with protein structure or function while enabling highly specific detection.

Application Information

Molecular Weight: Recombinant protein dependent

Clonality: Mouse monoclonal antibody

Clone ID: 25GB7040

Species Reactivity: Recombinant protein

Applications Tested: Western blotting (WB)

Immunogen

Recombinant protein of HA Tag

Isotype

Mouse IgG2b, kappa

Storage Buffer

Supplied in PBS (pH 7.4) containing 50% glycerol, and 0.05% Proclin 300.

Storage

Store at -20 °C for one year.

Recommended Dilutions

Western Blotting (WB): 1:1,000-1:5,000

Note: This product is for research use only.

SUPPORT

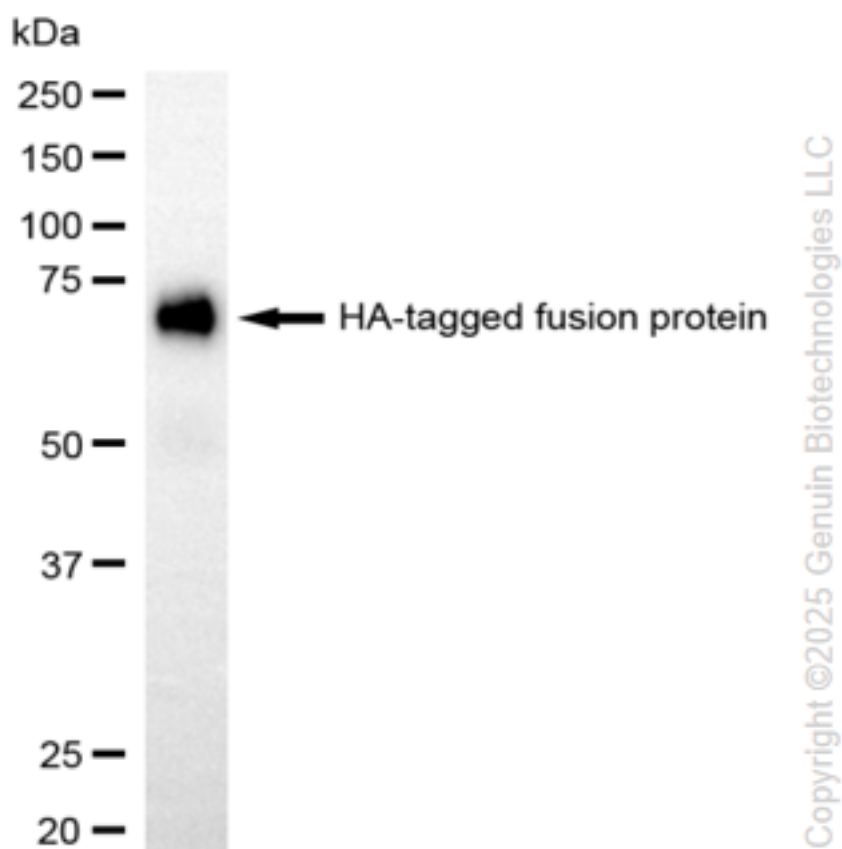
SUPPORT@GENUINBIOTECH.COM
TEL: +1-540-855-7041

ORDERS

SALES@GENUINBIOTECH.COM
FAX: +1-540-855-7041

WWW.GENUINBIOTECH.COM

Validation Data



Western blotting analysis using anti-HA tag antibody (Cat#T026). Recombinant multi-tag protein (5 ng) expressed by E. coli were loaded and separated by SDS-PAGE. The blot was incubated with anti-HA tag antibody (Cat#T026, 1:5,000) and HRP-conjugated goat anti-mouse secondary antibody (Cat#101, 1:20,000) respectively. Image was developed using NaQ™ ECL Substrate Kit (Cat#716).

SUPPORT

SUPPORT@GENUINBIOTECH.COM
TEL: +1-540-855-7041

ORDERS

SALES@GENUINBIOTECH.COM
FAX: +1-540-855-7041

WWW.GENUINBIOTECH.COM