

# Anti-Phospho-BMX (Y40) Rabbit Polyclonal Antibody



**Catalog #: U0155**

## Aliases

Cytoplasmic tyrosine-protein kinase BMX; Bone marrow tyrosine kinase gene in chromosome X protein; Epithelial and endothelial tyrosine kinase; ETK; NTK38

## Background

Gene Name: BMX

NCBI Gene Entry: [660](#)

UniProt Entry: [P51813](#)

## Application Information

Molecular Weight: Predicted, 78 kDa; observed, 78 kDa

Clonality: Rabbit polyclonal antibody

Species Reactivity: Human, mouse, rat, monkey

Applications Tested: Western blotting (WB)

## Immunogen

A synthesized peptide derived from human Phospho-BMX (Y40)

## Isotype

Rabbit IgG

## Storage Buffer

Supplied in PBS (pH 7.3) containing 30% glycerol, and 0.01% sodium azide.

## Storage

Store at -20 °C for one year.

## Recommended Dilutions

Western Blotting (WB): 1:500-1:1,000

**Note:** This product is for research use only.

## Validation Data

---

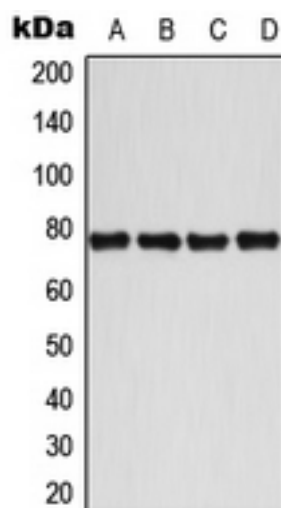
### SUPPORT

SUPPORT@GENUINBIOTECH.COM  
TEL: +1-540-855-7041

### ORDERS

SALES@GENUINBIOTECH.COM  
FAX: +1-540-855-7041

[WWW.GENUINBIOTECH.COM](http://WWW.GENUINBIOTECH.COM)



Western blotting analysis of BMX (Phospho-Y40) expression in MCF7 IL1b-treated (A), Jurkat CD3-treated (B), Raw264.7 IL1b-treated (C), H9C2 IL1b-treated (D) whole cell lysates.