

Anti-Phospho-EPO Receptor (Y426) Rabbit Polyclonal Antibody



Catalog #: U0191

Aliases

Erythropoietin receptor; EPO-R

Background

Gene Name: EPOR

NCBI Gene Entry: [2057](#)

UniProt Entry: [P19235](#)

Application Information

Molecular Weight: Predicted, 55 kDa; observed, 60 kDa

Clonality: Rabbit polyclonal antibody

Species Reactivity: Human, mouse, rat, dog, pig, sheep

Applications Tested: Western blotting (WB)

Immunogen

A synthesized peptide derived from human Phospho-EPO Receptor (Y426)

Isotype

Rabbit IgG

Storage Buffer

Supplied in PBS (pH 7.3) containing 30% glycerol, and 0.01% sodium azide.

Storage

Store at -20 °C for one year.

Recommended Dilutions

Western Blotting (WB): 1:500-1:1,000

Note: This product is for research use only.

Validation Data

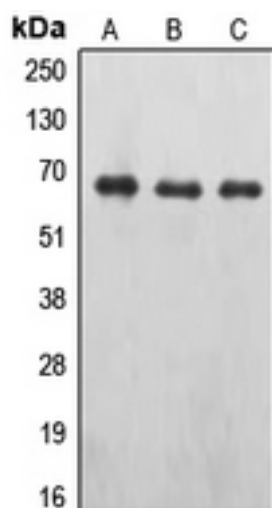
SUPPORT

SUPPORT@GENUINBIOTECH.COM
TEL: +1-540-855-7041

ORDERS

SALES@GENUINBIOTECH.COM
FAX: +1-540-855-7041

WWW.GENUINBIOTECH.COM



Western blotting analysis of EPO Receptor (Phospho-Y426) expression in A498 (A), MCF7 pervanadate-treated (B), NIH3T3 (C) whole cell lysates.