

Anti-Phospho-IGF1 Receptor (Y1165/Y1166) Rabbit Polyclonal Antibody



Catalog #: U0213

Aliases

Insulin-like growth factor 1 receptor; Insulin-like growth factor I receptor; IGF-I receptor; CD221

Background

Gene Name: IGF1R

NCBI Gene Entry: [3480](#)

UniProt Entry: [P08069](#)

Application Information

Molecular Weight: Predicted, 154 kDa; observed, 95, 200 kDa

Clonality: Rabbit polyclonal antibody

Species Reactivity: Human, mouse, rat, bovine, chicken, zebrafish

Applications Tested: Western blotting (WB), immunohistochemistry (IHC)

Immunogen

A synthesized peptide derived from human Phospho-IGF1 Receptor (Y1165/Y1166)

Isotype

Rabbit IgG

Storage Buffer

Supplied in PBS (pH 7.3) containing 30% glycerol, and 0.01% sodium azide.

Storage

Store at -20 °C for one year.

Recommended Dilutions

Western Blotting (WB): 1:500-1:1,000

Immunohistochemistry (IHC): 1:50-1:100

Note: This product is for research use only.

Validation Data

SUPPORT

SUPPORT@GENUINBIOTECH.COM
TEL: +1-540-855-7041

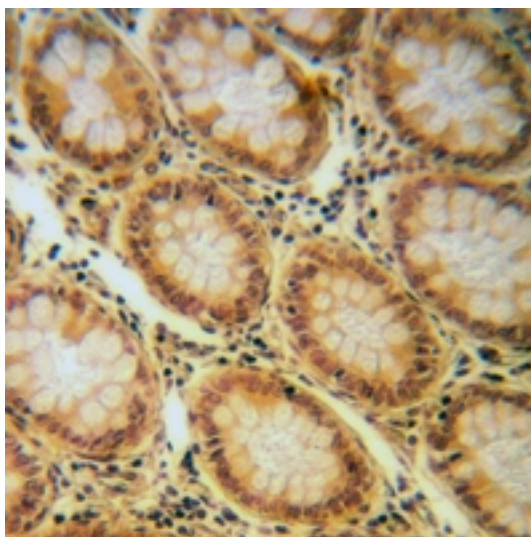
ORDERS

SALES@GENUINBIOTECH.COM
FAX: +1-540-855-7041

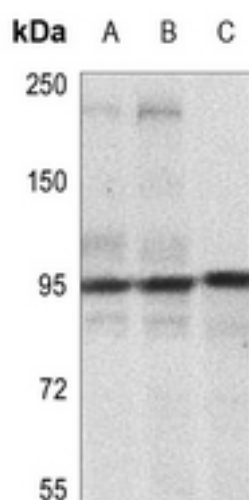
WWW.GENUINBIOTECH.COM

Anti-Phospho-IGF1 Receptor (Y1165/Y1166) Rabbit Polyclonal Antibody

PAGE 2



Immunohistochemical analysis of IGF1 Receptor (Phospho-Y1165/Y1166) staining in human colorectal cancer formalin fixed paraffin embedded tissue section. The section was pre-treated using heat mediated antigen retrieval with sodium citrate buffer (pH 6.0). The section was then incubated with the antibody at room temperature and detected using an HRP conjugated compact polymer system. DAB was used as the chromogen. The section was then counterstained with haematoxylin and mounted with DPX.



Western blotting analysis of IGF1 Receptor (Phospho-Y1165/Y1166) expression in MCF7 (A), MCF7-insulin-15min (B), A2780 (C) whole cell lysates.

SUPPORT

SUPPORT@GENUINBIOTECH.COM
TEL: +1-540-855-7041

ORDERS

SALES@GENUINBIOTECH.COM
FAX: +1-540-855-7041

WWW.GENUINBIOTECH.COM