

Anti-Phospho-Phospholipase D2 (Y169) Rabbit Polyclonal Antibody



Catalog #: U0268

Aliases

Phospholipase D2; PLD 2; hPLD2; Choline phosphatase 2; PLD1C; Phosphatidylcholine-hydrolyzing phospholipase D2

Background

Gene Name: PLD2

NCBI Gene Entry: [5338](#)

UniProt Entry: [O14939](#)

Application Information

Molecular Weight: Predicted, 105 kDa; observed, 105 kDa

Clonality: Rabbit polyclonal antibody

Species Reactivity: Human, mouse, rat, bovine, monkey

Applications Tested: Western blotting (WB), immunohistochemistry (IHC)

Immunogen

A synthesized peptide derived from human Phospho-Phospholipase D2 (Y169)

Isotype

Rabbit IgG

Storage Buffer

Supplied in PBS (pH 7.3) containing 30% glycerol, and 0.01% sodium azide.

Storage

Store at -20 °C for one year.

Recommended Dilutions

Western Blotting (WB): 1:500-1:1,000

Immunohistochemistry (IHC): 1:50-1:100

Note: This product is for research use only.

Validation Data

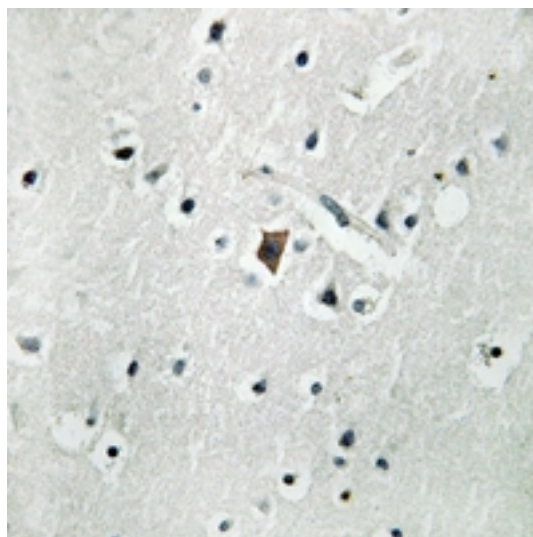
SUPPORT

SUPPORT@GENUINBIOTECH.COM
TEL: +1-540-855-7041

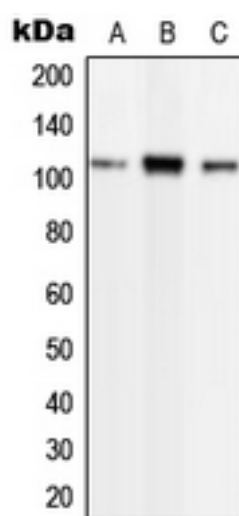
ORDERS

SALES@GENUINBIOTECH.COM
FAX: +1-540-855-7041

WWW.GENUINBIOTECH.COM



Immunohistochemical analysis of Phospholipase D2 (Phospho-Y169) staining in human brain formalin fixed paraffin embedded tissue section. The section was pre-treated using heat mediated antigen retrieval with sodium citrate buffer (pH 6.0). The section was then incubated with the antibody at room temperature and detected using an HRP conjugated compact polymer system. DAB was used as the chromogen. The section was then counterstained with haematoxylin and mounted with DPX.



Western blotting analysis of Phospholipase D2 (Phospho-Y169) expression in HEK293T TNFa-treated (A), NIH3T3 TNFa-treated (B), H9C2 TNFa-treated (C) whole cell lysates.