

Anti-Phospho-CD318 (Y707) Rabbit Polyclonal Antibody



Catalog #: U0331

Aliases

TRASK; CUB domain-containing protein 1; Membrane glycoprotein gp140; Subtractive immunization M plus HEp3-associated 135 kDa protein; SIMA135; Transmembrane and associated with src kinases; CD318

Background

Gene Name: CDCP1

NCBI Gene Entry: [64866](#)

UniProt Entry: [Q9H5V8](#)

Application Information

Molecular Weight: Predicted, 92 kDa; observed, 93 kDa

Clonality: Rabbit polyclonal antibody

Species Reactivity: Human, mouse, rat

Applications Tested: Western blotting (WB)

Immunogen

A synthesized peptide derived from human Phospho-CD318 (Y707)

Isotype

Rabbit IgG

Storage Buffer

Supplied in PBS (pH 7.3) containing 30% glycerol, and 0.01% sodium azide.

Storage

Store at -20 °C for one year.

Recommended Dilutions

Western Blotting (WB): 1:500-1:1,000

Note: This product is for research use only.

Validation Data

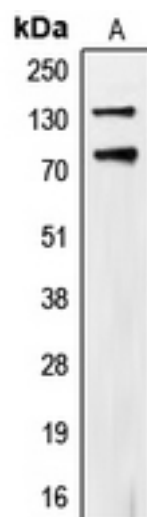
SUPPORT

SUPPORT@GENUINBIOTECH.COM
TEL: +1-540-855-7041

ORDERS

SALES@GENUINBIOTECH.COM
FAX: +1-540-855-7041

WWW.GENUINBIOTECH.COM



Western blotting analysis of CD318 (Phospho-Y707) expression in HeLa UV-treated (A) whole cell lysates.